

Impact of Climate Change on the Most Vulnerable of Older Populations

George M. Tokesky

Hospice by the Sea, Inc.

Boca Raton, Florida

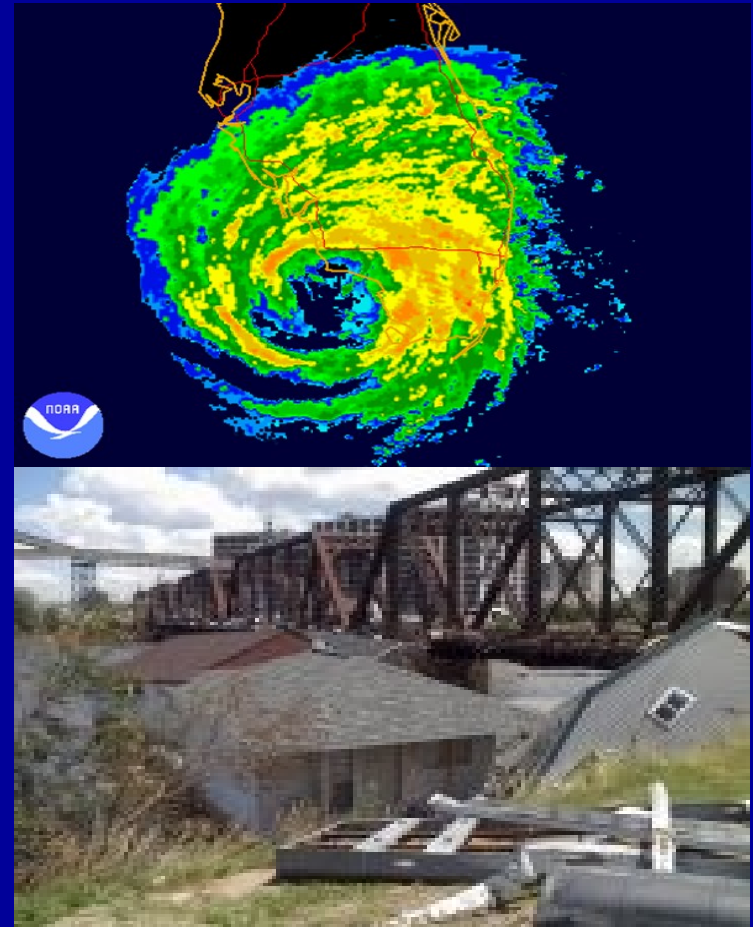
gtokesky@hbts.org

Weather-Related Disasters – On the Front Lines...

- 2004 Hurricane Charley
- 2004 Hurricane Frances
- 2004 Hurricane Ivan
- 2004 Hurricane Jeanne

- 2005 Hurricane Dennis
- 2005 Hurricane Katrina
- 2005 Hurricane Rita
- 2005 Hurricane Wilma

- 2008 Iowa Floods

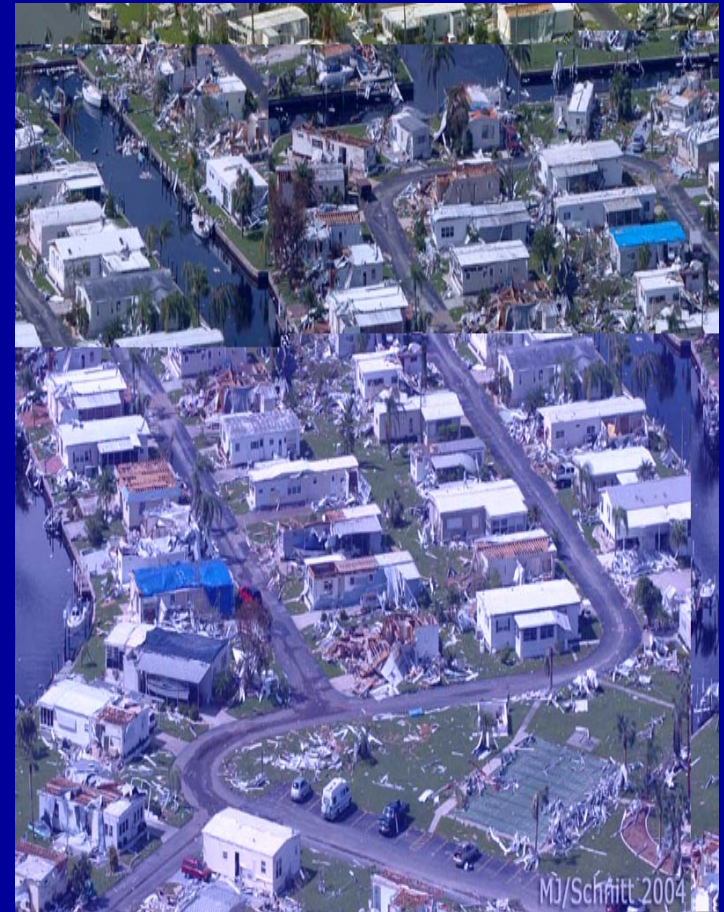


Vulnerable Older Adults – Who Are They?

- Frail and/or Disabled Elderly
- O2 and/or Power Dependent
- Alzheimer's and Related Dementia Patients
- Hospital & Nursing Home Patients
- Require Supportive Services to Remain in the Community
- Economically Disadvantaged
- Socially Isolated
- Dependent on Caregiver(s)

Vulnerable Older Persons – Where Are They?

- Private Residences
- Elder communities & Multi-Family Residences
- Assisted Living Facilities
- Nursing Homes
- Hospitals
- Hospice Units
- Special Needs Shelters (Pre-Disaster)



Vulnerable Older Persons – What Do They Require?

- Food, Water, Medications & Appropriate Shelter
- Healthcare Services
 - Home Health Care
 - DME, O2, Etc.
- Social Services
 - Case Management
 - Meal Programs
 - Transportation Services
- Social and/or Family Support
- Medical Services and Institutional Care



Immediate Impact on Older Populations

- Death & Injury
- Damage to Private Residences
- Extended Power Outages
- Overcrowding of Long Term Care Facilities, Nursing Homes, Hospitals & Hospice Units
- Disruption in Life-Sustaining Services, Access to Medications & Medical Equipment
- Fuel Shortages & Transportation Issues
- Limited Access to Basic Food & Water
- Air Conditioning & Heat Stress
- Bio-Hazards
- Disruption in Communications & Inaccurate Information



Direct Impact to Healthcare System

- Home Health Service Providers
- Medical Transportation Providers
- Long Term Care Facilities
- Nursing Homes
- Hospitals
- Hospice Units
- SpNSs



To Evacuate or Not to Evacuate?

- Risk of Death and/or Injury
- Cost
- Willingness or Unwillingness to Evacuate
- Tracking of Vulnerable Older Persons
- Crime
- Transportation
- Evacuate v. Sheltering In Place



Ivan

Dennis

Frances

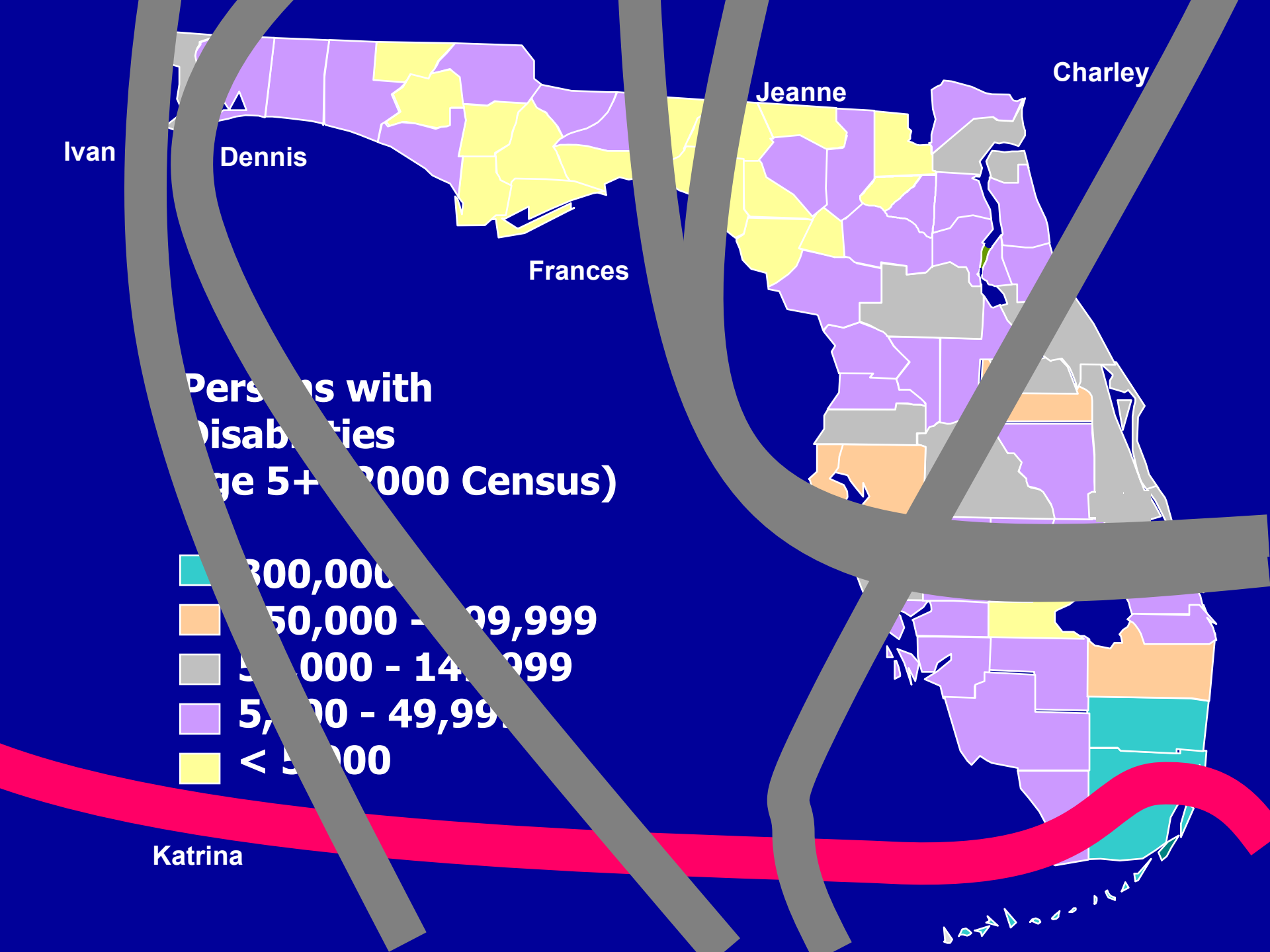
Jeanne

Charley

Persons with Disabilities (Age 5+ - 2000 Census)



Katrina



Lessons Learned & Lessons Applied

- Varied Level of Personal Preparedness
- Willingness to Evacuate and Seek Assistance and/or Shelter
- Lack of Coordinated Effort Between Emergency Responders, Government Agencies, Private Industry and NGOs (Aging Network)
- Inadequate Emergency Policies & Procedures for Healthcare Providers
- Specific Response & Recovery Strategies to Provide Ongoing Care and Shelter Before, During and After a Major Event for Vulnerable Populations
- Back-Up Plan for System Failures
- Targeted Communications Plan

Remember, Even the Best Plan...



Thank You!