



Things to Consider Before Selling Your Home and Moving into a Rental Unit or Assisted Living

**Jim Emmerton, Executive Director
BC Law Institute/ Canadian Centre for Elder Law
May 28, 2014**

Things to Consider ...

Home ??



OR



Things to Consider ...

1. Take a “life inventory”.
2. How much control can you manage?
3. Compare / contrast rental vs. assisted living

1. Take a life inventory

Is your current home affordable?

Net Value: \$100 ——— \$2,000,000 ?

Do you need to access the value ?



1. Take a life inventory

Can you physically manage your home ?



Stairs, levels, lights fixtures ?



Maintenance resources: self/family/contractors?

Major repairs needed ?

1. Take a life inventory

Impact of home on your lifestyle?



Good neighbours ?

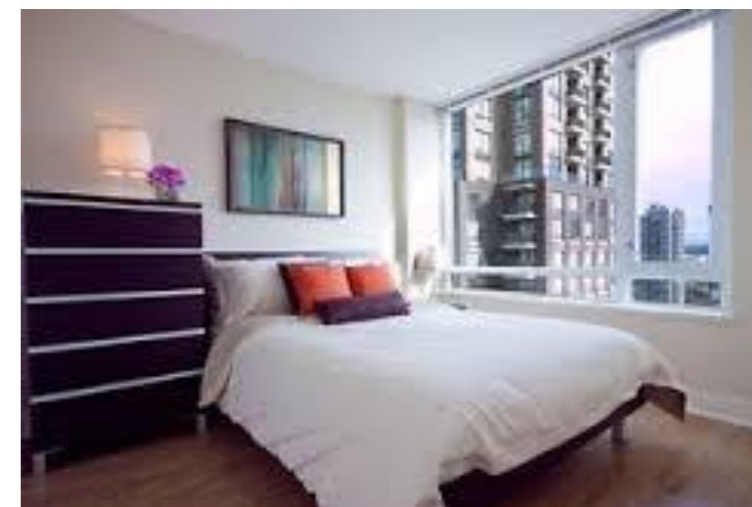
Friends / acquaintances / family ?

Lonely ?



1. Take a life inventory

Are you ready to downsize ?
... much less 'stuff'



1. Take a life inventory

Better to move now or in (5) years ?



2. How much control can you manage ?

Physical: Cooking, cleaning, maintenance ?



2. How much control can you manage ?

**Are you mentally capable -
are changes occurring ?**



2. How much control can you manage ?

Do you have sufficient supports ?



2. How much control can you manage ?

Any abuse concerns ?



3. Rental vs. Assisted Living ?

| | Rental | Assisted Living |
|---------------------------------|------------------------|------------------------|
| Keep important 'stuff' ? | Yes, - extent ? | Less |

3. Rental vs. Assisted Living ?

| | Rental | Assisted Living |
|---------------------------------|------------------------|------------------------|
| <i>Keep important 'stuff' ?</i> | <i>Yes, - extent ?</i> | <i>Less</i> |
| Privacy ? | Yes | Reduced privacy |

3. Rental vs. Assisted Living ?

| | Rental | Assisted Living |
|---------------------------------|------------------------|------------------------|
| <i>Keep important 'stuff' ?</i> | <i>Yes, - extent ?</i> | <i>Less</i> |
| <i>Privacy ?</i> | <i>Yes</i> | <i>Reduced privacy</i> |
| Security of person ? | Self-reliant | 24 hour support |

3. Rental vs. Assisted Living ?

| | Rental | Assisted Living |
|---------------------------------|------------------------|------------------------|
| <i>Keep important 'stuff' ?</i> | <i>Yes, - extent ?</i> | <i>Less</i> |
| <i>Privacy ?</i> | <i>Yes</i> | <i>Reduced privacy</i> |
| <i>Security of person ?</i> | <i>Self-reliant</i> | <i>24 hour support</i> |
| Health monitoring ? | Self-reliant | Better access |

3. Rental vs. Assisted Living ?

| | Rental | Assisted Living |
|---------------------------------|------------------------|---------------------------|
| <i>Keep important 'stuff' ?</i> | <i>Yes, - extent ?</i> | <i>Less</i> |
| <i>Privacy ?</i> | <i>Yes</i> | <i>Reduced privacy</i> |
| <i>Security of person ?</i> | <i>Self-reliant</i> | <i>24 hour support</i> |
| <i>Health monitoring ?</i> | <i>Self-reliant</i> | <i>Better access</i> |
| Feels like home ? | Yes | Less so - for some |

3. Rental vs. Assisted Living ?

| | Rental | Assisted Living |
|---------------------------------|------------------------|---------------------------|
| <i>Keep important 'stuff' ?</i> | <i>Yes, - extent ?</i> | <i>Less</i> |
| <i>Privacy ?</i> | <i>Yes</i> | <i>Reduced privacy</i> |
| <i>Security of person ?</i> | <i>Self-reliant</i> | <i>24 hour support</i> |
| <i>Health monitoring ?</i> | <i>Self-reliant</i> | <i>Better access</i> |
| <i>Feels like home ?</i> | <i>Yes</i> | <i>Less so - for some</i> |
| Personal independence ? | Yes | Less so |

3. Rental vs. Assisted Living ?

| | Rental | Assisted Living |
|---------------------------------|------------------------|---------------------------|
| <i>Keep important 'stuff' ?</i> | <i>Yes, - extent ?</i> | <i>Less</i> |
| <i>Privacy ?</i> | <i>Yes</i> | <i>Reduced privacy</i> |
| <i>Security of person ?</i> | <i>Self-reliant</i> | <i>24 hour support</i> |
| <i>Health monitoring ?</i> | <i>Self-reliant</i> | <i>Better access</i> |
| <i>Feels like home ?</i> | <i>Yes</i> | <i>Less so - for some</i> |
| <i>Personal independence ?</i> | <i>Yes</i> | <i>Less so</i> |
| Campus of care ? | No | Available |

3. Rental vs. Assisted Living ?

| | Rental | Assisted Living |
|---------------------------------|------------------------|---------------------------|
| <i>Keep important 'stuff' ?</i> | <i>Yes, - extent ?</i> | <i>Less</i> |
| <i>Privacy ?</i> | <i>Yes</i> | <i>Reduced privacy</i> |
| <i>Security of person ?</i> | <i>Self-reliant</i> | <i>24 hour support</i> |
| <i>Health monitoring ?</i> | <i>Self-reliant</i> | <i>Better access</i> |
| <i>Feels like home ?</i> | <i>Yes</i> | <i>Less so - for some</i> |
| <i>Personal independence ?</i> | <i>Yes</i> | <i>Less so</i> |
| <i>Campus of care ?</i> | <i>No</i> | <i>Available</i> |
| Meals provided ? | No | Yes |

3. Rental vs. Assisted Living ?

| | Rental | Assisted Living |
|---|------------------------|---------------------------|
| <i>Keep important 'stuff' ?</i> | <i>Yes, - extent ?</i> | <i>Less</i> |
| <i>Privacy ?</i> | <i>Yes</i> | <i>Reduced privacy</i> |
| <i>Security of person ?</i> | <i>Self-reliant</i> | <i>24 hour support</i> |
| <i>Health monitoring ?</i> | <i>Self-reliant</i> | <i>Better access</i> |
| <i>Feels like home ?</i> | <i>Yes</i> | <i>Less so - for some</i> |
| <i>Personal independence ?</i> | <i>Yes</i> | <i>Less so</i> |
| <i>Campus of care ?</i> | <i>No</i> | <i>Available</i> |
| <i>Meals provided ?</i> | <i>No</i> | <i>Yes</i> |
| Housing & services cost controls ? | Rental rules | AL rules |

3. Rental vs. Assisted Living ?

| | Rental | Assisted Living |
|---|------------------------|---------------------------|
| <i>Keep important 'stuff' ?</i> | <i>Yes, - extent ?</i> | <i>Less</i> |
| <i>Privacy ?</i> | <i>Yes</i> | <i>Reduced privacy</i> |
| <i>Security of person ?</i> | <i>Self-reliant</i> | <i>24 hour support</i> |
| <i>Health monitoring ?</i> | <i>Self-reliant</i> | <i>Better access</i> |
| <i>Feels like home ?</i> | <i>Yes</i> | <i>Less so - for some</i> |
| <i>Personal independence ?</i> | <i>Yes</i> | <i>Less so</i> |
| <i>Campus of care ?</i> | <i>No</i> | <i>Available</i> |
| <i>Meals provided ?</i> | <i>No</i> | <i>Yes</i> |
| <i>Housing & services cost controls ?</i> | <i>Rental rules</i> | <i>AL rules</i> |
| Dispute Resolution ? | Tenancy rules | AL rules |

3. Rental vs. Assisted Living ?

| | Rental | Assisted Living |
|---|------------------------|---------------------------|
| <i>Keep important 'stuff' ?</i> | <i>Yes, - extent ?</i> | <i>Less</i> |
| <i>Privacy ?</i> | <i>Yes</i> | <i>Reduced privacy</i> |
| <i>Security of person ?</i> | <i>Self-reliant</i> | <i>24 hour support</i> |
| <i>Health monitoring ?</i> | <i>Self-reliant</i> | <i>Better access</i> |
| <i>Feels like home ?</i> | <i>Yes</i> | <i>Less so - for some</i> |
| <i>Personal independence ?</i> | <i>Yes</i> | <i>Less so</i> |
| <i>Campus of care ?</i> | <i>No</i> | <i>Available</i> |
| <i>Meals provided ?</i> | <i>No</i> | <i>Yes</i> |
| <i>Housing & services cost controls ?</i> | <i>Rental rules</i> | <i>AL rules</i> |
| <i>Dispute Resolution ?</i> | <i>Tenancy rules</i> | <i>AL rules</i> |
| <i>Pets allowed ?</i> | <i>Building rules</i> | <i>Building rules</i> |
| Smoking allowed ? | Yes | Building rules |

3. Rental vs. Assisted Living ?

| | Rental | Assisted Living |
|---|------------------------|---------------------------|
| Keep important 'stuff' ? | Yes, - extent ? | Less |
| Privacy ? | Yes | Reduced privacy |
| Security of person ? | Self-reliant | 24 hour support |
| Health monitoring ? | Self-reliant | Better access |
| Feels like home ? | Yes | Less so - for some |
| Personal independence ? | Yes | Less so |
| Campus of care ? | No | Available |
| Meals provided ? | No | Yes |
| Housing & services cost controls ? | Rental rules | AL rules |
| Dispute Resolution ? | Tenancy rules | AL rules |
| Pets allowed ? | Building rules | Building rules |
| Smoking allowed ? | Yes | Building rules |