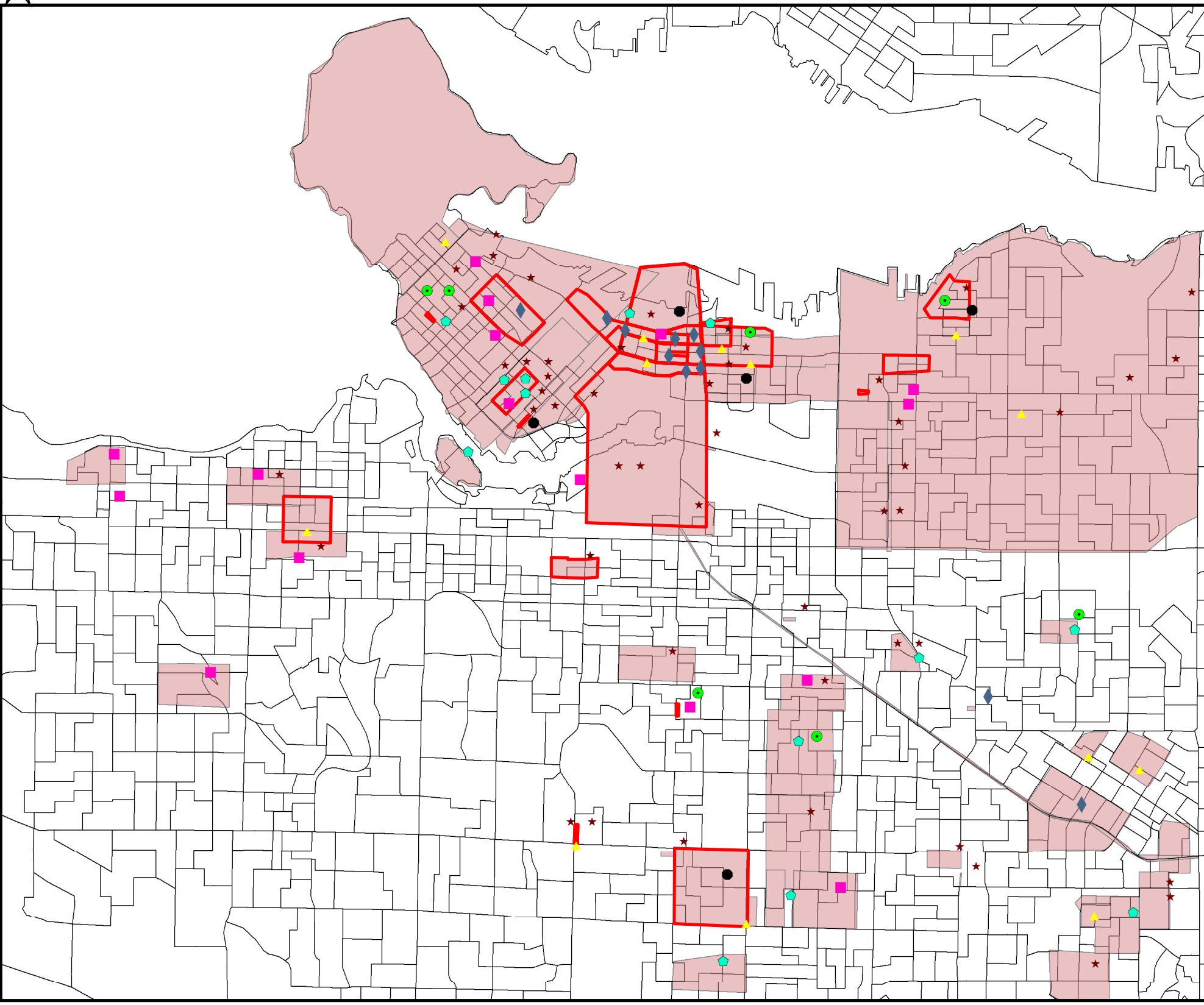


A Snapshot of Spatial Restrictions in Vancouver Criminal Courts



This map depicts the distribution of court ordered area restrictions, "Red Zones", imposed as a condition of bail in Vancouver Criminal Court during the month of January 2011.

Red outlines indicate that the bail order associated with the red zone was breached during the 10 month period between January 2011 and November 2012.

Symbolic labels indicate the type of offense associated with the bail order.

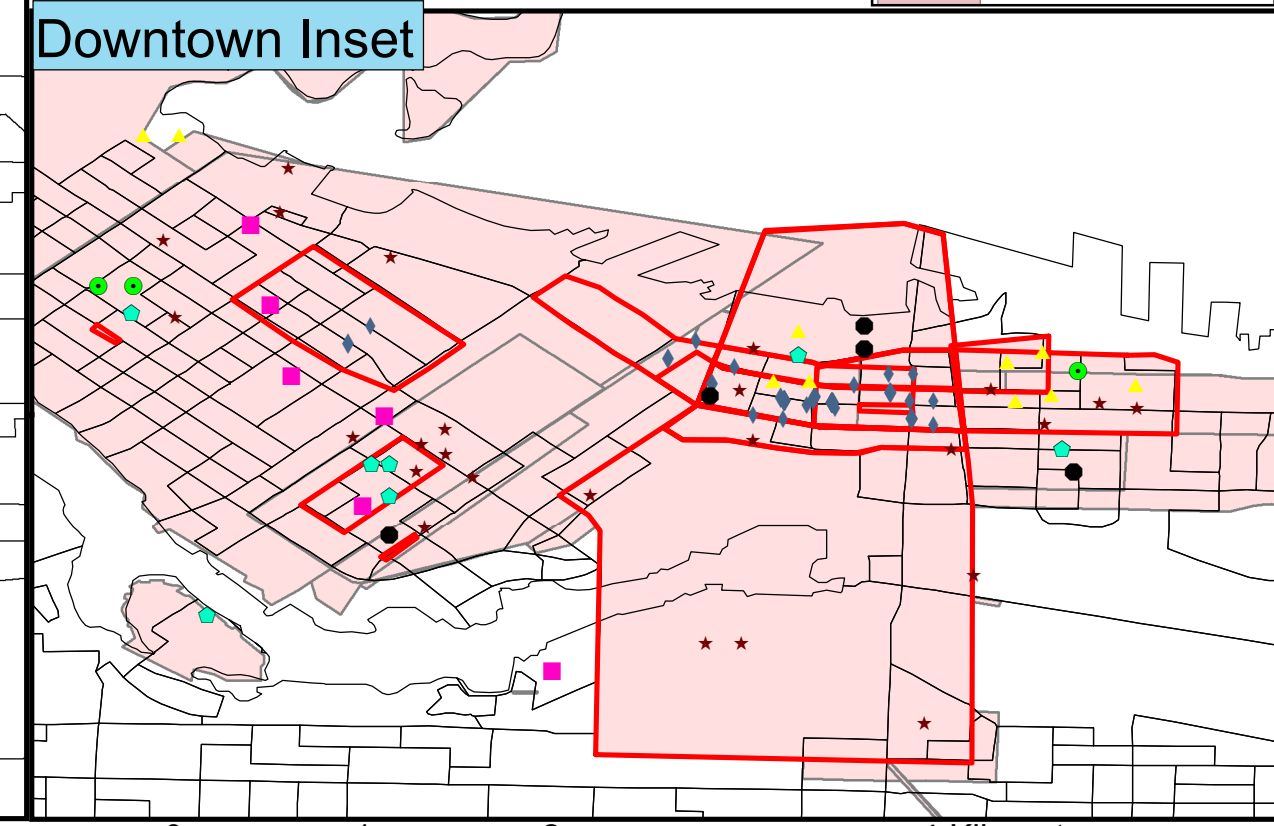
This map shows a concentration of both red zones and breach in the Downtown Eastside neighborhood. In this area 40% of all breached area restrictions can be found. Red zones were more likely to be used for a variety of offenses in this area.

Legend

- ◆ Drug Related
- ★ Assault
- ▲ Theft
- Robbery
- Pos of Weapon
- Harassment
- ◆ Break and Enter

Breach

- 0
- 1
- Red Zone



0 1.25 2.5 5 Kilometers

0 1 2 4 Kilometers

Acknowledgments:
 Shivanand Balaram: Technical Guidance
 Nicholas Blomley: Overall Guidance and Suggestions
 B.C Ministry of Justice: Data

Preparation and Use:
 This map is not intended for planning purposes. While every effort was made to reduce error, this map should be used for understanding general spatial patterns, and not for general purposes

Data Sources:
 Criminal Justice Data: The B.C Ministry of Justice provided a one month sample of all conditions of bail issued during the one month period of January 2011.
 Income Measurements: 2005 Canadian Census Data by Dissemination Areas. Statistics Canada 97-563-XCB2006072.
 Topic Based Tabulations

Map created by: William Damon
 MA Candidate
 Simon Fraser University, Department of Geography
 8888 University Drive, Burnaby, BC, Canada V5A, 1S8
 Date: April 8 2013