

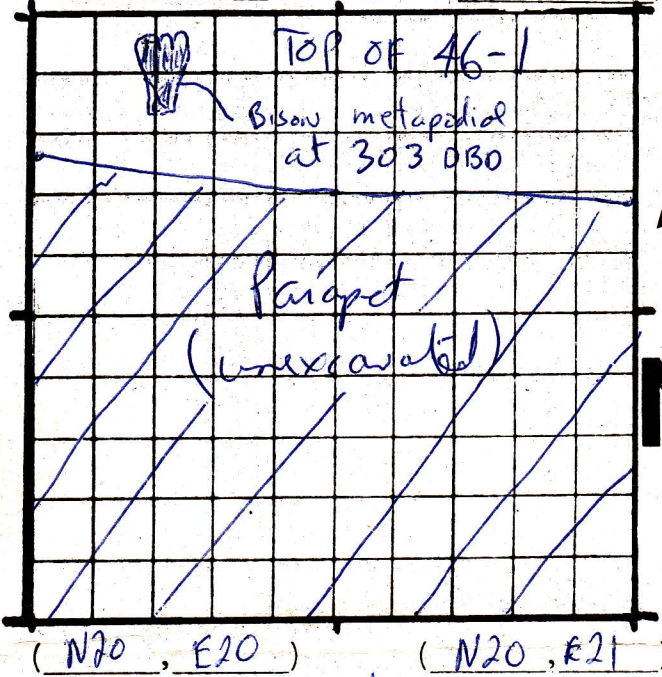
1. Excavation Unit: N20-21, E20-21

2. Level Nos.: 46-1 3. Excavators: Iannone

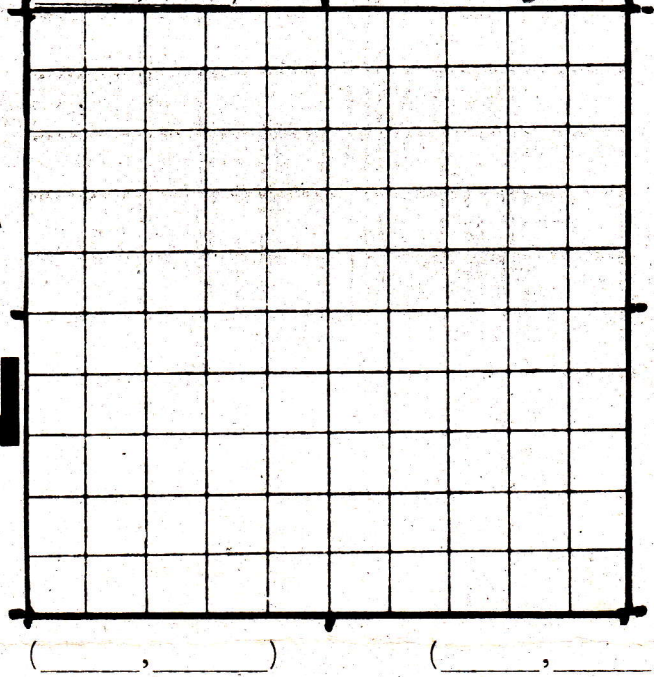
4. Comments: Map #1 relates to large bison metapodial removed prior to excavation of 46-1 because it was in danger of being destroyed.

(N21, E20) MAP #1 (N21, E21)

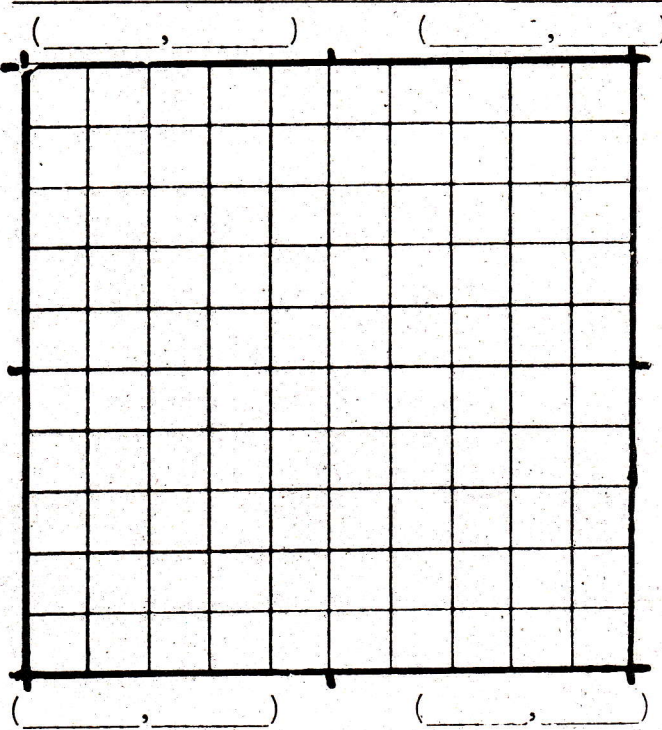
CATALOGUE # 8901
(AMS, DATING # CLC-8)



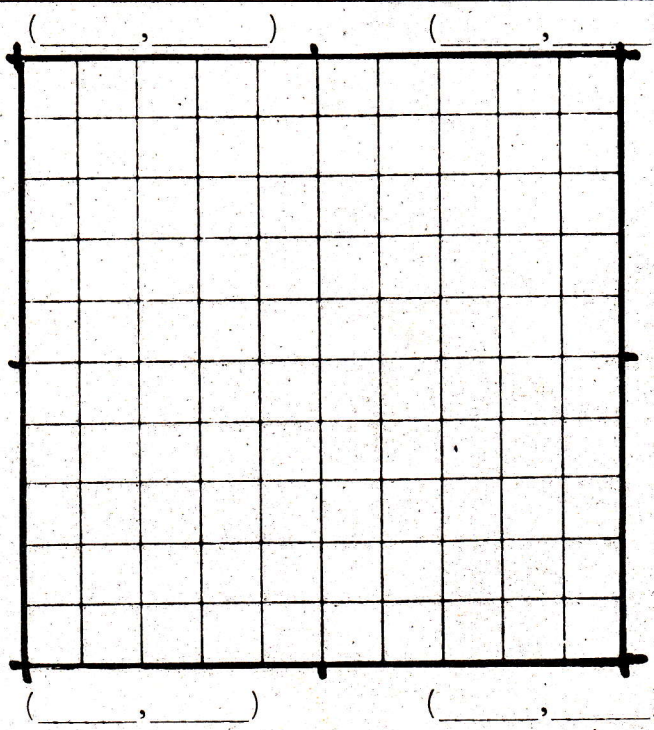
Level No.: 46-1



Level No.: _____



Level No.: _____

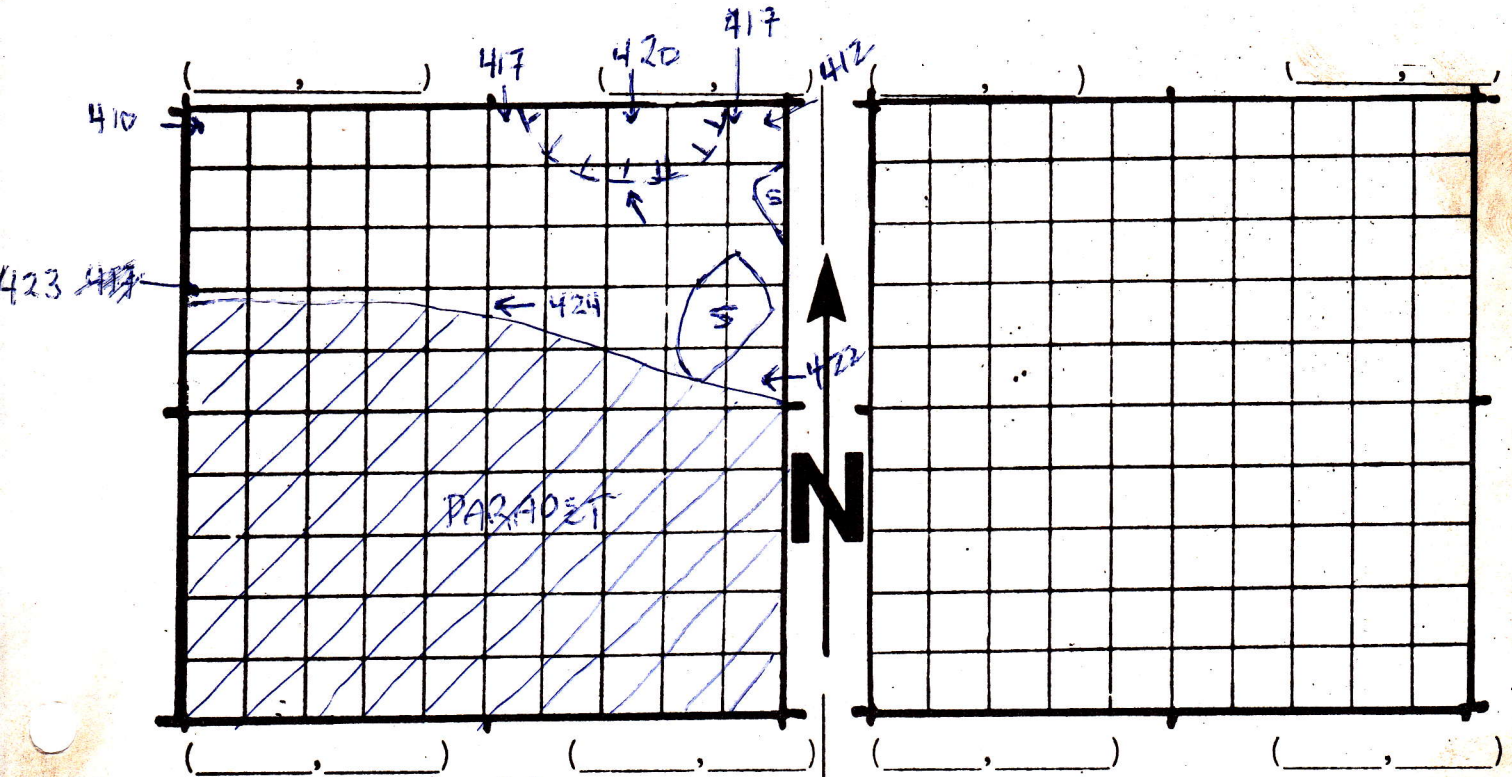


Level No.: _____

1. Excavation Unit: 27 N20-21 E20-21

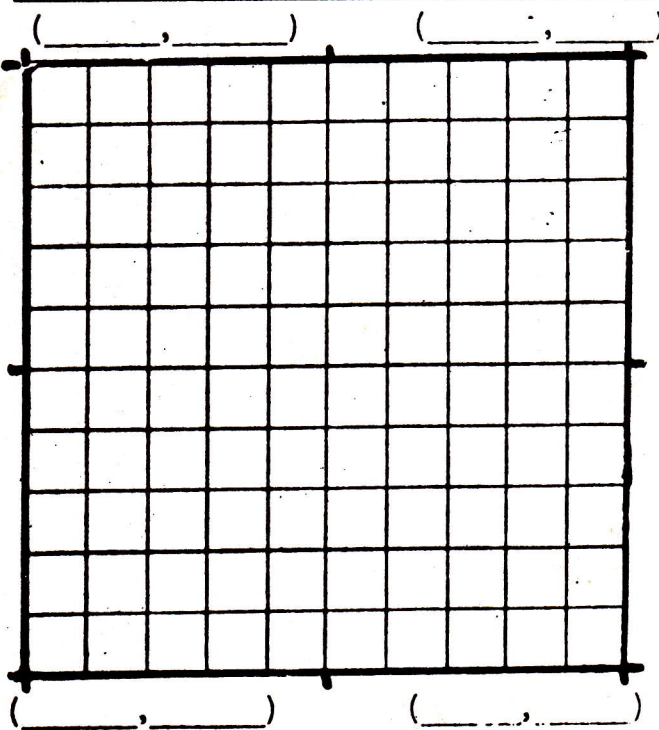
2. Level Nos.: 84-1 3. Excavators: HANDLEY

4. Comments:

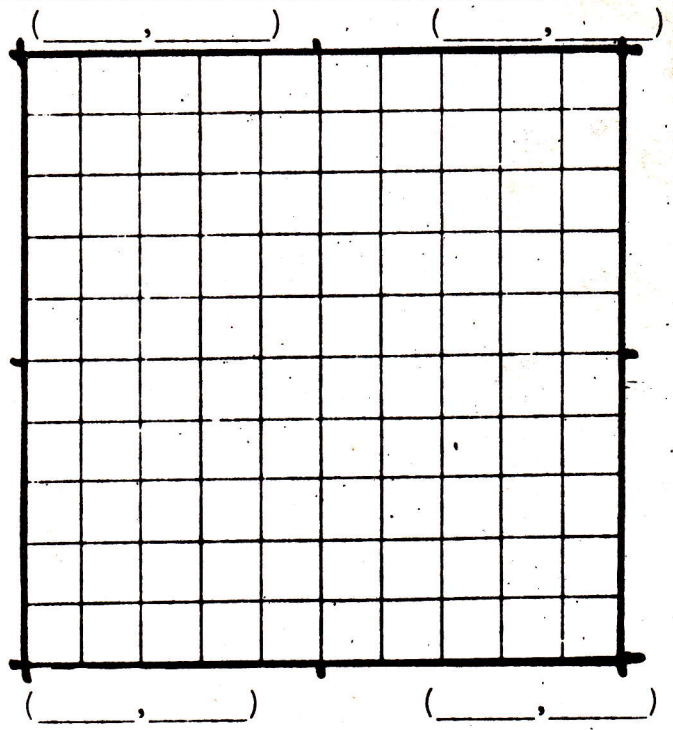


Level No.: 84-1

Level No.: _____



Level No.: _____



Level No.: _____

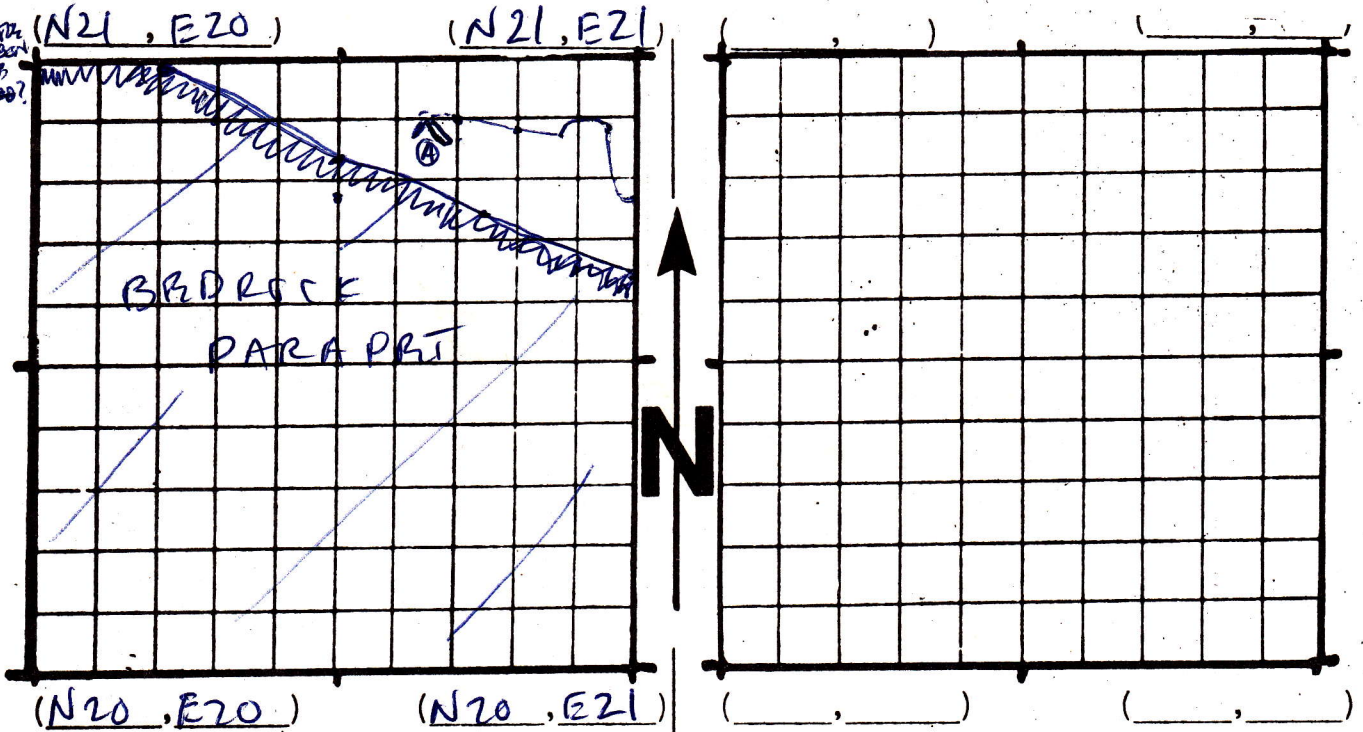
H = 10 cm.

1. Excavation Unit: 27 N 20-21 E 20-21

2. Level Nos.: 92-1 3. Excavators: GMS

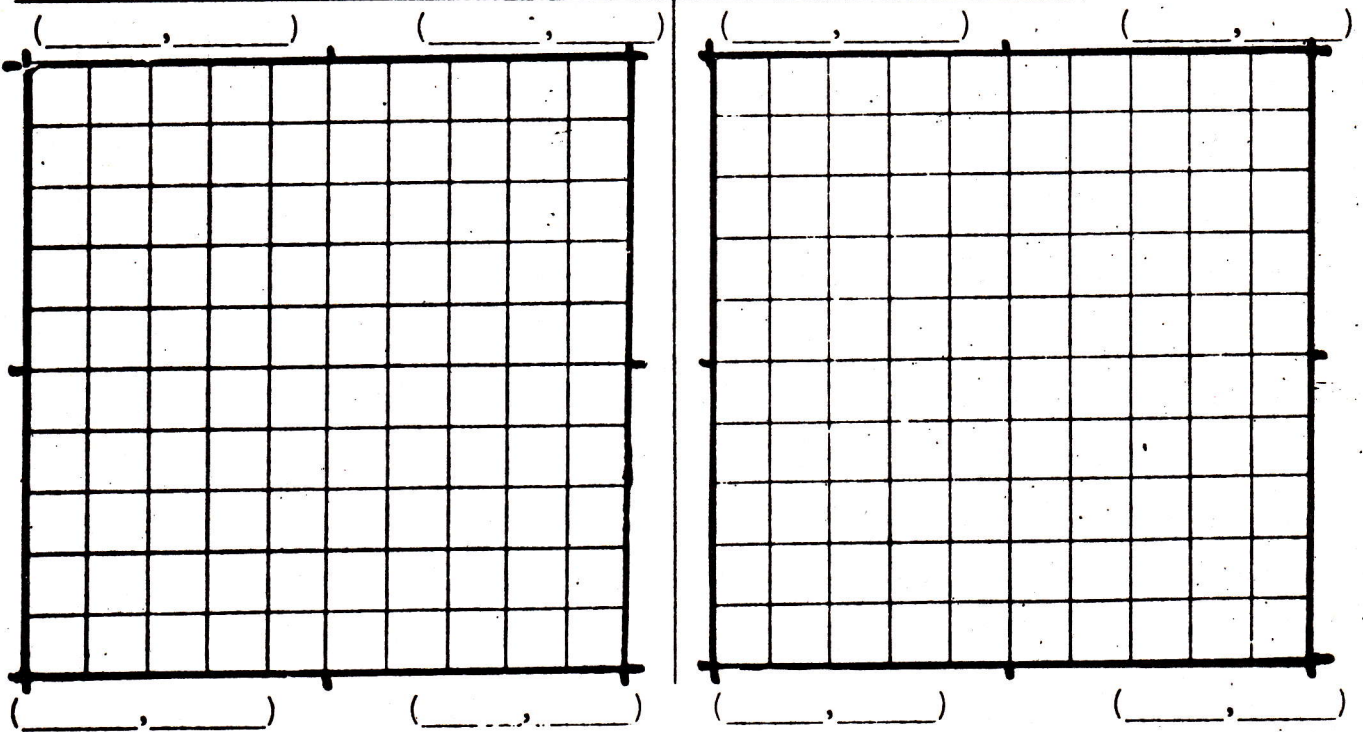
4. Comments:

ARTICULATED
LONG
FRAG - 0200?
N 20.90
E 20.44
OBD = 434
SLOPES
DOWN TO
SE



Level No.: 92-1

Level No.:



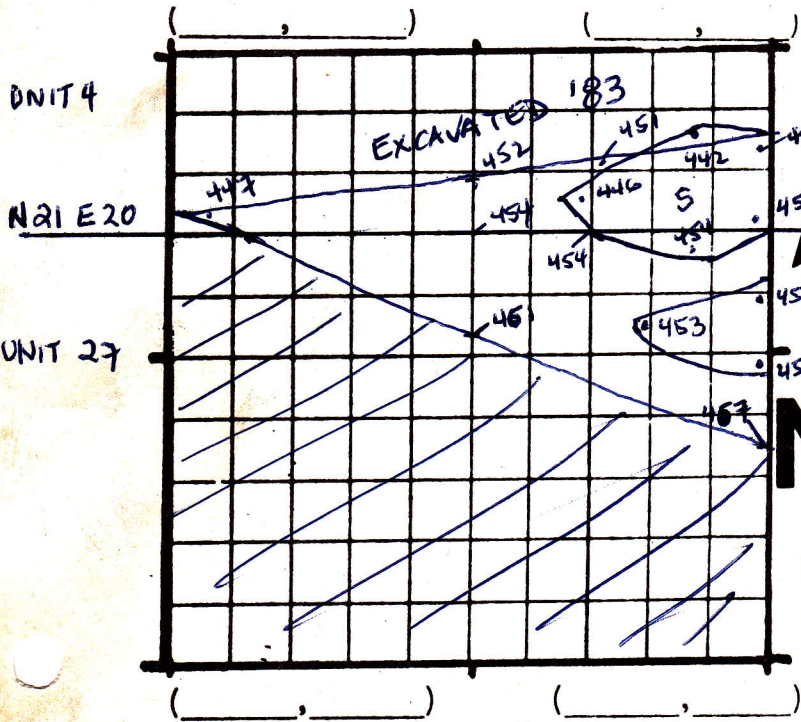
Level No.:

Level No.:

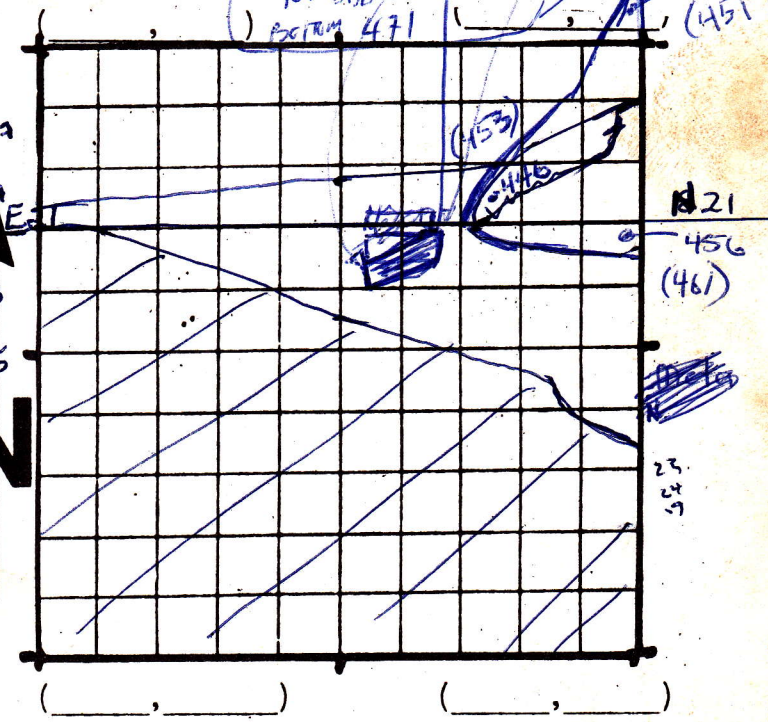
10 = 10 cm.

- 1. Excavation Unit: 27 N20-21 E20-21
- 2. Level Nos.: 98-1, 98-2, 100-1 3. Excavators: MANDLY
- 4. Comments: NEW DATUM @ 428 bd in south wall.

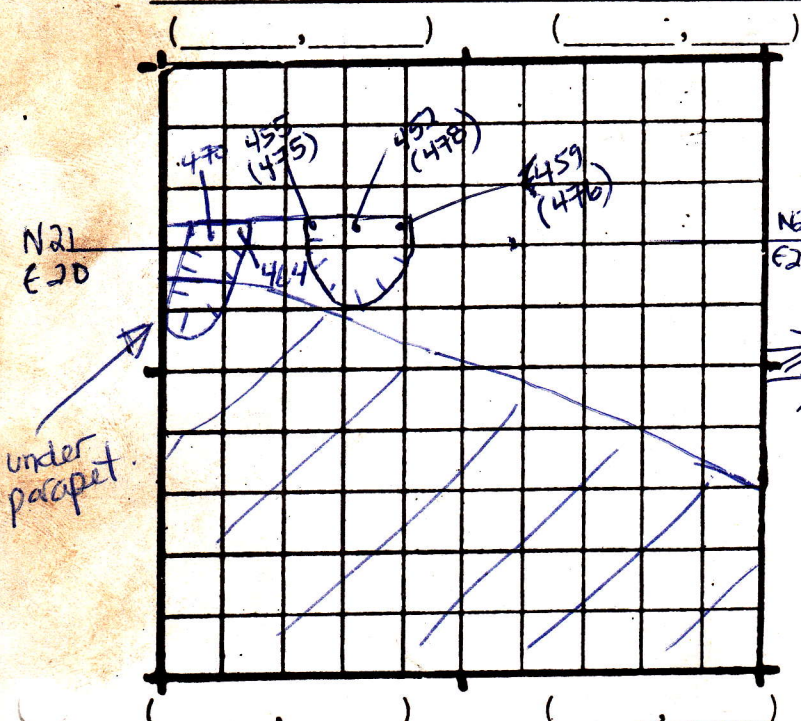
Metapodial
 TOP DBD 468
 BOTTOM 471
 TOP DBD 447
 BOTTOM 470



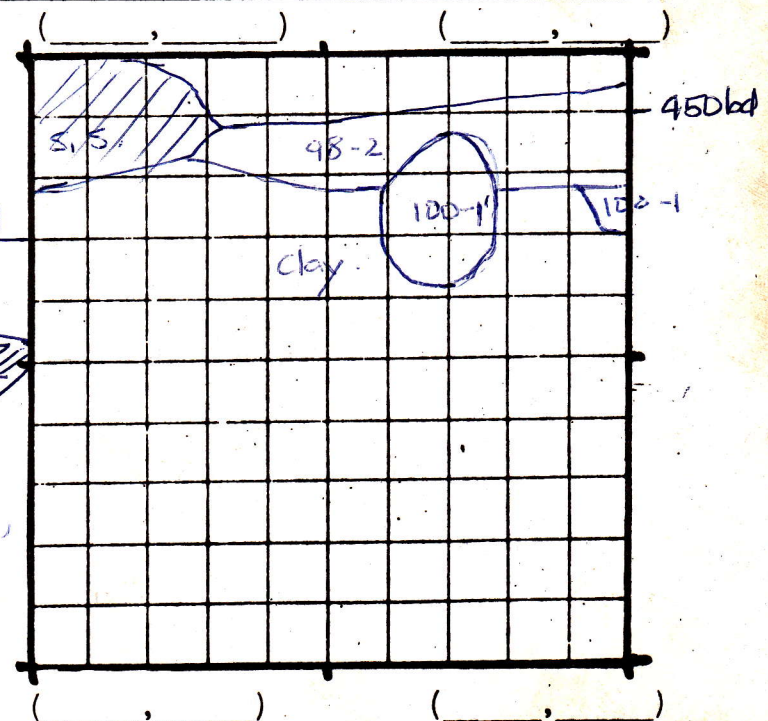
Level No.: 98-1



Level No.: 98-2



Level No.: 100-1



Level No.: Profile 100-1 south wall

under parapet.

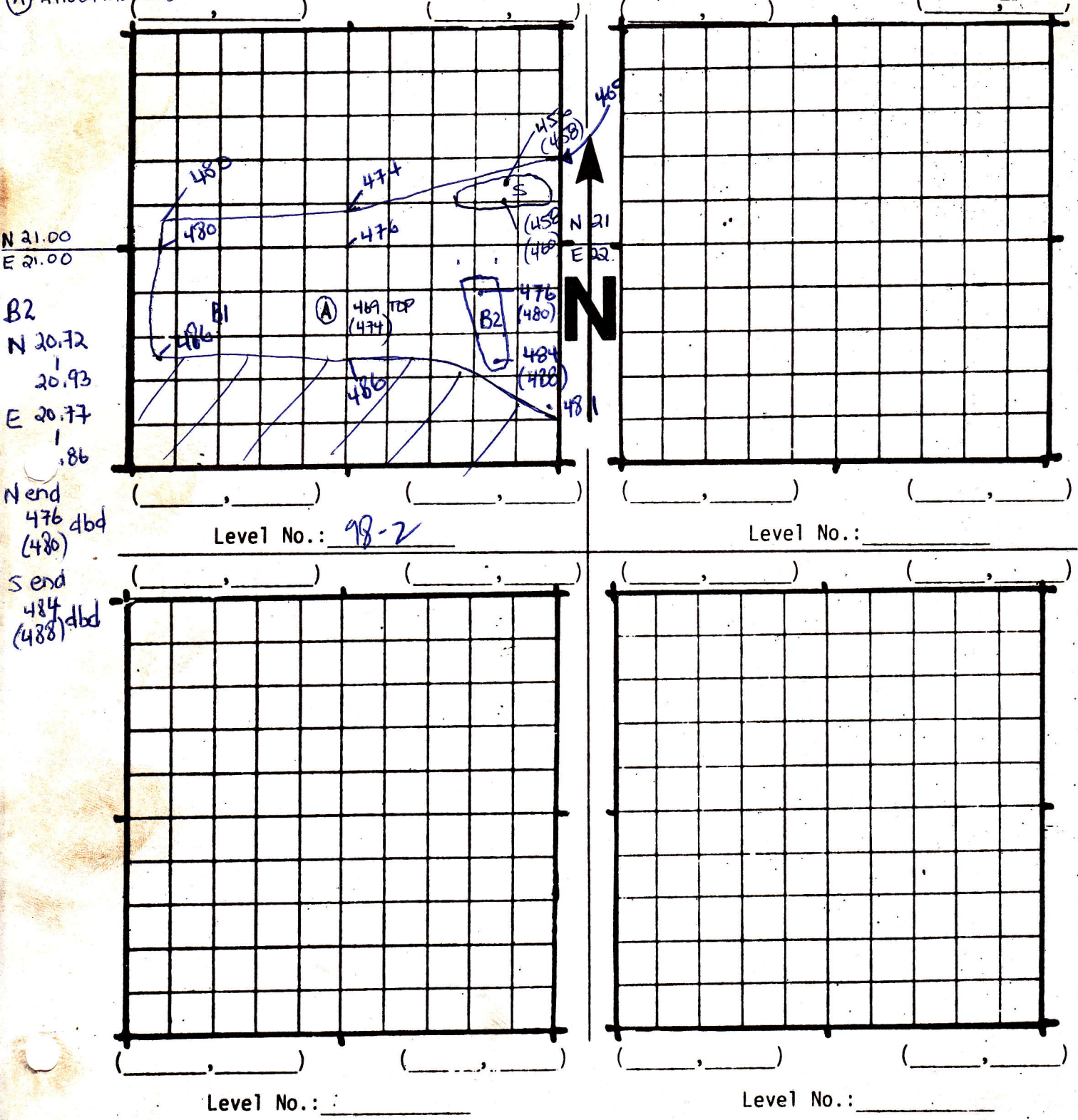
rodent hole.

10 cm.

- 1. Excavation Unit: 27 N 20-21 E 20-21
- 2. Level Nos.: 98-2
- 3. Excavators: HANDLY
- 4. Comments:

add datum 426.

(A) Allochthonous.

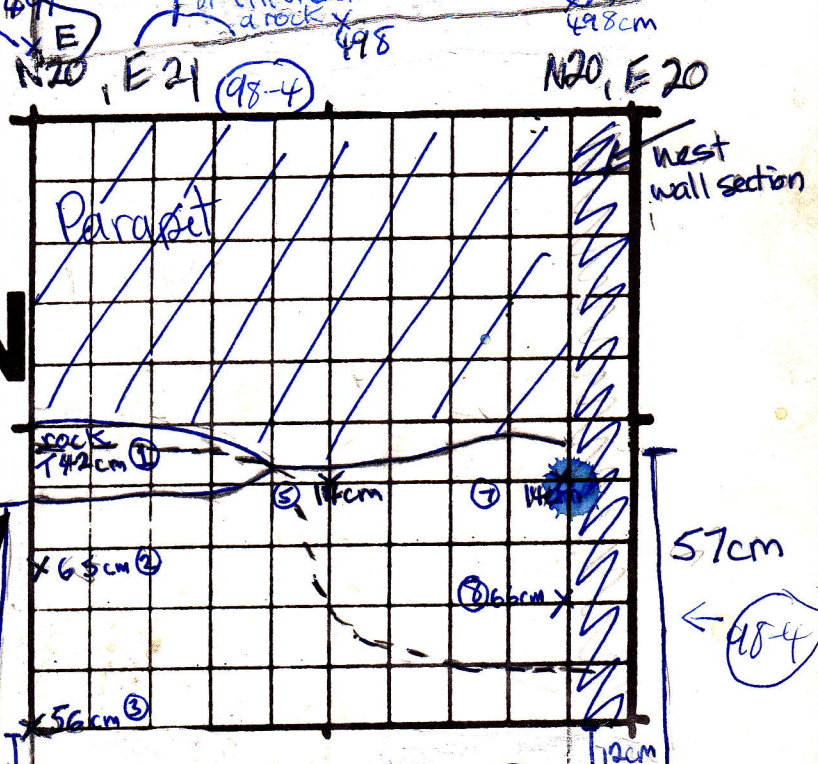
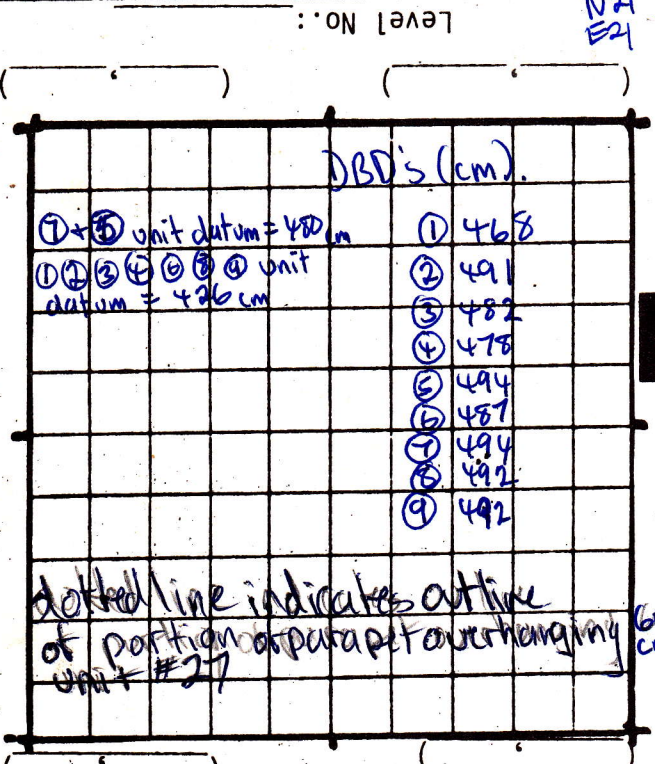
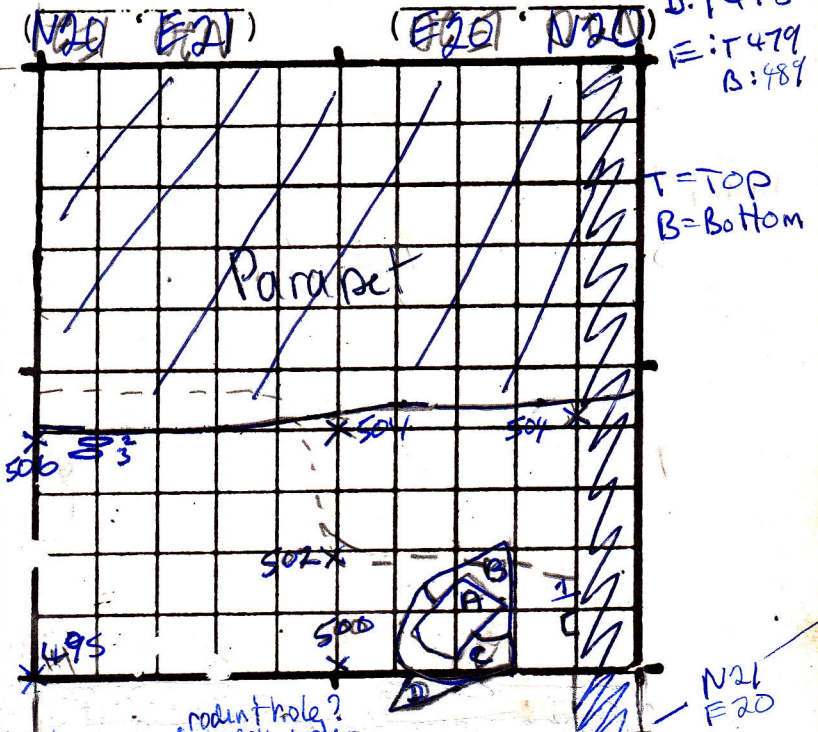
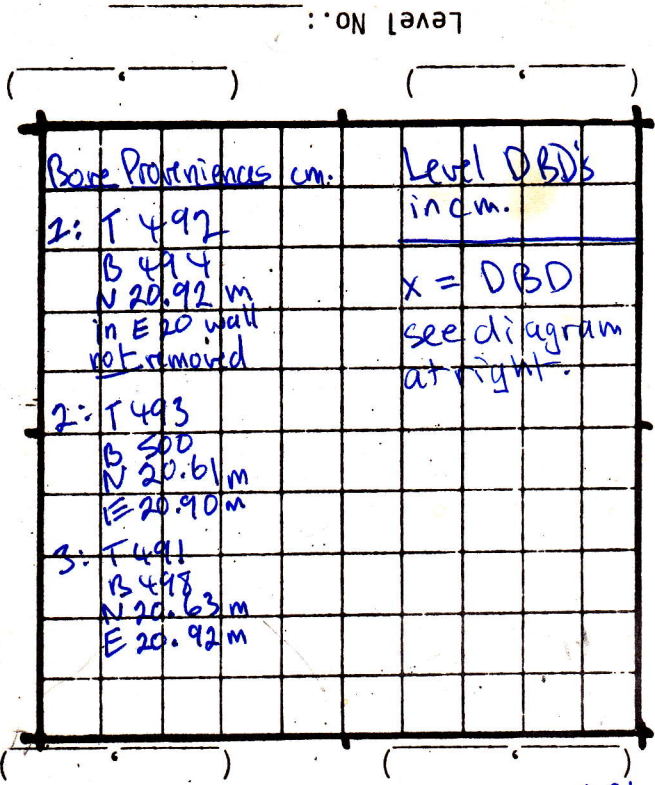


I = 10 cm.

85
 Rock DBD's cm.
 A: T 493
 B: 496 rocks not yet removed
 B: T 496 B 499
 C: T 500
 D: T 495
 E: T 479 B: 487

= 10 cm

98-5



4 Comments:
 1. Excavation Unit: N20-21 E20-21
 2. Level Nos.: 98-4, 98-5
 3. Excavators: SD W
 N21 E21

- 1. Excavation Unit: 27 N20-21 E20-21
- 2. Level Nos.: 98-6 3. Excavators: SDM
- 4. Comments: extension into unit #4 (undercut in 1983).

Ke
 T = top
 B = bottom
 all DBD's in cm.
 N21, E20
 12cm
 Sandstone
 Rocks
 A: T 98-5 for this
 B: S 04 DBD
 B: T 504 DBD
 B not removed yet
 C: T 500 DBD
 B not removed yet
 Bones
 1: 499-504 DBD
 N20.61 m
 E20.87 m
 2: 500-506 DBD
 N20.42 m
 E 84 m
 3: 501-506 DBD
 N20.59
 E 20.81 m
 4: not yet removed, part of thoracic spine found in earlier level

