

## Appendix C. Temperature Data

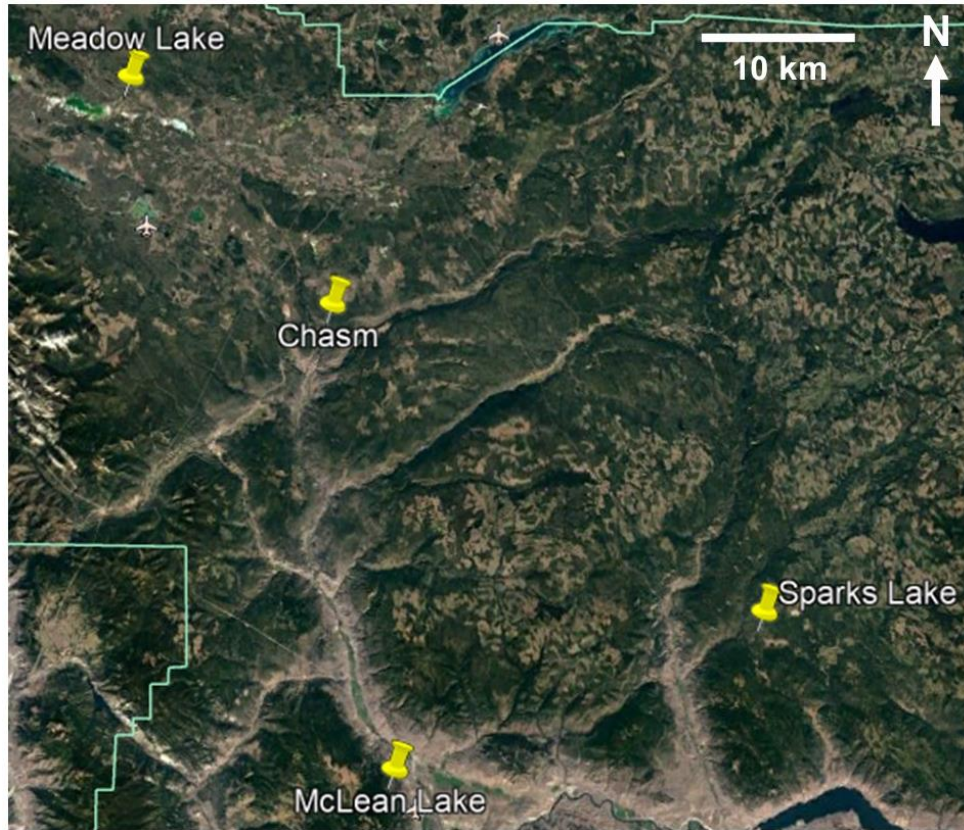


Figure C1. Weather station locations for comparison with Chasm temperature data. Imagery from Google Earth Pro, version 7.3.3.7786 (2020).

Table C1. Air temperature data (in degrees Celsius) for McLean Lake, Meadow Lake, and Sparks Lake weather stations for the survey times on August 2 and August 3, 2015.

Time	McLean Lake	Meadow Lake	Sparks Lake
20:00	24.2	23.1	10
21:00	23.3	19.1	10
22:00	21	16.2	9.7
23:00	21.4	13.1	9.8
00:00	20.6	11.2	8.7
01:00	17.8	9.4	8.7
02:00	17	9.9	8.8
03:00	15.8	6.7	7.9
04:00	16.3	5.2	7.8
05:00	15.2	4.5	8

Window 1 (LIP1 slope at the Chasm, see Figure 3-2 in main text for location)

**Table C2. POI slope surface temperatures (in degrees Celsius) in Window 1 for all times of the survey on August 2 to August 3, 2015.**

Time	20:05	21:05	22:05	23:05	00:05	01:05	02:05	03:05	04:05	05:05
Point 1	29.1	25.2	27.2	21	19.6	17.5	16.8	16.5	14.3	12.1
Point 2	28.9	25.3	27.2	20.7	19	17.4	16.3	16.3	13.5	11.4
Point 3	28.4	24	25.4	19.8	17.8	15.9	15.2	14.8	12.2	9.9
Point 4	27.8	23.9	25.8	20.5	18.5	17.3	15.9	16.3	13.7	11.3
Point 5	27.6	23.8	25.3	19.9	17.9	16.1	15.2	14.8	11.9	10.1

**Table C3. Slope surface temperatures (in degrees Celsius) along Column 54 in Window 1 for all times of the survey on August 2 to August 3, 2015.**

Pixel Count	20:05	21:05	22:05	23:05	00:05	01:05	02:05	03:05	04:05	05:05
1	24.51	21	22.09	17.52	15.73	13	12.02	11.73	8.86	6.26
2	24.41	21	22.18	17.8	16.04	13	12	11.67	8.8	6.03
3	24.33	21	22.31	17.72	16	13	12	11.62	8.8	5.91
4	24.15	21	22.28	17.77	16.08	13	12	11.67	8.8	6.06
5	24.46	21	22.73	17.89	16.24	13	12	11.82	8.8	6.29
6	24.43	21	22.92	17.86	16.45	13	12	11.96	8.8	6.44
7	25.2	21.06	22.98	17.96	16.37	13	12	12.25	8.8	6.56
8	25.89	21.45	22.4	18.07	16.24	13	12.02	12.27	8.86	6.68
9	26.55	21.76	22.4	17.82	16.04	13	12.07	12.16	8.83	6.94
10	26.75	21.82	22.24	17.77	15.88	13	12	12.07	8.8	7.09
11	26.47	21.78	22.58	17.77	15.88	13.06	12.09	12.25	8.88	7.12
12	26.5	21.86	22.31	17.94	15.9	13.19	12.23	12.36	9.03	7.24
13	26.19	21.47	22	17.75	15.82	13	12.11	12.19	8.94	7.41
14	26.17	21.18	21.97	17.6	15.67	13	12	12.19	8.8	7.29
15	26.09	21.39	22.03	17.72	15.84	13	12	12.33	8.83	7.09
16	26.09	21.45	22.15	17.78	15.82	13	12.18	12.33	8.83	7.21
17	26.19	21.51	22.18	17.78	15.8	13	12.23	12.25	8.8	7.26
18	26.55	21.86	22.43	17.88	15.84	13	12.14	12.16	8.8	7.26
19	26.85	22.12	23.47	18.18	16.06	13.11	12.16	12.33	8.8	7.26
20	27.72	22.94	24.14	18.68	16.63	13.8	12.66	12.85	9.22	7.47
21	27.82	23.24	24.23	18.99	16.92	14.42	13.27	13.42	9.99	7.97
22	27.34	23.02	23.99	18.88	16.94	14.23	13.41	13.48	10.21	8.53
23	27.49	22.86	23.71	18.65	16.76	14.19	13.36	13.25	10.16	8.74
24	27.29	22.73	22.76	18.27	16.37	13.95	13.36	12.99	9.96	8.47
25	26.65	21.98	22.12	17.77	16	13.28	12.64	12.48	9.42	8
26	26.37	21.82	22.4	17.85	15.94	13.02	12.2	12.33	8.88	7.53
27	26.57	22.02	23.35	18.29	16.18	13.41	12.36	12.79	9.05	7.35

Pixel Count	20:05	21:05	22:05	23:05	00:05	01:05	02:05	03:05	04:05	05:05
28	26.96	22.65	23.22	18.62	16.69	13.93	12.84	13.22	9.68	7.65
29	26.65	22.51	22.86	18.38	16.49	13.58	12.77	13.02	9.82	8.06
30	26.01	21.8	22.31	18	16.25	13.28	12.41	12.82	9.45	8.12
31	25.94	21.59	22.73	18.11	16.22	13.19	12.52	12.76	9.17	7.91
32	25.84	21.76	22.89	18.19	16.41	13.37	12.64	12.93	9.34	7.71
33	26.01	21.96	23.1	18.44	16.49	13.71	12.82	13.02	9.48	7.79
34	26.45	22.27	24.32	18.88	16.96	14.16	13.23	13.48	9.79	8.06
35	27.16	23.14	25.4	19.49	17.65	15.11	13.93	13.94	10.41	8.5
36	27.47	23.59	25.12	19.73	17.84	15.37	14.21	14.36	11.09	9.09
37	27.26	23.53	25.24	19.75	17.84	15.48	14.25	14.62	11.51	9.59
38	27.39	23.49	25.3	19.81	18.06	16.06	14.8	15.11	11.82	10
39	26.98	23.27	24.91	19.64	18.14	15.98	15.09	15.11	12.22	10.5
40	26.98	23.08	24.39	19.35	17.65	15.35	14.73	14.42	11.85	10.68
41	27.24	23.14	24.51	19.23	17.37	14.6	14.09	13.88	10.89	10
42	27.39	23.18	24.54	19.16	17.35	14.42	13.5	13.45	10.18	9
43	27.77	23.29	24.84	19.24	17.37	14.6	13.52	13.42	10.04	8.44
44	27.82	23.59	25.4	19.54	17.37	14.98	13.84	13.73	10.24	8.41
45	27.87	23.88	26.04	19.85	17.9	15.37	14.23	14.16	10.58	8.68
46	27.87	23.98	26.59	20.37	18.39	15.87	14.57	14.65	11.06	9.06
47	27.36	23.94	26.31	20.58	18.73	16.17	14.87	15.05	11.85	9.68
48	26.65	23.47	24.66	19.62	18.29	15.91	15	14.65	11.93	10.18
49	26.42	22.51	24.51	19.1	17.47	14.88	14.18	14.34	11.28	10.03
50	26.45	22.69	23.99	19.16	17.37	15.16	14.12	13.96	10.92	9.47
51	26.55	22.53	23.96	18.87	16.88	14.77	14	13.65	10.49	8.91
52	27.14	22.84	24.32	19.13	17.06	14.55	13.82	13.62	10.18	8.62
53	27.7	23.27	25.12	19.6	17.61	15.14	13.93	14.16	10.58	8.65
54	27.8	23.69	25.43	19.89	18.06	15.8	14.48	14.88	11.28	9.26
55	27.62	23.63	25.52	19.96	18.06	16.06	15.12	15.37	11.99	10.18
56	27.39	23.55	25.06	19.79	18.22	16.26	15.64	15.6	12.75	10.85
57	26.73	22.98	24.05	19.16	17.53	15.76	15.25	14.74	12.5	11.12
58	26.27	22.16	22.89	18.24	16.55	14.04	13.75	13.51	10.92	10.35
59	26.19	21.94	23.22	18.44	16.55	13.67	12.73	13.22	9.84	8.91
60	26.24	22.2	23.59	18.8	16.92	13.93	12.86	13.28	9.68	8.03
61	26.73	22.63	24.57	19.12	17.22	14.36	13.21	13.65	9.84	8.03
62	27.29	23.2	25.33	19.6	17.59	14.96	13.64	13.91	10.32	8.44
63	27.65	23.69	25.24	19.78	17.75	15.22	13.96	14.02	10.61	8.74
64	27.95	23.98	25.82	20.06	17.88	15.46	14.21	14.22	10.83	9
65	28.08	24.16	25.79	20.11	17.96	15.65	14.25	14.36	11	9.12
66	28.03	24.2	25.76	19.85	17.73	15.46	14.37	14.39	11.09	9.26
67	27.9	23.9	25.46	19.84	17.73	15.39	14.5	14.42	11.2	9.29

Pixel Count	20:05	21:05	22:05	23:05	00:05	01:05	02:05	03:05	04:05	05:05
68	27.93	24.04	25.7	19.87	17.78	15.67	14.57	14.42	11.17	9.35
69	27.93	23.92	26.04	20.07	18.22	16.04	14.84	14.97	11.34	9.5
70	27.8	24.35	26.99	20.83	18.88	16.86	15.53	16	12.36	10.12
71	27.59	24.41	26.65	20.72	19.14	17.68	16.73	16.65	13.46	11.24
72	27.36	24.16	26.37	20.42	18.94	17.46	16.87	16.88	14	12.12
73	27.29	23.9	26.44	20.64	19	17.57	16.8	17.03	14.16	12.5
74	27.65	23.9	25.98	20.45	18.73	17.42	16.91	16.88	14.05	12.56
75	27.77	24.1	26.28	20.44	18.73	17.23	16.8	16.68	13.91	12.5
76	28.13	24.25	26.22	20.39	18.69	17.23	16.73	16.6	13.83	12.35
77	28.33	24.22	26.34	20.25	18.57	17.18	16.59	16.45	13.74	12.21
78	28.51	24.39	26.25	20.18	18.59	16.97	16.44	16.28	13.54	12
79	28.54	24.45	26.34	20.44	18.39	17.01	16.28	16.14	13.4	11.79
80	28.61	24.39	26.4	20.37	18.61	16.9	16.23	16	13.35	11.65
81	28.54	24.45	25.98	20.15	18.37	16.67	16.12	15.91	13.12	11.5
82	28.36	24.24	25.82	19.92	18.14	16.36	15.73	15.45	12.7	11.26
83	28.05	24.06	25.12	19.65	17.78	15.95	15.37	15.14	12.3	10.88
84	27.29	23.57	24.94	19.79	17.86	16.34	15.5	15.62	12.47	10.82
85	26.45	23.18	24.75	19.89	18.39	16.69	16.07	16.11	13.12	11.24
86	26.17	22.8	24.45	19.59	18.16	16.58	16.14	16.23	13.54	11.91
87	26.12	22.67	24.45	19.62	18.08	16.65	16.23	16.37	13.71	12.21
88	26.27	22.69	24.84	19.62	18.2	16.82	16.41	16.65	13.88	12.24
89	26.78	22.9	24.81	19.67	18.27	16.82	16.55	16.37	13.8	12.21
90	27.14	23.14	25.15	19.75	18.14	16.52	16.07	16.2	13.52	12.18
91	27.42	23.51	25.67	20.12	18.35	16.77	16.09	16.28	13.43	11.97
92	27.49	23.59	25.76	20.14	18.33	16.9	16.16	16.2	13.4	11.88
93	27.65	23.73	25.76	19.95	18.29	16.62	15.91	15.68	13.12	11.71
94	27.7	23.63	25.36	19.79	18.04	16.24	15.37	15.28	12.58	11.24
95	27.85	23.76	26.04	19.92	18.14	16.21	15.41	15.45	12.44	10.82
96	27.93	23.84	25.7	19.96	18.37	16.49	15.87	15.68	12.67	10.76
97	27.95	23.84	25.67	19.96	18.25	16.58	15.87	15.6	12.72	10.94
98	27.95	23.94	26.01	19.96	18.33	16.41	15.59	15.6	12.67	11
99	27.93	23.9	25.67	20.07	18.29	16.41	15.55	15.57	12.7	11.06
100	27.65	23.71	25.43	19.82	18.18	16.34	15.59	15.6	12.72	11.15
101	27.36	23.47	25.12	19.73	18.06	16.54	15.62	15.74	12.87	11.12
102	26.85	23.22	24.08	19.24	17.71	16.17	15.53	15.57	12.95	11.15
103	26.7	22.63	23.41	18.73	16.98	15.39	15.05	14.85	12.24	10.91
104	27.03	22.47	23.41	18.51	16.57	14.57	13.98	13.99	11.09	10.15
105	26.91	22.53	22.95	18.38	16.59	14.38	13.43	13.65	10.49	9.29
106	26.73	22.22	23.04	18.38	16.49	14.1	13.46	13.62	10.49	8.82
107	26.75	22.41	23.47	18.44	16.63	14.45	13.41	13.79	10.47	8.79

Pixel Count	20:05	21:05	22:05	23:05	00:05	01:05	02:05	03:05	04:05	05:05
108	26.96	22.51	23.41	18.52	16.63	14.47	13.61	13.82	10.58	8.85
109	27.08	22.69	23.53	18.73	16.76	14.57	13.66	13.85	10.69	9
110	27.39	22.9	23.8	18.74	16.84	14.81	13.61	13.96	10.92	9.12
111	27.47	22.92	23.87	18.69	16.82	14.7	13.84	13.99	10.97	9.21
112	27.49	23.12	23.9	18.79	16.96	14.79	13.87	13.96	10.89	9.24
113	27.42	23.14	24.17	18.95	17.08	14.92	13.8	14.02	10.97	9.21
114	27.44	23.2	24.32	19.01	17.22	14.98	13.87	14.16	11.17	9.24
115	27.65	23.24	24.57	19.21	17.27	15.18	14.05	14.31	11.2	9.32
116	28.26	23.65	24.84	19.42	17.47	15.26	14.16	14.22	11.14	9.38
117	28.74	23.9	25.12	19.31	17.39	15.2	14.14	14.16	11.06	9.15
118	29	24.08	25.33	19.48	17.57	15.39	14.37	14.45	11.14	9.09
119	29	24.24	25.3	19.6	17.76	15.78	14.8	14.57	11.45	9.38
120	27.95	23.94	24.48	19.26	17.51	15.35	14.66	14.45	11.54	9.65
121	26.83	23.16	23.19	18.52	16.82	14.75	13.98	13.94	11.12	9.59
122	26.19	22.25	22.67	17.91	16.2	13.97	13.09	13.45	10.35	9.03
123	26.09	21.73	22.46	17.93	16	13.71	12.77	13.08	9.82	8.38
124	26.14	21.8	22.7	18.04	16.04	13.58	12.82	13.19	9.76	7.94
125	26.63	22.02	23.22	18.32	16.49	14.14	13	13.39	9.96	8.03
126	26.68	22.45	23.32	18.43	16.59	14.25	13.25	13.59	10.24	8.35
127	26.65	22.47	22.8	18.3	16.47	14.21	13.39	13.59	10.38	8.59
128	26.37	22.35	22.49	18.04	16.22	13.8	13.16	13.45	10.16	8.47
129	26.4	22	22.24	17.8	15.94	13.52	12.73	13.05	9.68	8.09
130	26.45	21.71	22.18	17.72	15.88	13.5	12.57	12.85	9.34	7.76
131	26.57	21.98	22.55	17.96	16	13.47	12.66	12.96	9.45	7.71
132	26.57	21.98	22.61	18.19	16.29	13.78	12.84	13.11	9.76	7.76
133	26.55	22.25	22.67	18.18	16.25	13.97	12.89	13.16	9.87	7.91
134	26.68	22.2	22.86	18.05	16.25	13.58	12.84	13.05	9.73	8.03
135	27.47	22.43	23.5	18.49	16.53	13.93	12.8	13.13	9.84	8
136	27.59	22.94	23.77	18.84	16.84	14.25	13	13.42	10.24	8.06
137	27.14	22.84	23.93	18.79	17.02	14.55	13.48	13.82	10.61	8.44
138	26.65	22.75	22.95	18.27	16.59	14.36	13.77	13.65	10.58	8.62
139	26.55	22.06	22.18	17.86	15.94	13.67	13.07	13.22	9.99	8.41
140	26.78	21.96	22.58	18.15	16.08	13.39	12.66	12.9	9.56	7.88
141	27.34	22.27	23.59	18.54	16.55	13.91	12.86	13.05	9.7	7.68
142	28.26	23	24.48	18.99	16.96	14.64	13.32	13.53	10.3	8.06
143	28.44	23.69	24.94	19.37	17.31	14.98	13.77	13.91	10.8	8.65
144	28.46	23.92	24.63	19.05	17.25	15.03	13.84	14.02	10.92	9.03
145	28.23	23.67	24.72	19.26	17.39	15.07	13.93	14.22	10.97	9.09
146	28.33	23.8	25.06	19.45	17.59	15.35	14.16	14.36	11.26	9.15
147	28	23.76	24.57	19.1	17.33	15.18	14.27	14.25	11.14	9.26

Pixel Count	20:05	21:05	22:05	23:05	00:05	01:05	02:05	03:05	04:05	05:05
148	28.13	23.65	24.42	19.04	17.08	14.66	13.82	13.88	10.78	9.06
149	28.05	23.57	24.45	19.32	17.41	14.68	13.66	13.85	10.69	8.79
150	27.9	23.69	25.06	19.59	17.8	15.46	14.12	14.42	11.23	8.91
151	27.65	23.84	25.46	19.85	18.08	16.24	15.05	15.17	12.1	9.59
152	27.26	23.67	25.46	20.01	18.27	16.41	15.5	15.65	12.7	10.44
153	27.16	23.47	25.33	20.23	18.47	16.62	15.87	16	13.23	11.09
154	27.14	23.49	25.15	19.89	18.31	16.69	16.14	16.28	13.66	11.53
155	27.19	23.25	25.03	19.57	17.9	16.49	16.09	16.03	13.54	11.79
156	27.39	23.25	24.91	19.6	17.92	16.43	15.89	15.85	13.18	11.71
157	27.44	23.33	24.88	19.56	17.76	16.28	15.71	15.6	12.95	11.38
158	27.19	23.24	24.45	19.32	17.61	16	15.57	15.42	12.72	11.09
159	27.08	23.06	24.54	19.21	17.61	15.85	15.23	15.28	12.47	10.79
160	27.14	23.12	24.6	19.35	17.65	15.91	15.25	15.17	12.27	10.5
161	26.93	23.02	24.39	19.59	17.71	15.74	15.05	15.17	12.3	10.32
162	26.68	22.88	24.97	19.76	18.04	16.17	15.12	15.34	12.5	10.38
163	26.8	23.12	25.43	19.95	18.35	16.65	15.62	15.74	12.95	10.82
164	26.96	23.12	25	19.67	17.9	16.41	15.5	15.71	12.98	11.18
165	27.06	23.18	24.66	19.49	17.61	15.95	15.21	15.28	12.64	11
166	27.19	23.04	24.66	19.24	17.43	15.63	14.98	14.99	12.33	10.53
167	27.34	23.12	24.42	19.37	17.47	15.67	14.87	14.99	12.19	10.29
168	27.24	23.08	24.17	19.29	17.35	15.67	14.77	14.88	12.16	10.26
169	27.08	22.9	24.11	19.12	17.41	15.61	14.77	14.94	12.05	10.21
170	26.98	22.84	23.99	19.2	17.35	15.55	14.96	14.91	12.05	10.18
171	26.8	22.76	23.62	18.93	17.2	15.37	14.64	14.74	11.88	10.03
172	26.88	22.57	23.8	18.84	16.94	14.96	14.32	14.36	11.45	9.88
173	26.96	22.65	23.65	18.95	16.98	14.88	14.02	14.36	11.23	9.56
174	26.8	22.61	23.96	18.85	17.04	15.11	14.12	14.51	11.26	9.38
175	27.01	22.78	24.14	19.15	17.16	15.44	14.52	14.68	11.6	9.62
176	27.19	22.9	24.26	19.1	17.27	15.33	14.71	14.82	11.85	9.94
177	27.42	22.96	24.48	19.29	17.35	15.55	14.89	14.91	11.88	10.03
178	27.31	23.2	24.51	19.4	17.53	15.74	14.91	14.99	12.05	10.09
179	27.42	23.33	24.72	19.45	17.69	15.76	14.91	15.11	12.24	10.18
180	27.26	23.22	24.78	19.51	17.53	15.78	14.82	15.11	12.27	10.38
181	27.29	23.25	24.81	19.59	17.71	15.87	15.05	15.19	12.39	10.47
182	27.65	23.25	24.94	19.7	17.84	15.83	15.05	15.25	12.47	10.5
183	27.65	23.49	25.06	19.54	17.71	15.78	15	15.17	12.36	10.53
184	27.98	23.47	25.12	19.42	17.65	15.83	14.75	15.05	12.08	10.44
185	27.9	23.55	25.12	19.67	17.71	15.76	14.77	15.11	12.02	10.32
186	27.87	23.61	25.24	19.65	17.84	15.8	14.91	15.19	12.22	10.29
187	27.75	23.61	24.91	19.56	17.73	15.91	15.07	15.08	12.3	10.32

Pixel Count	20:05	21:05	22:05	23:05	00:05	01:05	02:05	03:05	04:05	05:05
188	27.57	23.37	24.94	19.37	17.65	15.7	14.91	14.79	12.05	10.21
189	27.44	23.18	24.78	19.34	17.41	15.39	14.48	14.65	11.68	9.91
190	27.54	23.22	24.94	19.64	17.47	15.48	14.32	14.57	11.76	9.71
191	27.67	23.43	24.88	19.62	17.67	15.67	14.59	14.79	11.88	9.76
192	27.57	23.29	25.15	19.46	17.53	15.61	14.8	14.85	11.88	9.88
193	27.65	23.41	24.78	19.54	17.86	15.67	14.73	14.91	11.85	9.97
194	27.49	23.45	25.15	19.59	17.71	15.83	14.89	15.05	12.02	10.03
195	27.49	23.35	25.4	19.81	17.98	16.02	15.12	15.22	12.36	10.18
196	27.42	23.45	25.52	19.95	18.1	16.26	15.34	15.54	12.67	10.44
197	27.29	23.57	25.4	19.92	18.16	16.3	15.62	15.71	12.84	10.65
198	27.11	23.39	25	19.92	17.98	16.24	15.57	15.68	12.81	10.85
199	27.03	23.25	24.97	19.78	17.92	16.3	15.43	15.71	12.81	10.88
200	26.85	23.08	25.06	19.95	18.14	16.36	15.53	15.77	12.98	10.94
201	26.7	23.35	25.21	20.06	18.18	16.71	15.98	16.14	13.37	11.21
202	26.78	23.16	24.84	19.79	18.06	16.52	15.82	15.97	13.46	11.47
203	26.83	23.02	24.63	19.53	17.78	16.08	15.3	15.6	12.89	11.38
204	26.93	23	24.72	19.71	17.8	15.91	15.12	15.51	12.7	11.03
205	27.01	23.04	25.03	19.89	17.96	16.45	15.5	15.68	13.04	10.91
206	27.03	23.24	25.18	19.92	18.06	16.6	15.89	15.94	13.29	11.18
207	26.98	23.18	25.15	19.9	18.02	16.54	15.96	15.82	13.35	11.32
208	26.98	23.12	24.51	19.62	17.92	16.39	15.82	15.71	13.29	11.26
209	26.88	23.02	24.69	19.67	17.8	16.13	15.73	15.65	13.09	11.18
210	27.36	22.94	25.15	19.7	17.9	16.21	15.55	15.54	12.98	10.97
211	27.82	23.33	25.18	19.7	17.76	16.04	15.41	15.37	12.5	10.71
212	28.15	23.59	25.46	19.59	17.65	15.61	14.8	14.97	11.91	10.35
213	28.49	23.84	25.92	19.98	17.94	15.63	14.68	14.88	11.82	9.91
214	28.51	24.29	26.16	20.03	18.16	15.93	15.03	14.94	11.96	9.85
215	28.54	24.24	25.92	19.96	17.96	15.89	15.03	14.97	12.02	9.97
216	28.72	24.31	26.22	20.06	18	15.93	14.98	15.02	12.13	10.06
217	28.38	24.37	26.28	20.18	18.08	16.3	15.25	15.17	12.3	10.15
218	28.33	24.41	26.47	20.33	18.18	16.36	15.62	15.42	12.58	10.35
219	28.38	24.37	26.62	20.37	18.33	16.39	15.75	15.6	12.72	10.56
220	28.28	24.35	26.22	20.15	18.25	16.36	15.75	15.54	12.58	10.65
221	28.15	24.2	26.1	20.06	17.98	16.19	15.53	15.42	12.5	10.59
222	28.31	24.18	25.95	19.9	17.92	16.02	15.39	15.19	12.36	10.38
223	28.36	23.94	25.36	19.71	17.71	15.78	15.16	14.91	12.1	10.15
224	28.49	23.86	25.3	19.59	17.59	15.65	14.96	14.74	11.88	9.88
225	28.36	23.98	25.21	19.53	17.53	15.63	14.68	14.65	11.79	9.74
226	28.28	23.78	25.18	19.62	17.69	15.87	14.89	14.85	11.93	9.76
227	28	23.61	25.36	20.01	18	16.24	15.55	15.19	12.53	10.06

Pixel Count	20:05	21:05	22:05	23:05	00:05	01:05	02:05	03:05	04:05	05:05
228	28.03	23.63	25.76	19.93	18.18	16.47	15.78	15.62	12.92	10.56
229	27.87	23.69	25.46	19.92	18.08	16.15	15.59	15.74	12.89	10.94
230	28.21	23.71	25.27	20.04	18.06	16.15	15.39	15.6	12.72	10.94
231	28.49	24	25.49	19.84	18.04	15.95	15.12	15.45	12.41	10.74
232	28.64	24.02	26.04	20.14	18.18	15.98	15.21	15.31	12.33	10.59
233	28.61	24.25	26.34	20.2	18.24	16.26	15.55	15.45	12.47	10.56
234	28.66	24.27	26.44	20.42	18.53	16.45	15.68	15.62	12.81	10.74
235	28.41	24.25	26.53	20.5	18.55	16.75	15.66	15.77	13.04	10.94
236	28.15	24.2	26.13	20.37	18.47	16.65	15.73	15.74	13.04	11.06
237	27.93	23.96	25.98	20.12	18.39	16.65	15.68	15.77	13.06	11.03
238	27.98	23.69	25.92	20.23	18.53	16.75	15.89	15.91	13.23	11.03
239	27.85	23.94	25.85	20.26	18.51	16.71	16.07	15.91	13.32	11.12
240	28.03	23.78	25.43	20.06	18.27	16.56	15.87	15.68	13.12	11.21
241	27.95	23.69	25.55	20.17	18.2	16.52	15.62	15.6	12.98	11.06
242	27.93	23.59	26.1	20.28	18.69	16.77	15.91	15.82	13.26	11.03
243	27.9	23.82	25.79	20.23	18.51	16.95	16.3	15.97	13.46	11.24
244	28.08	23.67	25.82	20.01	18.22	16.52	16.05	15.8	13.2	11.35
245	28.05	23.8	25.88	20.11	18.41	16.54	15.71	15.68	13.04	11.12
246	28.18	23.94	26.1	20.31	18.55	16.67	15.87	15.77	13.09	10.97
247	27.77	23.8	25.92	20.26	18.55	16.67	16	15.88	13.32	11.15
248	27.42	23.75	25.52	20.23	18.49	16.82	15.98	15.91	13.35	11.29
249	27.47	23.57	25.55	20.14	18.41	16.54	15.82	15.82	13.29	11.29
250	27.62	23.39	25.06	19.79	18.18	16.24	15.82	15.65	13.06	11.09
251	27.9	23.25	24.84	19.73	17.92	15.91	15.66	15.6	12.58	10.76
252	28.21	23.45	25.27	19.67	17.88	16.15	15.73	15.6	12.67	10.53
253	28.21	23.71	25.3	19.64	18	16.15	15.64	15.48	12.81	10.5
254	27.87	23.63	24.88	19.65	17.82	15.89	15.34	15.25	12.56	10.5
255	27.49	23.33	24.32	19.31	17.61	15.72	15.05	15.05	12.33	10.35
256	27.03	23.06	23.87	18.99	17.51	15.35	14.8	14.82	11.99	10.06
257	26.14	22.67	22.98	18.58	17.04	14.77	14.18	14.42	11.45	9.79
258	25.55	21.96	22.03	17.94	16.43	14.36	13.59	13.88	10.95	9.38
259	25.3	21.24	21.57	17.63	16.1	13.99	13.46	13.56	10.49	8.91
260	26.12	21.2	22.52	18.07	16.22	14.4	13.64	13.68	10.58	8.56
261	27.11	21.86	23.28	18.51	16.55	14.7	13.91	13.76	10.8	8.5
262	27.87	22.51	23.74	18.63	16.75	14.7	13.77	13.79	10.66	8.53
263	27.82	23.14	23.65	18.74	16.9	14.64	13.8	13.85	10.69	8.59
264	27.31	22.88	23.59	18.66	16.75	14.57	13.68	13.88	10.72	8.56
265	26.63	22.67	23.1	18.6	16.75	14.73	13.77	13.85	10.86	8.62
266	26.7	22.2	23.19	18.46	16.67	14.57	13.87	13.88	10.95	8.65
267	27.39	22.33	23.99	18.62	17.51	14.75	13.89	14.14	10.89	8.79



Window 2 (LIP1 slope at the Chasm, see Figure 3-2 in main text for location)

**Table C4. POI slope surface temperatures (in degrees Celsius) in Window 2 for all times of the survey on August 2 to August 3, 2015.**

Time	20:05	21:05	22:05	23:05	00:05	01:05	02:05	03:05	04:05	05:05
Point 1	28.1	24.3	25.8	20.1	18.4	16.6	15.5	15.1	12.7	10.7
Point 2	28	23.8	25.6	20.1	18.8	17	16.3	15.9	13.6	11.9
Point 3	25.1	21.7	22.6	19.2	17.7	16.2	15.8	14.9	13.1	11.6

**Table C5. Slope surface temperatures (in degrees Celsius) along Column 155 in Window 2 for all times of the survey on August 2 to August 3, 2015.**

Pixel Count	20:05	21:05	22:05	23:05	00:05	01:05	02:05	03:05	04:05	05:05
1	27.8	23.69	25.06	19.42	17.96	17.31	15.32	15.88	13.26	9.85
2	27.98	23.67	25	19.37	17.98	17.08	15.23	15.8	13.26	10.12
3	28.03	23.67	25.09	19.37	17.78	16.95	15.28	15.65	13.01	10.24
4	27.98	23.67	25	19.21	17.57	16.97	15.41	15.65	12.95	10.26
5	28.05	23.67	24.97	19.35	17.8	16.93	15.39	15.65	13.26	10.18
6	28.13	23.71	24.97	19.32	17.84	16.95	15.53	15.68	13.68	10.56
7	28	23.49	24.75	19.4	17.82	17.05	15.68	15.65	13.52	10.47
8	27.77	23.35	24.66	19.45	17.88	17.03	15.53	15.62	13.2	9.97
9	27.49	23.24	24.51	19.54	18.14	17.08	15.16	15.68	12.89	9.62
10	27.29	23.1	24.08	19.65	18.1	17.14	14.98	15.68	13.04	9.41
11	27.36	23.18	24.08	19.68	18.08	16.86	14.93	15.48	13.06	9.47
12	27.65	23.31	24.54	19.54	17.92	16.9	15.12	15.42	13.26	9.82
13	27.67	23.31	24.6	19.48	17.86	17.1	15.25	15.48	13.23	9.91
14	27.57	23.35	24.66	19.4	17.84	16.8	15.23	15.48	12.95	9.68
15	27.39	23.29	24.66	19.31	17.45	16.84	15.05	15.54	12.67	9.44
16	27.03	22.92	23.87	19.2	17.75	16.9	15.03	15.34	12.5	9.21
17	26.7	22.63	23.19	19.16	17.49	16.21	14.5	14.68	12.1	8.76
18	26.96	23.04	23.68	18.98	16.82	15.83	14.18	14.19	11.85	9.03
19	27.65	23.59	24.75	18.95	16.76	15.93	14.75	14.68	12.89	9.88
20	27.9	23.67	24.97	18.99	17.25	16.8	15.57	15.51	13.88	10.41
21	27.8	23.51	24.69	19.16	17.49	16.77	15.5	15.71	13.43	10.06
22	27.65	23.49	24.72	19.16	17.43	16.56	15.34	15.51	13.12	10
23	27.39	23.27	24.42	19.2	17.43	16.84	15.21	15.42	13.01	9.74
24	27.06	22.96	23.74	19.13	17.61	16.58	14.98	15.14	12.75	9.68
25	26.96	23	23.8	19.05	17.31	16.08	14.62	14.77	12.16	9.26
26	27.11	23.22	24.2	18.93	16.94	16.28	14.62	14.94	12.44	9.32
27	27.14	23.22	24.2	18.99	17.43	16.84	14.91	15.42	12.5	9.5
28	27.14	23.2	24.14	19.1	17.53	16.69	14.8	15.4	12.64	9.38
29	27.44	23.41	24.57	19.16	17.45	16.43	14.84	15.34	12.81	9.53
30	27.77	23.65	24.84	19.23	17.53	17.08	15.37	15.68	13.37	10.03

Pixel Count	20:05	21:05	22:05	23:05	00:05	01:05	02:05	03:05	04:05	05:05
31	27.95	23.88	25.18	19.18	17.69	17.01	15.41	16.03	13.49	10.35
32	28.13	23.98	25.49	19.1	17.47	17.34	15.82	16.23	13.8	10.47
33	28.28	24	25.58	19.24	18	17.21	15.89	16.4	13.63	10.79
34	28.33	24	25.7	19.23	17.63	17.23	15.93	16.37	14.05	11
35	28.36	23.94	25.52	19.35	17.76	17.12	16.07	16.25	13.85	10.82
36	28.46	23.86	25.3	19.48	17.9	17.25	16.05	16.14	13.83	11.06
37	28.54	23.86	25.3	19.42	17.88	17.05	15.89	16.03	13.97	11.09
38	28.61	23.88	25.33	19.4	17.71	17.14	16	16	14.05	11.38
39	28.46	23.78	25.24	19.42	17.71	17.18	16.16	16.08	14.05	10.97
40	28.36	23.84	25.33	19.34	17.76	16.86	15.8	16.03	13.77	10.79
41	28.46	23.9	25.43	19.23	17.69	17.05	15.84	16.14	13.94	11.09
42	28.44	24	25.21	19.35	17.86	17.4	16.16	16.31	14.31	11.18
43	28.36	23.82	25.12	19.57	18.12	17.46	16.09	16.45	14	10.88
44	28.31	23.71	25.12	19.82	18.49	17.59	16.09	16.6	14.05	10.74
45	28.26	23.75	25.09	19.89	18.63	17.55	15.98	16.68	13.91	10.79
46	28.33	23.78	25.03	19.82	18.45	17.7	16.05	16.63	13.88	10.97
47	28.54	23.88	25.18	19.46	18.06	17.25	15.89	16.45	14.05	11.09
48	28.61	23.98	25.4	19.4	17.8	17.21	16.07	16.31	14.16	11.21
49	28.74	24.12	25.61	19.34	17.86	17.23	16.14	16.34	14.14	11.24
50	28.97	24.39	26.01	19.31	17.96	17.31	16.28	16.6	14.39	11.65
51	29.23	24.55	26.37	19.4	18.12	17.87	16.62	17.03	14.84	11.82
52	29.3	24.47	26.28	19.49	18.25	17.9	16.87	17.37	14.96	11.97
53	29.05	24.25	25.85	19.54	18.35	17.87	16.84	17.17	14.96	11.68
54	28.66	24.08	25.58	19.45	18.16	17.68	16.55	16.77	14.42	11.41
55	28.54	24	25.49	19.49	18.06	17.25	16.3	16.4	13.83	11.35
56	28.61	24.06	25.55	19.64	17.94	17.38	16.19	16.4	14.11	11.24
57	28.79	24.18	25.73	19.53	18.08	17.62	16.21	16.63	14.14	11.29
58	28.92	24.22	25.82	19.45	17.92	17.38	16.41	16.86	14.39	11.74
59	28.95	24.2	25.85	19.42	18.12	17.59	16.57	16.83	14.7	11.71
60	28.97	24.35	26.19	19.32	17.94	17.59	16.59	16.77	14.7	11.71
61	29.07	24.63	26.47	19.38	18	17.51	16.62	17.06	14.73	11.82
62	29.17	24.67	26.53	19.4	18.2	17.94	16.82	17.31	14.7	11.97
63	29.17	24.59	26.59	19.42	18.35	17.94	16.84	17.46	15.12	11.94
64	28.97	24.39	26.22	19.42	18.2	17.85	16.82	17.31	15.07	11.76
65	28.64	24.18	25.7	19.46	18.41	17.7	16.57	17.06	14.48	11.24
66	28.56	24.2	25.73	19.48	18.16	17.34	16.32	16.83	13.97	11.15
67	28.87	24.33	26.01	19.54	18.33	17.57	16.32	16.86	14.59	11.65
68	29.15	24.53	26.25	19.73	18.43	17.64	16.62	17.08	14.87	12.03
69	29.3	24.61	26.5	19.62	18.47	17.85	16.78	17.34	15.04	12.21
70	29.2	24.49	26.31	19.56	18.29	18	16.91	17.51	15.29	12.18

Pixel Count	20:05	21:05	22:05	23:05	00:05	01:05	02:05	03:05	04:05	05:05
71	29.02	24.29	25.95	19.62	18.53	17.9	16.98	17.31	15.04	11.97
72	28.92	24.27	25.85	19.59	18.51	17.42	16.64	16.88	14.59	11.82
73	28.95	24.39	26.04	19.62	18.25	17.49	16.62	16.8	14.62	11.82
74	28.97	24.35	26.13	19.64	18.12	17.59	16.78	16.94	14.67	11.85
75	28.87	24.22	25.95	19.49	18.16	17.59	16.78	16.97	14.67	11.76
76	28.79	24.12	25.7	19.48	18.25	17.57	16.59	16.74	14.5	11.71
77	28.79	24.25	25.92	19.59	18.2	17.44	16.39	16.71	14.5	11.74
78	28.97	24.45	26.31	19.73	18.29	17.51	16.59	17	14.62	11.76
79	29.07	24.61	26.59	19.78	18.51	17.9	16.71	17.28	14.96	11.76
80	29.07	24.59	26.56	19.71	18.47	17.9	16.87	17.4	14.76	11.82
81	29.07	24.49	26.31	19.79	18.61	17.96	16.87	17.37	15.1	11.94
82	29.05	24.41	26.19	19.81	18.76	17.94	16.78	17.31	15.04	11.91
83	28.87	24.22	25.88	19.79	18.61	17.98	16.84	17.26	15.12	11.65
84	28.61	24.08	25.67	19.76	18.73	17.94	16.73	17.08	14.9	11.21
85	28.61	24.08	25.7	19.67	18.73	17.72	16.32	16.97	14.62	11.29
86	28.66	24.2	25.79	19.71	18.47	18	16.59	17	14.98	11.53
87	28.77	24.35	25.98	19.7	18.45	18	16.55	17.08	14.62	11.21
88	28.87	24.39	26.1	19.54	18.61	18.05	16.48	17.28	14.53	11.38
89	28.69	24.2	25.85	19.62	18.55	18.18	16.82	17.34	15.1	11.62
90	28.44	24.1	25.61	19.62	18.18	18	16.57	17.08	14.64	10.97
91	28.41	24.18	25.67	19.49	18.25	17.81	16.3	16.86	14.11	10.94
92	28.61	24.18	25.82	19.51	18.37	17.66	16.39	16.91	14.39	11.15
93	28.79	24.16	25.98	19.42	18.39	18	16.75	17.06	15.15	11.41
94	28.77	24.2	25.95	19.31	18.37	17.68	16.66	17.06	14.79	11.47
95	28.74	24.22	25.82	19.34	18.2	17.7	16.69	16.94	14.84	11.56
96	28.64	24.14	25.79	19.16	18.02	17.62	16.62	16.88	14.9	11.62
97	28.49	24.02	25.61	19.05	18	17.49	16.55	16.71	14.48	11.38
98	28.49	23.96	25.52	19.09	17.94	17.29	16.44	16.51	14.39	11
99	28.51	23.94	25.55	19.12	17.96	17.44	16.34	16.43	14.33	11
100	28.51	24.04	25.82	19.23	18.04	17.29	16.12	16.48	14.22	11.15
101	28.66	24.25	26.16	19.18	17.94	17.49	16.28	16.68	14.42	11.26
102	28.82	24.41	26.37	19.24	17.98	17.64	16.5	16.97	14.5	11.59
103	28.95	24.45	26.4	19.16	18.18	17.59	16.64	17.11	14.96	11.71
104	28.92	24.39	26.31	19.12	18.1	17.53	16.73	17.03	14.62	11.68
105	28.87	24.39	26.4	19.05	18.04	17.66	16.62	16.91	14.79	11.68
106	28.87	24.47	26.47	19.04	17.94	17.36	16.48	16.86	14.45	11.47
107	28.87	24.53	26.56	18.93	17.8	17.16	16.62	16.8	14.67	11.76
108	28.77	24.65	26.68	18.85	17.69	17.31	16.66	16.68	14.7	11.79
109	28.82	24.61	26.77	18.87	17.47	17.16	16.5	16.65	14.39	11.74
110	28.74	24.22	26.19	18.65	17.53	16.99	16.71	16.54	14.42	11.82

Pixel Count	20:05	21:05	22:05	23:05	00:05	01:05	02:05	03:05	04:05	05:05
111	28.28	23.82	25.43	18.6	17.35	16.99	16.3	16.17	14.08	11
112	28.13	23.8	25.24	18.71	17.33	16.84	15.68	15.88	13.49	10.79
113	28.38	23.9	25.43	19.09	17.69	17.25	15.89	16.14	14.14	11.32
114	28.44	23.88	25.4	19.38	18.25	17.62	16.39	16.6	14.5	11.15
115	28.21	23.94	25.4	19.31	18.24	17.49	16.25	16.74	14.28	10.71
116	28.05	24.14	25.7	19.29	18.27	17.77	16.19	16.8	14.25	10.56
117	28.28	24.31	25.95	19.16	18.18	17.9	16.21	16.97	14.28	10.88
118	28.44	24.22	25.88	19.07	18.22	17.79	16.39	17.08	14.73	11.29
119	28.1	23.94	25.61	19.09	18.16	17.79	16.57	16.8	14.59	11.12
120	27.77	23.67	25.24	19.02	17.96	17.38	16.03	16.4	13.8	10.62
121	27.7	23.55	25	18.9	17.63	16.9	15.64	16	13.68	10.62
122	27.87	23.82	25.36	18.85	17.35	16.95	15.62	15.74	13.74	10.56
123	28.59	24.55	26.37	18.91	17.37	16.62	15.57	15.88	13.63	11.18
124	29.17	24.92	27.08	18.84	17.29	17.23	16.41	16.65	14.7	12.21
125	29.1	24.76	27.02	18.85	18.02	17.68	16.98	17.28	15.12	12.15
126	28.89	24.57	26.68	19.09	17.94	17.49	16.64	17.06	14.64	11.71
127	28.72	24.49	26.47	19.21	17.96	17.34	16.34	16.74	14.48	11.65
128	28.61	24.55	26.44	19.24	18.04	17.36	16.34	16.71	14.31	11.59
129	28.72	24.69	26.65	19.13	17.96	17.44	16.25	16.77	14.14	11.47
130	28.92	24.71	26.8	19.23	17.88	17.42	16.41	16.74	14.45	11.76
131	28.95	24.61	26.62	19.05	17.86	17.44	16.55	16.68	14.53	11.76
132	28.77	24.55	26.5	18.9	17.86	17.12	16.39	16.51	14.39	11.56
133	28.72	24.55	26.53	18.98	17.71	17.14	16.37	16.48	14.33	11.59
134	28.79	24.35	26.28	19.09	17.98	17.21	16.28	16.54	14.33	11.68
135	28.49	23.92	25.58	19.12	17.92	17.42	16.3	16.45	14.39	11.29
136	27.98	23.71	25.15	19.43	18	17.25	15.73	16.08	13.68	10.62
137	27.85	23.82	25.21	19.65	18.08	16.97	15.62	15.85	13.4	10.59
138	27.9	23.96	25.36	19.67	18.31	17.34	15.82	16.05	13.68	10.68
139	27.87	23.8	25.3	19.71	18.2	17.25	15.73	16.34	13.85	10.76
140	27.49	23.59	25	19.48	18.27	17.18	15.66	16.2	13.57	10.24
141	27.14	23.43	24.81	19.16	17.8	16.84	15.28	15.77	13.01	9.94
142	27.39	23.61	24.72	19.16	17.59	16.86	15.12	15.6	13.09	10.15
143	28.03	23.96	25.21	19.43	17.94	17.01	15.34	16	13.54	10.71
144	28.61	24.35	25.76	19.64	18.25	17.36	15.96	16.77	14.36	11.56
145	28.89	24.27	25.82	19.82	18.71	18.15	16.57	17.46	15.07	12.18
146	28.56	23.96	25.43	19.78	18.88	18.18	16.64	17.49	15.27	11.62
147	28.1	23.9	25.3	19.76	18.71	17.85	16.12	16.97	14.25	11.06
148	28.05	24.04	25.43	19.79	18.65	17.83	15.96	16.63	14.25	11.06
149	28.36	24.27	25.76	19.81	18.59	17.87	16.05	16.77	14.39	11.15
150	28.74	24.55	26.19	19.82	18.67	17.77	16.32	17.08	14.62	11.62

Pixel Count	20:05	21:05	22:05	23:05	00:05	01:05	02:05	03:05	04:05	05:05
151	28.95	24.63	26.44	19.75	18.57	17.81	16.59	17.37	15.12	12
152	28.84	24.53	26.31	19.57	18.67	18.07	16.82	17.28	15.18	11.82
153	28.72	24.31	26.1	19.43	18.39	17.81	16.55	17.06	14.76	11.79
154	28.56	24.22	25.85	19.48	18.49	17.75	16.3	16.86	14.59	11.38
155	28.33	24.25	25.76	19.62	18.53	17.64	16.14	16.88	14.56	11.32
156	28.26	24.18	25.64	19.71	18.67	17.77	16.28	16.97	14.25	11.32
157	28.31	24.12	25.49	19.89	18.69	18	16.21	17	14.59	11.35
158	28.13	24.16	25.49	19.98	18.86	18.05	16.3	16.97	14.5	11.24
159	28.03	24.29	25.88	19.95	18.98	17.92	16.16	17.06	14.5	11.09
160	28.31	24.27	25.95	20	18.88	18.26	16.28	17.46	14.48	11.41
161	28.33	23.92	25.33	20.09	19.49	18.48	16.71	17.51	15.66	11.38
162	27.85	23.92	25.15	19.79	19.22	18.11	16.03	16.97	14.36	10.65
163	27.75	23.98	25.43	19.54	18.24	17.46	15.89	16.65	14	10.91
164	27.65	23.59	25.15	19.51	18.37	17.72	16.14	16.74	14.59	10.59
165	27.06	23.25	24.63	19.34	18.45	17.72	15.46	16.31	13.71	9.59
166	26.96	23.57	24.72	19.09	17.84	17.03	14.96	15.74	12.81	9.82
167	27.44	23.84	25.21	19.07	17.59	17.21	15.41	15.97	13.63	10.47
168	27.77	23.9	25.46	19.23	18.04	17.27	15.91	16.51	14.14	10.91
169	27.67	23.96	25.49	19.29	18.18	17.7	16.09	16.86	14.45	10.76
170	27.57	23.92	25.58	19.32	18.37	17.83	16.07	16.97	14.48	10.85
171	27.65	23.88	25.55	19.32	18.27	17.79	16	16.91	14.22	10.76
172	27.67	23.92	25.55	19.34	18.25	17.64	15.89	16.71	14.05	10.65
173	27.93	24.16	25.73	19.15	18.14	17.66	15.93	16.71	14.02	10.97
174	28.38	24.29	25.82	19.29	18.02	17.64	16.5	17.06	14.76	11.62
175	28.44	24.29	25.92	19.31	18.25	17.66	16.66	17.11	14.87	11.65
176	28.41	24.35	26.01	19.24	18.08	17.7	16.55	17.08	14.96	11.53
177	28.51	24.33	26.04	19.27	18.2	17.7	16.59	17.2	15.04	11.79
178	28.46	24.31	26.07	19.34	18.2	17.85	16.44	17.26	15.04	11.62
179	28.44	24.41	26.07	19.35	18.24	17.81	16.57	17.2	14.93	11.59
180	28.56	24.43	26.04	19.2	18.22	17.55	16.66	17.26	15.12	11.76
181	28.56	24.37	25.92	19.27	18.22	17.72	16.75	17.31	15.27	11.88
182	28.56	24.24	25.73	19.53	18.35	17.79	16.78	17.28	14.9	11.68
183	28.46	24.16	25.55	19.4	18.02	17.53	16.57	17.11	14.76	11.65
184	28.18	23.96	25.36	19.32	18.1	17.38	16.48	16.91	14.42	11.32
185	27.8	23.82	25.15	19.4	18.08	17.38	16.16	16.63	14.33	10.85
186	27.62	23.82	25.18	19.24	17.96	17.25	15.87	16.37	14.05	10.74
187	27.7	23.92	25.36	19.16	17.86	17.03	15.98	16.25	13.97	10.85
188	27.87	24.41	26.04	19.18	17.76	17.25	16	16.37	13.83	10.94
189	28.69	25.33	26.99	19.09	17.78	17.21	16.28	16.74	14.28	11.97
190	30.02	25.67	27.2	18.84	17.71	17.51	17.37	17.28	15.69	12.82

Pixel Count	20:05	21:05	22:05	23:05	00:05	01:05	02:05	03:05	04:05	05:05
191	30.3	25.22	26.92	18.93	18.1	18.44	17.8	17.71	15.97	13
192	29.48	24.55	26.13	19.2	18.14	17.94	17.69	17.77	15.97	12.91
193	28.64	24.02	25.27	19.4	18.1	17.64	17.07	17.43	15.07	12.03
194	28.1	23.78	24.94	19.75	18.33	17.51	16.53	17	14.53	11.29
195	27.82	23.73	24.91	19.92	18.22	17.31	16.05	16.77	14.11	10.97
196	27.67	23.76	24.97	19.87	18.57	17.25	16	16.88	13.97	10.82
197	27.59	23.76	25.03	19.79	18.43	17.81	16	17.08	14.16	10.74
198	27.65	23.9	25.21	19.67	18.57	17.75	16.07	17.14	14.16	10.88
199	28.03	24.31	25.82	19.54	18.2	17.94	16.07	17.2	14.42	11.12
200	28.59	24.57	26.31	19.35	18.33	17.98	16.53	17.46	15.04	12.15
201	28.84	24.51	26.22	19.31	18.59	18.26	17.32	17.74	16	12.74
202	28.74	24.53	26.07	19.49	18.8	18.28	17.14	17.69	15.89	12.15
203	28.84	24.55	26.28	19.4	18.41	17.72	17.03	17.49	15.21	12.24
204	29	24.63	26.34	19.29	18.08	17.64	17.05	17.37	15.27	12.38
205	29.07	24.61	26.4	19.07	17.82	17.53	17.07	17.37	15.1	12.59
206	29	24.59	26.47	19.29	17.98	17.81	17.16	17.51	15.46	12.44
207	28.84	24.45	26.31	19.7	18.78	18.22	17.19	17.66	15.44	11.91
208	28.77	24.57	26.37	19.93	18.94	18.05	16.91	17.6	14.87	11.88
209	28.92	24.75	26.77	19.85	18.86	18	16.89	17.54	15.12	12.21
210	29.23	24.96	27.11	19.79	18.88	18.33	17.16	17.71	15.44	12.5
211	29.38	25.04	27.2	19.82	18.92	18.48	17.37	17.77	15.97	12.76
212	29.38	25.04	27.2	19.84	19.1	18.46	17.5	17.77	15.77	12.62
213	29.35	25.02	27.14	19.92	19.14	18.48	17.5	17.77	15.92	12.68
214	29.35	24.96	27.14	19.92	19.02	18.48	17.46	17.77	15.75	12.59
215	29.33	24.98	27.2	19.85	19.08	18.48	17.48	17.77	15.86	12.62
216	29.33	25.04	27.2	19.84	19.2	18.48	17.41	17.77	15.89	12.62
217	29.4	25.1	27.2	19.76	19	18.35	17.46	17.8	16	12.68
218	29.48	25.14	27.2	19.7	18.8	18.39	17.55	17.77	15.97	12.79
219	29.53	25.14	27.2	19.7	18.76	18.44	17.46	17.77	15.92	12.76
220	29.51	25.1	27.17	19.56	18.71	18.31	17.55	17.77	15.94	12.82
221	29.38	25.06	27.17	19.35	18.61	18.41	17.5	17.77	15.89	12.79
222	29.33	25.04	27.14	19.35	18.25	18.05	17.41	17.77	15.94	12.68
223	29.35	25.06	27.17	19.38	18.59	17.98	17.21	17.77	15.41	12.62
224	29.38	24.96	27.14	19.37	17.98	18.05	17.21	17.8	15.55	12.59
225	29.23	24.84	26.99	19.4	18.24	17.9	17.32	17.77	15.41	12.47
226	29.07	24.84	26.89	19.48	18.27	17.98	17.12	17.63	15.27	12.44
227	29	24.76	27.02	19.49	18.2	17.75	17	17.57	15.15	12.29
228	29.02	24.73	26.92	19.51	18.57	18.05	17	17.63	15.35	12.15
229	28.97	24.78	26.86	19.6	18.49	18.03	17.07	17.71	15.35	12.03
230	28.97	24.84	26.89	19.78	18.75	18.15	17.05	17.69	15.24	12.12

Pixel Count	20:05	21:05	22:05	23:05	00:05	01:05	02:05	03:05	04:05	05:05
231	29	24.86	27.02	19.9	18.96	18.2	17.14	17.74	15.49	12.26
232	29.1	24.94	27.08	19.84	18.88	18.26	17.12	17.74	15.41	12.35
233	29.25	25	27.14	19.82	18.73	18.13	17.21	17.74	15.49	12.35
234	29.38	25.08	27.17	19.65	18.73	18.11	17.19	17.74	15.29	12.68
235	29.45	25.12	27.14	19.49	18.59	18	17.32	17.74	15.52	12.56
236	29.38	25.08	27.17	19.49	18.43	17.94	17.39	17.74	15.55	12.56
237	29.4	25.1	27.2	19.43	18.41	18	17.32	17.77	15.6	12.5
238	29.45	25.12	27.17	19.4	18.35	18	17.25	17.77	15.49	12.47
239	29.53	25.12	27.17	19.32	18.29	18.09	17.3	17.74	15.52	12.82
240	29.56	25.04	27.2	19.27	18.12	18.09	17.46	17.71	15.86	12.71
241	29.43	24.88	27.17	19.29	18.37	17.87	17.35	17.77	15.63	12.47
242	29.25	24.92	27.17	19.31	18.1	17.87	17.14	17.66	15.27	12.35
243	29.23	24.9	27.17	19.2	18.14	17.94	17	17.54	15.38	12.24

*Window 3 (LIP1 slope at the Chasm, see Figure 3-2 in main text for location)*

**Table C6. POI slope surface temperatures (in degrees Celsius) in Window 3 for all times of the survey on August 2 to August 3, 2015.**

Time	20:05	21:05	22:05	23:05	00:05	01:05	02:05	03:05	04:05	05:05
Point 1	26.6	22.8	23.3	18.8	16.8	14.8	14.6	12.6	11.6	8.4
Point 2	25.4	22.6	23.5	19.1	17.9	15.6	15.5	14.6	12.9	10.8
Point 3	28.1	24.1	25.6	20	18.5	16	15.5	13.9	12.1	10.2

**Table C7. Slope surface temperatures (in degrees Celsius) along Column 256 in Window 3 for all times of the survey on August 2 to August 3, 2015.**

Pixel Count	20:05	21:05	22:05	23:05	00:05	01:05	02:05	03:05	04:05	05:05
1	28.69	24.75	26.77	19.65	18.71	18.09	16.5	17.23	14.93	11.29
2	28.64	24.76	26.74	19.64	18.67	18.07	16.55	17.28	14.98	11.24
3	28.64	24.76	26.74	19.64	18.61	17.96	16.46	17.17	14.9	11.26
4	28.61	24.67	26.83	19.7	18.59	17.9	16.41	17	14.81	11.03
5	28.64	24.67	26.56	19.65	18.55	17.98	16.44	16.97	14.9	11.09
6	28.59	24.69	26.13	19.59	18.51	17.98	16.48	16.91	14.96	11.24
7	28.38	24.67	25.88	19.57	18.41	17.83	16.25	16.68	14.73	11.06
8	28.26	24.55	26.1	19.53	18.31	17.72	16.14	16.68	14.45	10.85
9	28.38	24.49	26.16	19.49	18.31	17.75	16.09	16.74	14.42	10.85
10	28.28	24.45	26.25	19.45	18.24	17.64	16.14	16.71	14.56	10.88
11	28.23	24.53	26.1	19.4	18.1	17.57	16.25	16.6	14.53	10.76
12	28.21	24.55	25.92	19.34	18.02	17.49	16.19	16.45	14.31	10.85
13	28.05	24.47	25.82	19.31	17.92	17.29	15.96	16.34	14.28	10.91
14	27.98	24.33	25.61	19.2	17.88	17.25	15.75	16.2	14.28	10.65

Pixel Count	20:05	21:05	22:05	23:05	00:05	01:05	02:05	03:05	04:05	05:05
15	27.98	24.24	25.43	19.15	17.88	17.34	15.75	16.14	14.19	10.41
16	27.93	24.22	25.03	19.07	17.84	17.27	15.84	16.23	14.08	10.44
17	27.85	24.27	24.88	19.01	17.78	17.14	15.73	16.11	14	10.32
18	27.87	24.16	25.06	19.05	17.82	17.16	15.48	15.94	14.08	10.26
19	28.08	24.02	25.27	19.04	17.94	17.29	15.53	16.2	14.28	10.35
20	28.13	24.18	25.49	18.96	18.02	17.36	15.68	16.4	14.28	10.68
21	27.75	24.14	25.7	19.07	17.96	17.12	15.43	16.05	13.94	10.38
22	27.44	23.88	25.7	19.23	17.76	17.05	15.39	15.71	13.77	9.82
23	27.59	23.88	25.49	19.16	17.9	17.27	15.59	16	14.02	9.79
24	27.98	24.08	25.55	19.23	18.12	17.55	15.75	16.43	14.33	10.15
25	28.26	24.25	25.67	19.29	18.18	17.59	15.89	16.71	14.48	10.32
26	28.36	24.29	25.79	19.23	18.2	17.59	15.93	16.77	14.53	10.94
27	28.15	24.31	25.95	19.13	18.16	17.51	15.82	16.57	14.36	11
28	27.7	24.18	25.98	19.2	18.06	17.29	15.48	16.14	13.94	10.41
29	27.34	23.88	25.85	19.2	18	17.16	15.21	15.88	13.66	9.85
30	27.29	23.75	25.73	19.21	18.04	17.23	15.28	15.94	13.8	9.76
31	27.44	23.82	25.49	19.21	18.02	17.4	15.57	16.14	13.94	9.91
32	27.8	24	25.67	19.18	17.92	17.57	15.93	16.48	14.31	10.03
33	28.28	24.29	25.82	19.13	17.98	17.81	16.34	17.03	14.96	10.85
34	28.59	24.69	25.79	19.04	17.96	17.92	16.71	17.34	15.21	11.29
35	28.46	25	25.7	19.01	17.71	17.59	16.71	17.11	14.93	11.5
36	28.33	24.96	25.55	18.87	17.49	17.25	16.39	16.68	14.59	11.06
37	28.77	24.71	25.61	18.65	17.55	17.27	16.3	16.68	14.64	11.09
38	29.25	24.86	25.46	18.54	17.69	17.36	16.48	17	14.96	11.71
39	29.2	25.1	25.09	18.49	17.75	17.31	16.48	16.94	14.93	11.62
40	29.02	25.06	24.91	18.58	17.84	17.4	16.48	16.86	14.84	11.41
41	29.05	25.04	25.09	18.76	17.92	17.57	16.59	16.97	14.96	11.44
42	29	25.06	25.33	18.87	18	17.59	16.55	17.06	14.84	11.26
43	28.95	25.02	25.36	18.93	18.14	17.51	16.39	17.06	14.84	11.21
44	28.95	24.92	25.33	18.98	18.22	17.68	16.37	16.94	14.96	11.26
45	28.79	24.86	25.21	19.01	18.14	17.75	16.32	17	14.93	11.26
46	28.61	24.82	25.21	19.15	18.18	17.64	16.25	17.08	14.81	11.18
47	28.56	24.76	25.24	19.16	18.18	17.64	16.23	16.91	14.59	10.94
48	28.36	24.63	25.27	19.18	18.14	17.59	16.05	16.68	14.5	10.56
49	28.21	24.53	25.49	19.23	18.2	17.49	15.91	16.54	14.25	10.44
50	27.95	24.35	25.58	19.34	18.18	17.42	15.71	16.34	13.94	10.18
51	27.77	24.16	25.58	19.43	18.16	17.36	15.57	16.08	13.94	10.5
52	28.05	24.18	26.13	19.4	18.27	17.51	15.75	16.43	14.33	10.97
53	28.44	24.35	26.25	19.32	18.59	17.87	16	17	14.7	11.09
54	28.33	24.49	26.13	19.42	18.76	18.03	15.98	17.08	14.76	10.88



Pixel Count	20:05	21:05	22:05	23:05	00:05	01:05	02:05	03:05	04:05	05:05
55	28.13	24.41	25.98	19.65	18.71	17.87	15.84	17.03	14.64	10.97
56	28.28	24.37	26.22	19.71	18.61	17.77	15.93	17.14	14.67	11.12
57	28.44	24.43	26.47	19.7	18.63	17.92	16.09	17.2	14.84	11.32
58	28.51	24.53	26.68	19.71	18.67	18.03	16.25	17.17	14.98	11.44
59	28.61	24.59	26.59	19.75	18.57	18.03	16.34	17.2	14.84	11.41
60	28.64	24.61	26.56	19.68	18.51	17.94	16.34	17.26	14.79	11.59
61	28.66	24.65	26.71	19.54	18.49	17.96	16.37	17.2	14.9	11.71
62	28.61	24.65	26.83	19.49	18.43	17.96	16.3	17.11	14.9	11.41
63	28.61	24.59	26.74	19.53	18.41	17.9	16.23	17.06	14.79	11.56
64	28.74	24.61	26.83	19.46	18.35	17.83	16.3	17.14	14.87	11.82
65	28.84	24.71	26.71	19.43	18.29	17.92	16.44	17.37	15.12	11.97
66	28.92	24.84	26.68	19.32	18.29	18.03	16.55	17.4	15.12	11.91
67	28.89	24.9	26.71	19.27	18.24	17.98	16.57	17.26	14.98	11.74
68	28.79	24.88	26.56	19.2	18.08	17.9	16.44	17.26	14.93	11.68
69	28.69	24.86	26.47	19.13	17.94	17.85	16.39	17.2	14.96	11.71
70	28.77	24.82	26.56	19.13	18	17.72	16.32	17.03	15.04	11.91
71	28.95	24.82	26.68	19.1	18.08	17.72	16.44	17.08	15.01	12.09
72	29.07	24.94	26.8	19.01	18.04	17.83	16.57	17.17	15.04	12.24
73	29.02	25.02	26.74	18.96	17.88	17.72	16.57	17.14	15.1	12.09
74	28.84	25.02	26.68	18.95	17.8	17.64	16.44	17	14.9	11.85
75	28.82	24.92	26.74	18.87	17.76	17.51	16.32	16.91	14.76	11.91
76	29.05	24.94	26.83	18.8	17.86	17.44	16.46	17	14.87	12.06
77	29.23	25.1	26.99	18.79	18	17.64	16.69	17.08	14.98	12
78	28.72	25.16	26.53	18.9	18.08	17.64	16.46	16.86	14.62	11.15
79	27.93	24.75	25.92	18.91	18.12	17.42	15.71	16.28	13.88	10.53
80	27.98	24.2	25.98	19.16	18.25	17.46	15.41	16.25	13.94	10.82
81	28.51	24.16	26.47	19.43	18.43	17.79	15.87	16.77	14.67	11.59
82	28.84	24.49	26.96	19.51	18.43	18.07	16.3	17.2	15.15	11.91
83	28.92	24.82	27.02	19.4	18.29	18	16.41	17.26	15.04	12.06
84	28.97	24.96	27.02	19.23	18.12	17.79	16.48	17.31	15.07	12.15
85	29.15	25	26.86	19.04	18.06	17.68	16.66	17.31	15.18	12.24
86	29.28	25.12	27.14	18.91	17.98	17.66	16.64	17.23	15.12	12.35
87	29.25	25.2	27.17	18.85	18.02	17.59	16.59	17.26	15.12	12.32
88	29.1	25.2	26.99	18.88	17.98	17.57	16.64	17.03	14.96	12.32
89	29.07	25.16	27.02	18.84	17.92	17.64	16.5	16.83	14.87	12.26
90	29.02	25.1	27.2	18.91	17.94	17.66	16.48	16.91	14.9	12.03
91	29	25.04	26.99	18.9	17.92	17.57	16.57	16.94	14.76	11.88
92	29.05	25	27.17	18.95	17.86	17.55	16.44	16.88	14.79	11.97
93	29.07	24.96	27.17	18.98	17.88	17.57	16.44	17	14.96	12.06
94	28.97	25.04	27.2	18.91	17.78	17.66	16.53	17	14.81	12.03

Pixel Count	20:05	21:05	22:05	23:05	00:05	01:05	02:05	03:05	04:05	05:05
95	28.44	25.04	27.14	18.84	17.59	17.44	16.46	16.63	14.5	11.44
96	27.7	24.8	27.2	18.73	17.43	17.34	16.12	16.11	14.05	11
97	27.44	24.51	26.68	18.69	17.47	17.29	15.82	15.97	13.71	10.91
98	27.52	24.49	26.28	18.95	17.71	17.31	15.8	15.97	13.71	10.68
99	27.42	24.37	26.01	19.24	17.78	17.21	15.5	15.71	13.54	10.18
100	27.42	23.98	26.19	19.18	17.65	16.84	15.09	15.54	13.37	10.12
101	27.95	23.88	26.65	19.07	17.59	16.86	15.25	15.85	13.8	10.74
102	28.51	24.12	26.83	18.88	17.78	17.27	15.78	16.37	14.39	11.32
103	28.79	24.41	27.14	18.87	17.94	17.38	16.14	16.71	14.7	11.68
104	28.82	24.67	26.89	18.77	17.96	17.44	16.21	16.86	14.7	11.71
105	28.77	24.76	26.86	18.77	17.96	17.53	16.32	16.8	14.76	11.71
106	28.79	24.78	26.77	18.84	17.94	17.49	16.46	16.71	14.84	11.91
107	28.87	24.82	26.8	18.79	17.94	17.51	16.53	16.88	14.9	12.09
108	28.97	24.88	26.65	18.9	17.92	17.62	16.53	17.08	14.98	12.09
109	29.02	24.94	26.74	18.88	18	17.68	16.55	17.2	15.01	12
110	29.02	25	26.8	18.85	18.12	17.66	16.53	17.2	14.93	12.06
111	28.92	25	26.44	18.98	18.1	17.68	16.46	17.03	14.67	11.94
112	28.74	24.98	26.28	19.02	17.96	17.7	16.44	16.91	14.56	11.88
113	28.72	24.94	26.01	18.95	17.96	17.64	16.46	16.8	14.48	11.85
114	28.77	24.86	25.79	18.93	18	17.51	16.37	16.74	14.45	11.76
115	28.79	24.78	25.67	18.91	17.96	17.49	16.3	16.77	14.33	11.65
116	28.69	24.75	26.19	18.96	17.98	17.49	16.28	16.57	14.36	11.5
117	28.56	24.71	26.37	18.88	17.92	17.44	16.28	16.48	14.64	11.59
118	28.64	24.67	26.44	18.85	17.9	17.46	16.21	16.68	14.62	11.74
119	28.77	24.76	25.98	18.82	17.88	17.44	16.3	16.83	14.31	11.74
120	28.77	24.88	25.88	18.79	17.86	17.36	16.3	16.6	14.14	11.59
121	28.64	24.82	26.07	18.74	17.78	17.16	16.25	16.31	14.16	11.41
122	28.44	24.75	26.13	18.69	17.71	17.03	16.16	16.17	14.11	11.26
123	28.28	24.61	26.28	18.76	17.75	17.16	16	16.11	14.08	10.97
124	28.31	24.41	26.34	18.79	17.73	17.29	15.96	16.25	14.14	10.91
125	28.36	24.35	26.28	18.77	17.73	17.36	15.96	16.45	14.28	11.32
126	28.36	24.47	26.22	18.79	17.71	17.46	16.14	16.54	14.33	11.59
127	28.28	24.57	26.04	18.8	17.53	17.57	16.28	16.45	14.14	11.53
128	28.26	24.61	26.13	18.73	17.41	17.46	16.23	16.4	13.97	11.47
129	28.26	24.65	26.31	18.62	17.37	17.42	16.09	16.23	13.83	11.35
130	28.23	24.65	26.07	18.65	17.35	17.14	15.91	15.94	13.54	11.03
131	28	24.47	26.37	18.57	17.33	16.88	15.73	15.82	13.4	10.53
132	27.67	24.16	25.98	18.55	17.49	16.95	15.5	15.97	13.6	10.35
133	27.72	23.98	24.91	18.8	17.98	17.27	15.43	16.28	14.08	10.47
134	27.75	24.02	24.6	19.26	18.51	17.79	15.53	16.68	14.14	10.38

Pixel Count	20:05	21:05	22:05	23:05	00:05	01:05	02:05	03:05	04:05	05:05
135	27.62	23.94	25.03	19.79	18.73	17.77	15.59	16.54	13.83	10.24
136	27.52	23.86	25.55	19.93	18.57	17.57	15.53	16.28	13.83	10.26
137	27.62	23.88	25.85	19.78	18.35	17.51	15.59	16.31	14	10.41
138	27.65	23.94	26.19	19.64	18.35	17.46	15.73	16.34	13.85	10.47
139	27.42	23.94	26.89	19.7	18.49	17.62	15.64	16.31	13.83	10.32
140	27.34	23.84	27.08	19.79	18.67	17.68	15.46	16.31	13.97	10.32
141	27.42	23.78	26.68	19.96	18.8	17.72	15.48	16.43	13.83	10.35
142	27.47	23.73	25.88	20.14	18.8	17.79	15.46	16.43	13.88	10.44
143	27.57	23.78	25.7	20.14	18.78	17.75	15.5	16.43	14.02	10.65
144	27.77	23.94	25.55	20.07	18.75	17.77	15.68	16.68	14.02	10.76
145	27.82	24.1	26.01	19.93	18.61	17.81	15.82	16.68	14.08	10.68
146	27.82	24.12	26.59	19.76	18.47	17.66	15.8	16.54	14.25	10.79
147	27.98	24.06	26.13	19.67	18.35	17.57	15.78	16.63	14.53	10.79
148	28.28	24.12	26.01	19.49	18.29	17.64	15.98	16.83	14.64	11.21
149	28.28	24.22	26.16	19.54	18.37	17.75	16.14	16.94	14.48	11.26
150	28.28	24.27	26.22	19.6	18.39	17.75	16.07	16.94	14.48	11.24
151	28.44	24.39	26.19	19.48	18.33	17.72	16.21	16.88	14.56	11.47
152	28.46	24.47	26.16	19.51	18.24	17.79	16.21	16.88	14.48	11.47
153	28.38	24.53	25.85	19.34	18.18	17.66	16.16	16.83	14.42	11.59
154	28.31	24.55	25.3	19.26	18.12	17.49	16.12	16.83	14.25	11.41
155	28.03	24.49	25.3	19.18	18.04	17.44	16	16.54	14.08	10.85
156	27.72	24.25	25.52	19.18	18.06	17.42	15.68	16.34	13.8	10.5
157	27.54	24.04	25.33	19.27	18.12	17.38	15.57	16.4	13.54	10.5
158	27.16	23.9	25.46	19.4	18.12	17.36	15.39	16	13.09	10.06
159	26.91	23.63	25.43	19.48	18.02	17.21	15.09	15.62	13.04	9.88
160	27.26	23.61	25.67	19.48	17.9	17.01	15.21	15.91	13.32	10.32
161	27.26	23.86	24.72	19.4	17.78	17.18	15.43	15.85	12.78	10.35
162	26.7	23.92	24.11	19.23	17.25	16.93	15.14	14.91	11.82	9.68
163	26.29	23.61	23.41	18.76	16.63	16.15	14.48	14.02	11.4	8.88
164	26.12	23.2	22.64	18.38	16.53	15.55	14	13.51	11.31	8.62
165	25.96	22.94	22.61	18.27	16.63	15.39	13.75	13.31	11.31	8.56
166	25.86	22.86	22.61	18.4	16.76	15.5	13.75	13.39	11.34	8.5
167	25.84	22.82	22.4	18.62	16.84	15.57	13.84	13.45	11.28	8.44
168	25.84	22.76	22.43	18.74	16.82	15.59	13.82	13.45	11.34	8.53
169	26.01	22.82	22.95	18.82	16.8	15.67	13.89	13.68	11.57	8.82
170	26.19	23	23.01	18.77	16.84	15.87	14.12	13.88	11.74	9
171	26.35	23.14	22.34	18.66	17	16.04	14.25	14.08	11.93	9.15
172	26.63	23.25	22.24	18.73	17.24	16.28	14.5	14.48	12.33	9.56
173	26.98	23.43	22.52	18.91	17.53	16.65	14.87	14.94	12.75	9.71
174	27.14	23.59	23.32	18.99	17.59	16.77	14.98	15.05	12.81	9.82

Pixel Count	20:05	21:05	22:05	23:05	00:05	01:05	02:05	03:05	04:05	05:05
175	27.03	23.65	23.65	18.93	17.51	16.65	15	14.94	12.61	9.68
176	26.8	23.61	23.35	18.96	17.37	16.49	14.87	14.77	12.44	9.59
177	26.65	23.51	23.32	18.84	17.22	16.41	14.64	14.54	12.3	9.47
178	26.52	23.41	23.38	18.77	17.18	16.26	14.59	14.42	12.13	9.41
179	26.29	23.33	23.44	18.76	17.08	16.13	14.46	14.19	11.68	9.03
180	25.96	23.12	23.8	18.73	16.9	16.08	14.16	13.88	11.26	8.74
181	25.96	22.94	23.74	18.66	16.75	15.98	13.98	13.91	11.4	8.82
182	26.24	22.96	23.47	18.63	16.8	16.08	14.18	14.11	11.71	9.06
183	26.6	23.18	23.35	18.68	16.88	16.08	14.37	14.34	12.16	9.41
184	26.83	23.41	23.04	18.6	16.98	16.19	14.68	14.62	12.36	9.85
185	26.7	23.61	22.64	18.54	17.12	16.41	14.91	14.68	12.13	9.82
186	26.4	23.59	22.64	18.46	17.02	16.45	14.75	14.57	11.91	9.5
187	26.24	23.41	22.98	18.52	17.14	16.36	14.52	14.48	12.02	9.21
188	26.35	23.25	23.35	18.8	17.43	16.19	14.52	14.62	12.24	9.44
189	26.52	23.29	23.07	18.96	17.57	16.28	14.71	14.97	12.24	9.68
190	26.7	23.43	22.83	19.12	17.43	16.6	14.75	15.17	12.53	9.79
191	27.21	23.61	22.7	18.9	17.33	16.58	14.96	15.45	12.98	10
192	27.29	23.76	22.83	18.71	17.39	16.52	15.12	15.57	12.89	9.91
193	26.98	23.75	23.22	18.79	17.31	16.49	14.98	14.91	12.44	9.59
194	26.42	23.51	23.62	18.76	17.2	16.36	14.57	14.14	11.74	9
195	25.94	23.14	23.38	18.66	17.2	16.11	14.05	13.99	11.28	8.68
196	25.94	22.86	23.1	18.88	17.24	16.06	13.93	14.05	11.31	8.71
197	26.09	22.78	23.32	19.21	17.29	16.26	14.05	13.96	11.45	8.71
198	26.22	22.84	23.38	19.37	17.2	16.26	14.05	13.76	11.54	8.82
199	26.52	23	23.35	19.12	16.84	15.95	14.07	13.73	11.76	9.15
200	26.75	23.24	23.44	18.68	16.67	15.8	14.34	13.99	11.91	9.32
201	26.73	23.37	23.35	18.35	16.76	15.87	14.43	14.05	11.74	9.38
202	26.47	23.35	23.13	18.27	16.65	15.87	14.43	13.85	11.54	9.26
203	26.14	23.24	22.86	18.18	16.31	15.7	14.18	13.53	11.26	8.85
204	25.99	23.04	22.4	17.99	15.98	15.5	13.8	13.25	11.03	8.65
205	25.94	22.88	22.09	17.93	16.06	15.42	13.73	13.19	10.89	8.65
206	25.96	22.78	22.09	17.99	16.25	15.33	13.71	13.16	10.97	8.44
207	26.14	22.76	22.37	17.94	16.18	15.46	13.68	13.13	11.2	8.32
208	26.24	22.78	22.28	18	16.33	15.46	13.75	13.31	11.37	8.62
209	26.29	22.86	22.28	18	16.57	15.44	13.91	13.51	11.6	8.76
210	26.52	22.88	22.86	18.15	16.71	15.61	14.02	13.71	11.82	8.82
211	26.88	23.06	23.47	18.19	16.98	15.83	14.3	14.28	12.36	9.35
212	27.14	23.39	23.62	18.29	17.35	16.15	14.87	15.02	12.81	9.76
213	27.14	23.61	23.53	18.8	17.71	16.71	15.07	15.31	12.98	9.76
214	27.06	23.59	23.77	19.09	17.88	17.01	14.98	15.17	12.95	9.59

Pixel Count	20:05	21:05	22:05	23:05	00:05	01:05	02:05	03:05	04:05	05:05
215	27.11	23.53	24.51	19.38	18.08	16.93	15.03	15.02	13.09	9.62
216	27.26	23.57	24.6	19.49	18.1	16.9	15.03	15.22	13.32	9.85
217	27.24	23.61	23.71	19.43	18	16.97	14.98	15.37	12.98	10.03
218	26.96	23.59	23.5	19.26	17.84	17.03	14.89	15.19	12.5	9.53
219	26.7	23.41	24.2	19.04	17.65	16.84	14.64	15.02	12.47	9.29
220	26.8	23.27	24.66	18.9	17.73	16.77	14.59	14.97	12.64	9.47
221	27.08	23.29	24.69	19.16	17.75	16.88	14.75	15.02	12.89	9.59
222	27.36	23.45	24.23	19.31	17.75	16.88	15	15.37	13.18	9.91
223	27.52	23.61	23.77	19.29	17.92	17.1	15.16	15.6	13.37	10.06
224	27.62	23.76	23.9	19.18	17.86	17.21	15.21	15.65	13.4	10.06
225	27.67	23.82	24.2	19.13	17.86	17.16	15.32	15.8	13.52	10.15
226	27.57	23.82	23.9	19.13	18.06	17.14	15.46	15.97	13.43	10.26
227	27.26	23.73	23.8	19.21	18.12	17.16	15.32	15.62	13.06	9.85
228	27.31	23.61	24.23	19.2	17.96	17.12	15.07	15.37	13.29	9.79
229	27.8	23.67	24.69	19.24	17.98	17.21	15.34	15.82	13.85	10.53
230	28.28	23.98	25.12	19.38	18.14	17.4	15.82	16.45	14.19	11.09
231	28.41	24.29	24.75	19.31	18.1	17.59	16.07	16.68	14.28	11.15
232	28.13	24.41	23.87	19.13	17.94	17.59	15.91	16.48	13.91	10.97
233	27.49	24.24	23.28	18.85	17.82	17.34	15.53	16.03	13.37	10.35
234	27.14	23.86	23.74	18.77	17.88	17.08	15.12	15.62	13.26	9.79
235	27.31	23.61	24.84	18.99	17.82	17.1	15.16	15.68	13.52	9.88
236	27.65	23.71	25.4	19.07	17.69	17.14	15.5	15.94	13.88	10.32
237	27.95	23.92	25.61	19.05	17.73	17.18	15.64	16.11	14.22	10.59
238	28.13	24.14	25.64	19.16	17.86	17.38	15.8	16.37	14.33	10.91
239	28.21	24.33	25.33	19.05	17.96	17.46	15.98	16.6	14.31	11.18
240	28.21	24.39	24.88	19.05	18.06	17.62	16	16.71	14.22	11.29
241	28.15	24.35	25	19.04	18.1	17.79	15.96	16.68	14.19	11.09
242	28.18	24.33	25.61	19.09	17.98	17.64	15.93	16.57	14.31	10.91
243	28.26	24.33	25.49	19.09	17.94	17.44	16	16.54	14.28	11.06
244	28.36	24.41	24.69	19.01	17.92	17.46	16.12	16.68	14.36	11.24
245	28.38	24.49	24.17	19.05	17.92	17.7	16.07	16.94	14.59	11.24
246	28.31	24.57	24.11	19.09	18.06	17.68	16.09	16.97	14.62	11.29
247	28.08	24.45	24.39	19.1	18.06	17.59	16	16.77	14.25	11.09
248	27.9	24.16	24.72	19.04	17.96	17.59	15.84	16.54	13.94	10.82
249	27.85	24.06	25.27	18.95	17.92	17.44	15.78	16.43	13.91	10.85
250	27.72	24.16	25.24	18.93	17.82	17.49	15.71	16.23	13.68	10.74
251	27.54	24.06	24.97	18.87	17.71	17.53	15.59	15.97	13.6	10.59
252	27.77	23.88	24.57	18.84	17.49	17.46	15.5	16.03	14.05	10.74
253	28.23	24.06	24.29	18.8	17.53	17.29	15.73	16.34	14.5	11.18
254	28.59	24.43	24.39	18.9	17.76	17.44	16.19	16.48	14.67	11.44

Pixel Count	20:05	21:05	22:05	23:05	00:05	01:05	02:05	03:05	04:05	05:05
255	28.56	24.63	25.03	18.84	17.73	17.49	16.32	16.43	14.53	11.32
256	28.31	24.55	25.46	18.6	17.49	17.31	16.03	16.08	14.14	10.91
257	28.03	24.43	25.52	18.41	17.31	17.14	15.78	15.8	13.85	10.56
258	27.77	24.31	25.49	18.4	17.33	16.99	15.66	15.6	13.74	10.29
259	27.57	24.14	25.46	18.51	17.43	16.88	15.5	15.45	13.54	10.03
260	27.52	24	25.46	18.68	17.51	16.86	15.41	15.51	13.49	10.15
261	27.57	24	25.3	18.8	17.69	16.9	15.43	16.03	13.49	10.26
262	27.75	24	25.43	18.95	17.92	17.08	15.57	16.43	13.6	10.62
263	27.87	24.1	25.49	19.07	18.04	17.38	15.73	16.51	13.83	10.94
264	28.08	24.24	25.46	19.1	18	17.7	15.78	16.63	13.94	10.97
265	28.33	24.33	25.52	19.07	17.92	17.77	15.91	16.91	14.25	11.26
266	28.51	24.51	25.55	18.99	18	17.94	16.16	17.08	14.45	11.44
267	28.31	24.57	25.4	19.04	18.02	17.96	16.21	16.77	14.19	11.35
268	28.03	24.47	25.06	18.93	17.71	17.79	15.89	16.34	14	11.06
269	27.98	24.37	25.12	18.82	17.59	17.53	15.8	16.08	14.02	10.88
270	28.05	24.37	24.81	18.79	17.59	17.34	15.87	15.85	14.05	10.68
271	28	24.37	24.75	18.77	17.57	17.18	15.91	15.71	13.97	10.53
272	27.77	24.31	24.72	18.77	17.69	17.03	15.8	15.77	13.63	10.38
273	27.42	24	25	18.9	17.73	17.08	15.46	15.77	13.37	10.15
274	27.24	23.75	25.21	18.96	17.75	17.16	15.21	15.62	13.66	9.94
275	27.31	23.73	25.18	19.1	17.82	17.18	15.25	15.65	14.11	9.91
276	27.34	23.86	24.88	19.27	18.16	17.34	15.46	15.82	14.19	9.88
277	27.36	23.94	24.94	19.45	18.29	17.4	15.5	15.91	14.02	9.79
278	27.42	23.9	24.91	19.45	18.1	17.4	15.46	15.91	13.91	9.97
279	27.49	23.84	24.66	19.31	18.2	17.46	15.48	15.91	13.91	10.06
280	27.47	23.88	24.91	19.2	18.08	17.46	15.53	15.91	13.91	9.97
281	27.31	23.88	25.7	19.24	17.9	17.36	15.34	15.74	13.71	9.85
282	27.19	23.78	25.92	19.12	17.76	17.23	15.23	15.57	13.57	9.82
283	27.16	23.73	26.13	18.88	17.53	17.03	15.25	15.42	13.43	9.94
284	27.44	23.71	25.52	18.79	17.29	17.05	15.18	15.34	13.35	10.18
285	27.82	23.9	24.94	18.66	17.2	16.93	15.34	15.48	13.71	10.5
286	27.7	24.2	24.54	18.44	17.27	16.84	15.57	15.51	13.74	10.29
287	27.31	24.12	24.63	18.46	17.29	16.86	15.39	15.19	13.26	9.76
288	27.14	23.8	24.94	18.51	17.14	16.56	15.07	14.71	12.95	9.47
289	27.24	23.71	25.03	18.54	17.1	16.39	14.98	14.65	13.04	9.65
290	27.42	23.8	25.43	18.58	17.22	16.47	15.12	14.99	13.18	9.97
291	27.49	23.86	25.7	18.68	17.24	16.6	15.32	15.34	13.2	10.24
292	27.47	23.84	26.04	18.65	17.24	16.77	15.23	15.42	13.23	10.32
293	27.49	23.92	25.46	18.57	17.33	16.88	15.16	15.42	13.37	10.32
294	27.57	24.02	24.72	18.57	17.43	16.9	15.21	15.4	13.57	10.38

Pixel Count	20:05	21:05	22:05	23:05	00:05	01:05	02:05	03:05	04:05	05:05
295	27.62	24.04	24.63	18.63	17.45	16.9	15.48	15.37	13.43	10.29
296	27.54	24.02	24.57	18.55	17.33	16.77	15.46	15.37	13.32	10.21
297	27.42	23.9	24.51	18.55	17.35	16.67	15.28	15.4	13.37	10.15
298	27.29	23.84	24.42	18.71	17.51	16.9	15.21	15.48	13.35	10.09
299	27.31	23.82	24.97	18.8	17.61	17.01	15.16	15.48	13.2	9.91
300	27.44	23.8	25.43	18.76	17.49	17.01	15.16	15.45	13.23	10.09
301	27.57	23.9	24.75	18.71	17.27	16.97	15.18	15.34	13.26	10.29
302	27.44	24.02	24.88	18.6	17.02	16.69	15.16	15.08	12.81	10.21
303	27.16	23.92	25.18	18.33	16.78	16.34	14.91	14.68	12.5	9.82
304	26.91	23.78	24.91	18.3	16.69	16.19	14.68	14.25	12.33	9.59
305	26.55	23.67	24.48	18.41	16.65	16.11	14.55	13.94	11.99	9.15
306	26.12	23.39	24.36	18.36	16.63	15.93	14.23	13.65	11.45	8.62
307	25.68	23.12	23.65	18.35	16.55	15.8	13.87	13.39	11.17	8.29
308	25.22	22.88	22.95	18.52	16.53	15.78	13.57	13.19	11.03	7.91
309	24.94	22.65	22.58	18.51	16.16	15.72	13.21	12.96	10.95	7.53
310	25.3	22.49	22.37	17.86	15.55	15.67	13.09	13.02	11.23	7.82
311	25.84	22.65	22.58	17.28	15.75	15.74	13.55	13.19	11.54	8.06
312	25.91	22.92	22.61	17.74	16.29	15.65	13.84	13.08	11.43	8.09
313	25.89	22.92	23.19	18.21	16.37	15.61	13.77	12.99	11.4	8.24
314	26.06	22.9	23.38	18.25	16.55	15.67	13.82	13.36	11.68	8.5
315	26.35	23.02	24.23	18.57	16.94	15.72	14.09	14.02	12.19	8.94
316	26.57	23.16	24.17	18.93	17.41	16.11	14.39	14.71	12.75	9.35
317	26.68	23.33	24.32	19.35	17.88	16.73	14.62	15.17	12.84	9.35
318	26.68	23.35	24.23	19.59	18.18	17.01	14.64	15.42	12.95	9.35
319	26.75	23.35	23.93	19.78	18.27	17.23	14.73	15.65	13.18	9.53
320	26.85	23.43	23.65	19.82	18.59	17.4	14.98	15.85	13.32	9.68
321	26.88	23.45	23.77	20.04	18.86	17.7	15.14	16.17	13.35	9.94
322	26.73	23.43	23.96	20.28	18.96	17.83	15.05	16.34	13.06	10
323	26.6	23.37	24.42	20.42	18.86	17.96	14.71	15.91	12.75	9.65
324	26.63	23.29	24.45	20.22	18.35	17.77	14.5	15.22	12.56	9.41
325	26.68	23.35	24.08	19.92	17.9	17.23	14.55	14.82	12.36	9.24
326	26.6	23.53	23.71	19.53	17.59	16.82	14.57	14.57	12.24	9.06
327	26.32	23.53	23.62	19.24	17.31	16.47	14.37	14.28	11.91	9
328	25.78	23.27	22.52	19.1	17.06	16.17	14.02	13.85	11.14	8.68
329	25.12	22.82	21.51	18.82	16.59	15.93	13.48	13.05	10.27	7.76
330	24.66	22.35	21.2	18.41	16.02	15.48	12.82	12.16	9.82	7.29
331	24.51	22.08	20.84	18.22	15.73	14.88	12.68	11.85	9.68	7.18
332	24.56	22.02	20.99	18.22	15.76	14.62	12.66	11.73	9.68	7.12
333	24.51	22.04	21.11	18.22	15.67	14.55	12.61	11.65	9.79	7.09
334	24.51	22.04	20.93	18.15	15.55	14.53	12.5	11.62	9.68	7.18

Pixel Count	20:05	21:05	22:05	23:05	00:05	01:05	02:05	03:05	04:05	05:05
335	24.56	22.04	20.99	18.05	15.53	14.6	12.5	11.7	9.53	6.97
336	24.56	22	21.02	18.04	15.53	14.55	12.55	11.73	9.65	7.12
337	24.64	22	21.14	18.02	15.51	14.55	12.45	11.7	9.73	7.15
338	24.66	22.08	21.17	18.07	15.45	14.51	12.52	11.7	9.76	7.12
339	24.66	22.1	21.39	18.02	15.47	14.53	12.64	11.7	9.76	7.06
340	24.64	22.08	21.36	17.99	15.51	14.62	12.61	11.7	9.65	7.12
341	24.66	22.08	21.48	17.94	15.49	14.64	12.61	11.76	9.65	7.09
342	24.69	22.04	21.54	18.05	15.47	14.53	12.57	11.76	9.62	7.12
343	24.71	22.06	21.72	18.02	15.45	14.47	12.64	11.82	9.65	7.26
344	24.76	22.08	21.57	17.89	15.37	14.57	12.66	11.85	9.79	7.26
345	24.87	22.1	21.57	17.82	15.33	14.42	12.68	11.87	9.9	7.32
346	24.97	22.18	21.91	17.82	15.35	14.42	12.75	11.87	9.87	7.32
347	24.99	22.24	22.15	17.75	15.43	14.42	12.75	11.9	9.9	7.32
348	24.94	22.24	21.94	17.63	15.47	14.42	12.71	11.96	9.99	7.21
349	24.99	22.22	21.88	17.67	15.43	14.51	12.82	12.07	9.9	7.29
350	24.92	22.22	21.76	17.67	15.47	14.57	12.89	12.1	9.87	7.41
351	25.05	22.24	21.79	17.78	15.49	14.62	12.86	12.07	10.04	7.38
352	25.35	22.27	22.03	17.82	15.53	14.66	12.91	12.13	10.32	7.59
353	25.68	22.49	22.06	17.72	15.61	14.64	13.11	12.48	10.66	8.06
354	25.76	22.71	22.34	17.8	15.86	14.88	13.36	12.93	10.75	8
355	25.53	22.67	22.28	17.85	16.06	15.22	13.41	12.96	10.61	8.03
356	25.48	22.51	22.18	17.86	15.96	15.26	13.16	12.93	10.61	8.06
357	25.81	22.49	22.86	17.86	16.06	15.26	13.25	13.39	11.12	8.44
358	26.24	22.71	23.62	18.05	16.59	15.52	13.77	14.05	11.82	8.82
359	26.65	23.04	23.84	18.44	17.25	16	14.18	14.59	12.44	9.03
360	26.93	23.31	23.99	18.88	17.67	16.43	14.5	15.14	12.81	9.47
361	27.01	23.47	24.26	19.27	17.88	16.73	14.75	15.51	12.89	9.53
362	26.88	23.51	24.45	19.38	18.04	16.93	14.8	15.4	12.64	9.29
363	26.75	23.47	24.08	19.4	17.98	16.95	14.68	14.85	12.5	9.06
364	26.85	23.47	24.45	19.23	17.78	16.65	14.64	14.82	12.61	9.09
365	26.93	23.45	24.63	19.15	17.69	16.47	14.84	14.99	12.75	9.03
366	26.88	23.57	24.88	19.15	17.71	16.56	14.91	14.88	12.64	8.91
367	26.88	23.65	25.09	19.05	17.63	16.47	14.75	14.97	12.7	9.12
368	27.06	23.59	25.33	19.01	17.69	16.47	14.87	15.45	12.98	9.53
369	27.26	23.61	25.21	19.24	17.98	16.8	15.07	15.94	13.23	10.06
370	27.24	23.63	24.91	19.34	18.14	17.18	15.21	16.05	13.09	10.29
371	27.08	23.61	25.24	19.35	18.08	17.36	15.12	15.85	12.75	10.18
372	27.11	23.55	25.36	19.31	17.84	17.31	14.93	15.77	12.81	10.29
373	27.03	23.57	25.24	19.13	17.67	17.14	14.98	15.85	12.67	10.29
374	26.78	23.55	25.24	19.2	17.76	17.16	14.89	15.57	12.41	9.59



Pixel Count	20:05	21:05	22:05	23:05	00:05	01:05	02:05	03:05	04:05	05:05
375	26.7	23.51	25.4	19.21	17.8	16.99	14.71	14.88	12.61	9.06
376	26.88	23.55	25.46	19.31	17.75	16.56	14.8	14.68	12.7	9.35
377	26.98	23.61	24.45	19.53	17.78	16.32	14.89	15.05	12.67	9.79
378	26.98	23.61	23.77	19.51	17.88	16.58	14.96	15.4	12.61	9.88
379	27.01	23.61	23.93	19.32	17.78	16.88	14.91	15.28	12.53	9.53
380	27.03	23.61	23.93	19.27	17.67	16.86	14.8	15.02	12.64	9.24
381	27.19	23.61	24.17	19.49	17.78	16.65	14.89	15.11	12.89	9.68
382	27.57	23.73	24.14	19.54	17.78	16.52	15.21	15.57	13.29	10.29
383	27.82	24	24.23	19.24	17.67	16.8	15.59	15.85	13.6	10.38
384	27.7	24.18	24.42	19.09	17.63	17.01	15.66	15.74	13.23	10.47
385	27.62	24.12	24.97	19.04	17.65	16.88	15.43	15.62	13.06	10.5
386	27.77	24.02	25.09	19.04	17.57	16.82	15.37	15.77	13.29	10.76
387	27.9	24.18	24.6	18.98	17.55	16.95	15.57	16.11	13.35	10.82
388	27.75	24.27	24.32	19.01	17.75	17.08	15.59	16.23	13.23	10.79
389	27.7	24.08	24.36	19.13	17.78	17.12	15.37	16.14	13.23	10.82
390	27.98	23.98	25.46	19.09	17.65	17.1	15.37	16.05	13.6	10.79
391	28.41	24.25	25.98	18.99	17.67	17.1	15.78	16.17	14.14	10.91
392	28.64	24.75	26.31	18.93	17.69	17.12	16.19	16.37	14.19	10.94
393	28.54	24.9	26.59	18.76	17.65	17.1	16.12	16.28	13.77	10.94
394	28.49	24.71	26.31	18.69	17.47	17.01	15.89	16.05	13.57	10.97
395	28.59	24.73	26.56	18.63	17.37	16.88	15.98	16	13.77	11.26
396	28.56	24.9	26.13	18.62	17.31	16.93	16.14	16.14	13.54	11.38
397	28.13	24.8	26.07	18.55	17.27	16.93	15.84	15.97	13.06	10.97
398	27.95	24.51	25.88	18.62	17.37	16.75	15.48	15.45	13.12	10.47
399	28.18	24.45	25.79	18.98	17.47	16.52	15.59	15.19	13.46	10.59
400	28.46	24.63	25.88	19.1	17.39	16.36	15.87	15.31	13.52	10.97

*Window 4 (LIP1 slope at the Chasm, see Figure 3-2 in main text for location)*

**Table C8. POI slope surface temperatures (in degrees Celsius) in Window 4 for all times of the survey on August 2 to August 3, 2015.**

Time	20:05	21:05	22:05	23:05	00:05	01:05	02:05	03:05	04:05	05:05
Point 1	28	24.3	26.1	20.6	19.2	17.9	17.2	15.8	14.4	12.2
Point 2	29.2	25.1	27.2	21	19.6	18.3	17.4	16.1	14.3	12.3
Point 3	24.6	22	23.3	19.1	17.6	17.1	16.6	15.7	14.3	12.8

**Table C9. Slope surface temperatures (in degrees Celsius) along Column 89 in Window 4 for all times of the survey on August 2 to August 3, 2015.**

Pixel count	20:05	21:05	22:05	23:05	00:05	01:05	02:05	03:05	04:05	05:05
1	28.41	24.43	25.98	19.13	17.71	17.08	16.64	16.14	13.94	11.38

Pixel count	20:05	21:05	22:05	23:05	00:05	01:05	02:05	03:05	04:05	05:05
2	28.38	24.41	26.04	19.27	17.75	17.1	16.75	16.05	14.16	11.44
3	28.54	24.45	26.13	19.1	17.8	16.99	16.98	15.94	14.19	11.53
4	28.66	24.49	26.19	19.09	17.75	17.21	16.71	16.17	14.25	11.71
5	28.61	24.59	26.31	19.1	17.75	17.14	17	16.4	14.19	11.88
6	29	24.71	26.53	19.1	17.67	16.97	16.8	16.2	14.28	11.82
7	28.84	24.73	26.62	19.07	17.67	16.93	16.64	16.14	14.36	11.85
8	28.92	24.71	26.44	18.99	17.75	17.18	16.94	16.28	14.16	12
9	28.95	24.75	26.62	18.88	17.75	16.97	17.12	16.51	14.59	12.15
10	28.72	24.76	26.59	19.05	17.78	17.38	16.89	16.43	14.5	12.06
11	28.51	24.69	26.37	19.01	17.63	16.95	16.78	16.03	14.05	11.85
12	28.44	24.65	26.31	18.77	17.47	16.97	16.55	15.6	13.8	11.74
13	28.49	24.57	26.28	18.58	17.14	16.43	16.25	15.14	13.49	11.53
14	28.26	24.49	26.16	18.27	16.75	16.17	16.16	14.77	13.01	11.29
15	28.31	24.41	25.98	18.25	16.57	15.91	15.96	14.57	12.87	11
16	27.95	24.33	25.92	18.29	16.63	16.02	16.07	14.51	12.87	10.97
17	27.95	24.25	25.92	18.32	16.63	15.98	16.21	14.45	12.75	10.97
18	27.93	24.18	25.61	18.63	16.88	16.17	15.87	14.68	12.92	10.88
19	28	24.16	25.58	18.93	17.08	16.13	15.89	15.14	13.04	10.82
20	28.1	24.24	26.19	18.96	17.25	16.3	16.19	15.14	13.26	10.94
21	28.1	24.29	26.16	18.96	17.35	16.56	16.3	15.22	13.2	11.21
22	27.98	24.2	25.58	19.05	17.45	16.73	16.46	15.48	13.54	11.35
23	27.87	24	25.15	19.13	17.67	16.77	16.46	15.48	13.29	11.09
24	27.59	23.84	24.81	19.35	17.75	16.9	16.41	15.4	13.04	10.85
25	27.44	23.73	24.63	19.48	17.9	16.84	16.37	14.97	13.26	10.76
26	27.24	23.57	24.39	19.51	18.02	16.95	16.53	15.48	13.32	10.71
27	27.01	23.49	24.36	19.48	17.86	16.95	16.19	15.14	13.29	10.47
28	27.31	23.65	24.88	19.48	17.88	17.01	15.8	15.19	13.09	10.44
29	27.7	23.94	25.12	19.64	18.14	17.18	16.05	16.17	13.57	10.74
30	27.34	23.86	24.51	19.85	18.33	17.42	16.21	16.23	13.52	10.74
31	27.29	23.69	24.36	19.85	18.53	17.57	16.14	15.82	13.57	10.65
32	27.36	23.69	24.69	19.85	18.59	17.62	16.37	15.97	13.94	10.74
33	27.67	23.88	25.03	19.78	18.45	17.62	16.23	16.17	13.8	10.97
34	27.82	24.02	25.4	19.56	18.41	17.55	16.62	16.23	14	11.26
35	27.59	23.92	24.97	19.43	18.24	17.7	16.44	16	13.83	11.26
36	27.44	23.8	24.81	19.42	17.98	17.44	16.34	15.6	13.54	10.94
37	27.47	23.78	24.91	19.35	17.86	17.21	16.19	15.88	13.6	10.85
38	27.67	23.88	25.12	19.43	18.06	17.31	16.57	16.17	13.66	11
39	27.59	23.86	25.03	19.57	18.24	17.42	16.53	16.03	13.66	11.06
40	27.16	23.82	24.97	19.59	18.27	17.55	16.59	15.94	13.52	10.74
41	27.34	23.86	25.18	19.6	18.2	17.34	16.25	15.77	13.46	10.59

Pixel count	20:05	21:05	22:05	23:05	00:05	01:05	02:05	03:05	04:05	05:05
42	27.65	23.94	25.27	19.71	18.33	17.46	16.32	16.17	13.8	10.88
43	27.75	23.94	25.24	19.75	18.31	17.68	16.44	16.34	14	11.03
44	27.8	23.96	25.27	19.51	18.31	17.4	16.55	16.48	13.97	11.12
45	27.85	24.06	25.55	19.49	18.29	17.66	16.55	16.48	14.05	11.35
46	28.03	24.14	25.52	19.45	18.25	17.53	16.69	16.23	14.08	11.41
47	27.8	24.06	25.24	19.49	18.16	17.49	16.94	16.45	13.97	11.44
48	27.72	24.04	25.18	19.43	18.14	17.49	16.71	16.43	14.11	11.44
49	27.98	24.04	25.15	19.48	18.1	17.38	16.8	16.34	14.08	11.47
50	28.03	24.14	25.58	19.49	18.22	17.59	16.91	16.43	14.05	11.59
51	28.26	24.27	26.13	19.45	18.25	17.53	17.09	16.77	14.25	11.71
52	28.46	24.41	26.19	19.45	18.27	17.64	17.03	16.74	14.45	11.82
53	28.54	24.53	26.25	19.43	18.24	17.72	17	16.68	14.56	11.88
54	28.61	24.55	26.22	19.29	18.2	17.59	16.91	16.25	14.25	12.06
55	28.61	24.63	26.34	19.31	18.08	17.57	16.94	16.51	14.02	12.15
56	28.61	24.63	26.13	19.21	17.9	17.42	17	16.45	14.31	12.09
57	28.46	24.53	26.07	19.16	17.84	17.36	16.84	16.25	14.25	11.94
58	28.21	24.41	25.73	18.99	17.78	17.18	16.8	15.97	14.02	11.76
59	28.15	24.33	25.7	19.18	17.78	16.97	16.48	16.08	13.85	11.59
60	28.05	24.22	25.46	19.31	17.78	17.21	16.55	16	13.77	11.41
61	27.95	24.04	25.33	19.21	17.69	16.88	16.44	15.74	13.63	11.09
62	27.82	23.98	25.3	19.21	17.71	16.95	16.39	15.74	13.57	11
63	27.7	23.92	25.06	19.1	17.51	17.03	16.23	15.65	13.32	11.06
64	27.67	23.88	25.12	19.07	17.55	16.77	16.23	15.25	13.4	10.88
65	27.77	23.98	25.12	19.12	17.45	16.8	16.16	15.42	13.23	10.79
66	27.26	23.88	24.36	19.04	17.35	16.73	16.05	15.14	12.89	10.62
67	26.45	23.35	23.53	18.9	17.31	16.36	15.43	14.62	12.1	9.79
68	26.06	22.94	23.01	19.15	17.16	16.08	15.16	13.82	11.51	9.03
69	26.52	22.9	23.62	19.29	17.2	16.11	15.18	14.16	11.68	9.09
70	26.65	23	23.44	19.45	17.43	16.52	15.55	14.62	12.41	9.47
71	26.55	23.06	23.68	19.32	17.49	16.56	15.8	14.77	12.33	9.59
72	26.7	23.12	23.9	19.48	17.49	16.58	15.48	14.36	12.08	9.44
73	26.88	23.31	24.14	19.57	17.51	16.43	15.55	14.57	12.44	9.56
74	27.19	23.45	24.23	19.51	17.69	16.65	15.71	14.97	12.47	9.82
75	26.85	23.41	24.11	19.45	17.71	16.6	15.32	15.17	12.64	9.76
76	26.35	23.18	23.25	19.53	17.69	16.62	15.05	14.82	12.36	9.35
77	26.14	22.8	22.8	19.68	17.69	16.56	15	14.68	12.08	8.82
78	26.17	22.67	23.04	19.73	17.75	16.49	15.18	14.59	11.99	8.79
79	26.45	22.78	23.07	19.78	17.84	16.6	15.43	14.74	12.27	9.24
80	26.57	22.96	23.44	19.71	17.78	16.8	15.5	14.85	12.41	9.26
81	26.42	23.02	23.53	19.53	17.61	16.62	15.3	14.68	12.3	9.32

Pixel count	20:05	21:05	22:05	23:05	00:05	01:05	02:05	03:05	04:05	05:05
82	26.35	22.94	23.44	19.45	17.37	16.34	15.3	14.88	12.08	9.26
83	26.42	22.94	23.5	19.31	17.2	16.15	15.23	14.31	12.19	9.21
84	26.57	23.04	23.71	19.26	17.08	16.28	15.3	14.48	12.16	9.26
85	26.93	23.12	23.96	19.31	17.18	16.24	15.68	14.39	12.36	9.5
86	27.06	23.33	24.26	19.37	17.29	16.45	15.87	15.02	12.64	9.94
87	27.26	23.53	24.81	19.37	17.47	16.47	16	15.11	12.92	10.06
88	27.57	23.59	24.75	19.15	17.49	16.82	15.98	15.54	13.09	10.21
89	27.39	23.71	24.91	19.02	17.37	16.45	16.14	15.25	13.18	10.35
90	26.78	23.63	24.39	18.96	17.39	16.43	15.78	15.05	12.78	9.94
91	26.24	23.2	23.53	19.45	17.49	16.45	15.32	14.51	12.08	9.24
92	26.24	22.98	23.53	19.85	17.69	16.67	15.21	14.45	12.13	9.03
93	26.63	23.06	23.68	19.76	17.9	16.93	15.46	14.97	12.56	9.21
94	26.93	23.18	23.8	19.68	17.92	16.97	15.87	15.17	12.72	9.59
95	26.88	23.08	23.93	19.48	17.8	16.84	15.96	15.22	12.78	9.74
96	26.78	23.14	23.87	19.35	17.61	16.77	15.82	15.14	12.67	9.62
97	26.8	23.12	23.71	19.54	17.63	16.86	16.12	15.19	12.44	9.76
98	26.78	22.98	23.56	19.31	17.73	16.71	15.91	14.79	12.64	9.71
99	26.63	23.02	23.65	19.46	17.59	16.77	15.75	14.88	12.44	9.56
100	26.63	23.08	23.65	19.42	17.59	16.52	15.87	15.11	12.53	9.62
101	26.78	23.06	23.93	19.49	17.61	16.73	15.71	15.14	12.56	9.62
102	27.01	23.22	24.11	19.42	17.55	16.67	15.78	15.14	12.89	9.85
103	27.01	23.37	24.29	19.43	17.61	16.9	15.91	15.25	12.72	10.06
104	27.08	23.43	24.45	19.27	17.57	16.71	15.71	15.11	12.75	9.88
105	27.08	23.55	24.29	19.24	17.45	16.56	15.5	14.82	12.41	9.68
106	27.06	23.61	24.45	19.21	17.35	16.39	15.16	14.94	12.27	9.41
107	27.11	23.57	24.51	19.37	17.25	16.36	15.39	14.57	12.44	9.38
108	27.03	23.49	24.05	19.34	17.43	16.47	15.59	15.05	12.7	9.5
109	27.01	23.33	24.02	19.27	17.61	16.49	15.82	15.11	12.64	9.71
110	26.83	23.14	23.56	19.43	17.59	16.73	15.62	15.22	12.53	9.47
111	26.55	23	23.5	19.46	17.59	16.73	15.87	14.94	12.64	9.18
112	26.73	22.96	23.44	19.64	17.78	16.97	16.12	15.37	12.89	9.41
113	27.08	23.06	23.84	19.64	18.04	17.27	16.53	15.88	13.2	9.82
114	27.24	23.2	23.77	19.64	18.18	17.38	16.53	16.28	13.46	10.26
115	27.24	23.14	23.96	19.54	18.22	17.57	16.82	16.43	13.71	10.44
116	27.67	23.2	24.45	19.38	18.06	17.64	16.96	16.37	13.85	10.82
117	28.15	23.55	24.94	19.24	17.82	17.51	17.12	16.63	14.31	11.26
118	28.41	23.88	25.82	19.01	17.73	17.31	17.14	16.14	14.62	11.62
119	28.44	24.12	25.73	19.01	17.63	17.31	17.21	16.77	14.36	11.5
120	28.41	24.18	25.7	18.91	17.69	17.34	17.12	16.63	14.39	11.44
121	28.33	24.12	25.82	19.09	17.73	17.21	16.96	16.6	14.25	11.24

Pixel count	20:05	21:05	22:05	23:05	00:05	01:05	02:05	03:05	04:05	05:05
122	28.31	24.12	25.79	19.13	17.71	17.29	16.75	16.6	13.97	10.97
123	28.26	24.18	25.76	19.12	17.67	17.03	16.62	16.17	14	11.12
124	28.33	24.27	25.95	19.07	17.65	17.18	16.75	16.34	13.88	11.18
125	28.36	24.35	25.82	19.07	17.63	17.12	16.73	16.45	14.14	11.26
126	28.15	24.2	25.7	18.99	17.65	17.29	16.8	16.31	13.85	11.21
127	28	24.06	25.43	18.96	17.53	16.99	16.62	15.91	13.54	10.76
128	27.87	24.04	25.55	18.95	17.41	16.99	16.5	15.97	13.57	10.65
129	27.8	24.08	25.61	18.82	17.35	16.8	16.21	15.77	13.15	10.59
130	27.65	24	25.06	18.85	17.29	16.62	16.34	15.71	13.49	10.53
131	27.57	23.86	25.03	18.88	17.35	16.84	16.3	15.8	13.46	10.35
132	27.93	23.94	25.4	18.93	17.47	16.8	16.62	15.54	13.32	10.62
133	28.54	24.24	26.16	18.96	17.69	17.25	17.16	16.54	14.08	11.18
134	28.72	24.55	26.53	19.12	17.82	17.29	16.96	16.77	14.31	11.56
135	28.69	24.65	26.31	19.16	17.88	17.31	16.96	16.86	14.33	11.68
136	28.64	24.63	26.25	19.18	17.75	17.38	16.91	16.68	14.45	11.74
137	28.66	24.47	26.31	19.13	17.78	17.25	16.89	16.83	14.45	11.59
138	28.72	24.41	25.88	19.18	17.92	17.38	16.87	16.71	14.36	11.56
139	28.66	24.45	26.5	19.13	17.98	17.36	17.09	17	14.39	11.76
140	28.66	24.51	26.16	19.13	17.94	17.46	16.94	17.11	14.64	11.85
141	28.77	24.63	26.31	19.1	17.86	17.38	17.03	17.11	14.53	11.85
142	28.82	24.67	26.31	19.05	17.88	17.29	17.03	16.71	14.5	11.94
143	28.66	24.63	26.28	19.18	17.78	17.53	17.09	16.83	14.5	11.82
144	28.66	24.61	26.34	19.09	17.71	17.18	17.03	16.86	14.5	11.68
145	28.69	24.65	26.31	19.05	17.73	17.25	17.03	16.94	14.39	11.88
146	28.54	24.61	26.01	19.1	17.86	17.31	16.78	16.77	14.48	11.68
147	28.46	24.53	26.22	19.1	17.9	17.29	16.82	16.71	14.28	11.35
148	28.46	24.55	26.1	19.05	17.8	17.21	16.78	16.23	14.11	11.35
149	28.54	24.51	26.13	19.04	17.67	17.18	16.84	16.4	14.31	11.53
150	28.54	24.57	26.19	18.96	17.65	17.08	16.91	16.45	14.25	11.68
151	28.69	24.63	26.34	18.91	17.69	17.25	17.03	16.51	14.33	11.82
152	28.64	24.61	26.19	18.96	17.75	17.25	16.91	16.68	14.39	11.88
153	28.59	24.59	26.13	18.91	17.75	17.16	16.96	16.51	14.22	11.79
154	28.69	24.49	26.13	18.88	17.75	17.16	17.14	16.37	14.28	11.71
155	28.72	24.45	26.44	18.91	17.78	17.21	17.16	16.57	14.19	11.91
156	28.72	24.47	26.19	18.93	17.78	17.03	17.16	16.4	14.22	12.09
157	28.59	24.59	26.34	18.79	17.69	16.99	16.78	16.31	14.08	11.91
158	28.72	24.57	26.37	18.8	17.57	17.05	17	16.11	14.14	11.68
159	28.92	24.67	26.53	18.91	17.61	17.03	16.98	16.6	14.14	11.76
160	28.79	24.67	26.68	18.91	17.67	17.12	17.05	16.77	14.25	11.94
161	28.74	24.67	26.44	18.96	17.73	17.14	16.87	16.8	14.33	11.79

Pixel count	20:05	21:05	22:05	23:05	00:05	01:05	02:05	03:05	04:05	05:05
162	28.84	24.63	26.5	19.01	17.8	17.23	16.98	16.63	14.33	11.82
163	28.89	24.78	26.77	19.09	17.9	17.18	17.07	16.83	14.59	12
164	28.84	24.88	26.8	19.24	17.98	17.38	17	17.23	14.5	12.06
165	28.79	24.9	26.53	19.27	17.98	17.4	16.87	17.03	14.5	12.06
166	28.87	24.96	26.77	19.26	18.12	17.34	16.84	16.48	14.39	12
167	28.92	25.02	26.71	19.16	18.16	17.53	17.35	16.77	14.53	12.12
168	28.77	24.84	26.62	19.21	18.06	17.51	17.25	16.68	14.31	12.09
169	28.56	24.73	26.62	19.27	18	17.36	16.87	16.74	14.28	11.68
170	28.59	24.63	26.37	19.31	18.02	17.38	16.78	16.88	14.31	11.56
171	28.64	24.61	26.5	19.43	18.06	17.42	17	16.63	14.48	11.65
172	28.61	24.71	26.4	19.4	18.25	17.7	17	16.77	14.39	11.74
173	28.59	24.75	26.44	19.48	18.25	17.49	17	16.8	14.28	11.74
174	28.54	24.69	26.22	19.45	18.27	17.44	16.82	16.74	14.33	11.79
175	28.59	24.78	26.44	19.46	18.29	17.59	17.03	16.43	14.39	11.74
176	28.56	24.88	26.47	19.51	18.27	17.7	16.73	16.71	14.42	11.74
177	28.46	24.86	26.4	19.48	18.27	17.46	16.64	16.34	14.28	11.76
178	28.51	24.84	26.25	19.38	18.16	17.49	16.64	16.86	14.28	11.71
179	28.59	24.73	26.47	19.4	18.04	17.31	16.78	16.65	14.36	11.76
180	28.77	24.9	26.71	19.29	18	17.36	16.89	16.71	14.53	12.03
181	28.87	25.16	26.96	19.18	18.12	17.49	16.96	16.77	14.76	12.29
182	28.72	25.1	26.77	18.99	17.9	17.36	17	16.6	14.7	12.21
183	28.69	25.02	26.86	18.88	17.84	17.31	16.94	16.43	14.36	12.15
184	28.66	25.02	26.92	18.82	17.75	17.12	16.84	16.34	14.33	12.29
185	28.66	24.98	26.8	18.82	17.73	17.31	16.96	16.34	14.19	12.24
186	28.72	24.96	26.65	18.96	17.71	16.97	16.84	16.4	14.31	12.09
187	28.64	24.82	26.37	19.1	17.78	17.23	16.94	16.43	14.22	12
188	28.56	24.82	26.44	19.05	17.86	17.21	16.78	16.54	14.48	12.03
189	28.59	24.88	26.28	18.95	17.86	17.27	16.84	16.34	14.48	12.18
190	28.23	24.61	25.73	18.88	17.8	17.31	16.55	16.25	14.16	12.03
191	27.85	24.22	25.43	18.84	17.55	16.95	16.39	15.74	13.54	11.32
192	28.08	24.14	25.49	18.85	17.43	16.75	16.46	15.91	13.77	11.26
193	28.23	24.24	25.58	18.96	17.55	17.16	16.91	16.31	14.25	11.5
194	28.18	24.16	25.58	18.98	17.57	17.25	16.87	16.25	14.36	11.5
195	28.1	24.16	25.36	19.05	17.67	17.05	16.66	16.08	14.14	11.47
196	28.1	24.18	25.33	19.12	17.67	17.14	16.75	16.17	14.05	11.47
197	28.46	24.31	26.01	19.18	17.75	17.27	16.84	16.48	14.36	11.68
198	28.54	24.49	26.07	19.2	17.88	17.44	16.84	16.63	14.5	11.85
199	28.49	24.51	26.13	19.34	17.9	17.46	17.21	17.14	14.53	11.88
200	28.36	24.49	25.79	19.4	18.06	17.51	16.75	16.63	14.36	11.71
201	28.26	24.49	25.88	19.48	18.18	17.51	16.84	17.03	14.5	11.68

Pixel count	20:05	21:05	22:05	23:05	00:05	01:05	02:05	03:05	04:05	05:05
202	28.54	24.43	26.07	19.4	18.18	17.72	16.75	16.88	14.59	11.82
203	28.59	24.43	25.76	19.38	18.14	17.77	17.09	16.94	14.93	11.85
204	28.33	24.41	25.64	19.46	18.16	17.7	17	17.23	14.98	11.85
205	28.05	24.2	25.27	19.42	18.14	17.72	17.05	16.88	14.59	11.59
206	28	24.06	25.21	19.48	18.14	17.55	16.87	16.57	14.28	11.21
207	28.21	24.18	25.55	19.45	18.14	17.38	16.8	16.57	14.5	11.21
208	28.1	24.25	25.33	19.48	18.24	17.62	17.03	16.68	14.67	11.35
209	27.54	24.08	24.78	19.64	18.2	17.62	16.8	17.23	14.62	10.94
210	27.29	23.82	24.54	19.89	18.47	17.53	16.44	16.74	13.85	10.41
211	27.59	23.84	24.78	20.12	18.8	17.7	16.55	16.71	14.02	10.53
212	28	24.12	25.46	20.03	18.86	17.94	16.75	17.08	14.33	10.91
213	28.28	24.47	26.1	19.89	18.94	18.13	16.94	16.94	14.67	11.12
214	28.66	24.75	26.34	19.65	18.71	17.83	16.62	17.37	15.04	11.35
215	29.02	25	26.44	19.56	18.37	17.75	16.94	17.28	15.35	11.68
216	29.07	25.12	26.71	19.4	18.49	17.87	17.09	17.71	15.27	11.85
217	29.05	25.08	26.89	19.54	18.41	18.05	17.14	17.77	15.35	11.91
218	29.12	25.24	26.65	19.59	18.51	17.81	17.25	17.54	15.1	11.94
219	29.05	25.2	26.71	19.51	18.61	17.92	16.96	17.51	15.35	11.79
220	28.92	25.12	26.71	19.59	18.71	18	17.25	17.71	15.24	11.79
221	29.02	25.04	26.74	19.54	18.73	18.11	16.96	17.74	15.07	11.88
222	29.02	25.08	26.68	19.42	18.65	17.92	17.41	17.46	15.15	11.94
223	29.12	25.1	26.99	19.35	18.49	17.83	17.16	17.49	15.12	12.06
224	29.12	25.04	26.83	19.31	18.45	17.87	17.39	17.54	15.38	12.21
225	29.05	25.12	26.77	19.18	18.53	17.87	17.39	17.54	15.15	12.21
226	29.07	25.06	26.59	19.09	18.45	17.94	17.44	17.2	15.15	12.15
227	29.23	25	26.92	19.09	18.45	17.72	17.46	17.03	15.1	12.12
228	29.2	24.96	26.74	19.04	18.43	17.66	17.3	17.08	14.98	12.18
229	28.97	24.92	26.71	18.9	18.25	17.62	17.21	17.26	14.84	12.09
230	29.05	24.84	26.77	18.9	18.2	17.55	17.35	17.03	14.79	11.97
231	29.07	24.9	26.83	18.74	18.1	17.21	17.35	16.6	14.76	11.97
232	28.95	24.78	26.77	18.65	17.98	17.29	17.25	16.25	14.56	12.06
233	28.87	24.75	26.92	18.62	17.96	17.18	17.16	16.43	14.48	12
234	28.89	24.71	26.77	18.6	17.86	16.9	17.19	16.23	14.28	11.82
235	28.89	24.75	26.59	18.47	17.73	16.77	17.03	16.2	14.22	11.82
236	28.64	24.61	26.34	18.52	17.63	16.84	16.96	15.74	14.02	11.56
237	28.49	24.63	26.5	18.46	17.59	16.75	16.73	15.65	13.91	11.32
238	28.64	24.67	26.65	18.63	17.55	16.6	16.73	15.65	13.77	11.41
239	28.69	24.73	26.56	18.41	17.39	16.52	16.84	15.65	13.88	11.56
240	28.72	24.78	26.59	18.52	17.37	16.67	17.07	15.8	13.83	11.62
241	28.64	24.71	26.56	18.44	17.51	16.67	16.8	15.6	13.97	11.71

Pixel count	20:05	21:05	22:05	23:05	00:05	01:05	02:05	03:05	04:05	05:05
242	28.72	24.75	26.56	18.52	17.35	16.54	16.78	15.88	14.02	11.65
243	28.87	24.71	26.62	18.55	17.29	16.52	16.91	15.74	13.8	11.59
244	28.77	24.65	26.59	18.55	17.24	16.49	16.78	15.91	14.02	11.65
245	28.69	24.67	26.37	18.65	17.24	16.65	16.94	15.77	13.85	11.65
246	28.72	24.75	26.47	18.65	17.31	16.62	16.87	15.54	13.88	11.53
247	28.69	24.63	26.5	18.66	17.35	16.6	16.87	15.8	14.02	11.76
248	28.66	24.63	26.56	18.73	17.33	16.52	16.8	15.74	14.02	11.68
249	28.77	24.65	26.44	18.77	17.31	16.69	16.94	15.91	14.19	11.5
250	28.72	24.69	26.25	18.76	17.39	16.73	16.84	15.82	14.02	11.5
251	28.51	24.51	26.16	18.82	17.47	16.84	16.64	16.11	13.97	11.41
252	28.23	24.35	25.64	18.88	17.53	16.93	16.57	15.97	14.08	11.32
253	28.1	24.27	25.49	18.88	17.73	16.88	16.55	15.88	13.57	11.03
254	28.31	24.29	25.4	19.02	17.76	16.73	16.53	16	13.85	11.18
255	28.03	24.08	25.15	18.99	17.82	17.05	16.69	16.28	13.94	11.18
256	27.52	23.67	24.39	19.2	17.84	16.97	16.3	15.94	13.71	10.56
257	27.44	23.55	24.39	19.21	17.82	17.03	16.25	16	13.54	10.44
258	27.26	23.59	24.14	19.31	17.65	16.95	16.28	16	13.63	10.47
259	27.14	23.65	24.23	19.13	17.67	17.01	15.75	15.62	13.09	9.97
260	27.54	23.78	24.48	19.09	17.53	16.67	15.8	15.57	13.18	9.82
261	27.42	23.76	24.57	19.15	17.57	16.69	16.23	15.82	13.57	10.21
262	27.06	23.55	24.05	19.13	17.59	16.97	16.05	15.31	13.18	10.06
263	26.98	23.29	23.99	19.15	17.71	16.77	15.8	15.28	12.98	9.74
264	27.11	23.43	24.48	19.21	17.41	16.6	15.55	15.05	12.75	9.65
265	27.54	24	25.21	19.07	17.25	16.6	15.82	15.4	12.95	9.97
266	27.54	24	24.88	18.88	17.25	16.6	15.98	15.22	13.06	10.41
267	26.83	23.37	23.71	18.62	17.1	16.39	15.93	15.31	12.72	9.79
268	26.12	22.88	23.32	18.73	16.86	15.98	15.39	14.25	12.02	8.88
269	26.14	22.78	23.22	18.98	16.76	16	14.98	14.36	11.76	8.71
270	26.5	23.06	23.65	19.04	16.98	15.91	14.98	14.31	11.76	8.82
271	26.6	23.22	23.9	18.93	17.08	15.93	15.09	14.57	12.1	9.06
272	26.37	23.08	23.53	18.73	16.88	16.02	15.09	14.14	11.71	9
273	26.14	22.92	23.28	18.77	16.78	15.7	15.05	13.73	11.37	8.74
274	26.35	22.98	23.44	18.99	16.92	15.76	14.96	14.02	11.57	8.85
275	26.73	23.22	23.8	19.13	17.06	15.93	15.18	14.51	12.16	9.15
276	26.68	23.25	23.74	19.07	17.27	16.36	15.48	14.54	12.22	9.38
277	26.73	23.2	23.74	19.1	17.35	16.32	15.37	14.62	12.27	9.41
278	26.78	23.31	23.96	19.07	17.18	16.15	15.3	14.54	12.24	9.41
279	26.91	23.55	23.84	18.9	17.16	16.06	15.48	14.88	12.64	9.44
280	27.08	23.57	24.08	18.96	17.25	16.3	15.5	14.25	12.41	9.62
281	27.54	23.67	24.63	18.99	17.18	16.41	15.89	14.97	12.58	10.03



Pixel count	20:05	21:05	22:05	23:05	00:05	01:05	02:05	03:05	04:05	05:05
282	27.77	23.88	24.75	19.13	17.31	16.62	16.03	15.85	13.4	10.44
283	27.29	23.75	24.14	19.31	17.59	17.03	16.3	15.91	13.49	10.32
284	27.01	23.43	23.96	19.6	17.8	16.97	15.93	15.74	13.04	9.85
285	27.26	23.45	24.11	19.6	17.86	16.77	15.96	15.57	13.04	9.82
286	27.47	23.55	24.26	19.75	17.88	17.03	16.05	15.57	13.23	10.06
287	27.47	23.65	24.42	19.67	18.02	17.34	16.34	15.94	13.54	10.26
288	27.39	23.73	24.48	19.53	17.88	17.03	16.05	15.88	13.49	10.21
289	27.39	23.63	24.42	19.35	17.78	16.9	16	15.57	13.32	10.18
290	27.57	23.55	24.45	19.23	17.57	16.86	16.21	15.6	13.2	10.41
291	27.65	23.63	24.66	19.1	17.51	16.6	16	15.48	13.18	10.41
292	27.82	23.76	24.78	18.99	17.55	16.8	16.19	15.6	13.32	10.41
293	27.54	23.71	24.57	19.05	17.43	16.9	16.19	15.82	13.37	10.38
294	27.16	23.57	24.2	18.8	17.33	16.56	15.71	14.65	12.75	9.97
295	26.85	23.47	23.9	18.6	17.08	16.15	15.55	14.62	12.41	9.68
296	26.42	23.1	23.19	18.66	17	15.91	15.46	14.19	12.16	9.44
297	25.96	22.76	22.52	18.6	16.82	15.8	14.89	13.48	11.37	8.59
298	25.61	22.45	22.09	18.65	16.57	15.37	14.5	12.93	10.92	8.09
299	25.45	22.35	22.12	18.62	16.57	15.29	14.34	12.82	10.72	7.94
300	25.48	22.31	22.09	18.47	16.53	15.22	14.21	12.76	10.69	7.88
301	25.48	22.27	21.97	18.54	16.41	15.22	14.18	12.88	10.21	7.79

*Lab Survey 1: Samples MD-CH03-01, MD-CH03-02 and MD-CH08-01*

**Table C10. Sample surface temperatures (in degrees Celsius) of POIs in Lab Survey 1, samples MD-CH03-01, MD-CH03-02 and MD-CH08-01.**

Time (mins)	POI 1	POI 2	POI 3	POI 4	POI 5
0	74.9	75.5	74.6	75.6	76.3
10	74.8	74.8	71.4	75.3	65.7
20	72.2	65.8	62.3	69.2	55.3
30	68.1	58.2	54.9	64	48.1
40	64.4	52.1	48.8	59.5	42.8
50	60.8	47.2	44	55.8	38.8
60	57.5	43.3	40.2	52.5	35.9
70	54.5	40	37.2	49.6	33.6
80	51.8	37.4	34.8	47.1	31.7
90	49.3	35.3	32.9	45	30.2
100	47.1	33.5	31.2	43.1	29
110	45	32	29.9	41.3	28.1
120	43.2	30.8	28.8	39.7	27.3
130	41.5	29.7	27.9	38.2	26.5

Time (mins)	POI 1	POI 2	POI 3	POI 4	POI 5
140	39.8	28.7	27.1	36.9	25.9
150	38.5	28.1	26.5	35.8	25.4
160	37.2	27.5	26.1	34.7	25.1
170	36	26.9	25.5	33.8	24.7
180	34.8	26.4	25.1	32.8	24.4
190	33.9	26	24.8	32	24
200	33	25.6	24.4	31.2	23.8
210	32.2	25.3	24.2	30.5	23.6
220	31.4	25	24	30	23.4
230	30.7	24.8	23.9	29.3	23.3
240	30.1	24.5	23.7	28.8	23.3
250	29.5	24.3	23.6	28.4	23.2
260	29	24.2	23.4	27.9	23
270	28.5	24.1	23.3	27.5	22.9
280	28	23.9	23.3	27.2	22.8
290	27.7	23.8	23.2	26.9	22.8
300	27.2	23.7	23.2	26.5	22.8
310	26.8	23.5	23	26.2	22.6
320	26.5	23.5	23	25.9	22.6
330	26.2	23.4	22.9	25.7	22.5
340	25.9	23.3	22.8	25.5	22.6
350	25.7	23.2	22.8	25.2	22.4
360	25.3	23.1	22.8	25	22.4
370	25.2	23	22.7	24.8	22.5
380	25	23	22.7	24.7	22.3
390	24.8	23	22.6	24.5	22.2
400	24.6	22.9	22.6	24.4	22.3
410	24.4	22.9	22.6	24.3	22.3
420	24.2	22.8	22.5	24.1	22.2
430	24.2	22.8	22.6	24	22.2

*Lab Survey 2: Samples MD-CH06-03 and MD-CH-P23-01*

**Table C11. Sample surface temperatures (in degrees Celsius) of POIs in Lab Survey 2, samples MD-CH06-03 and MD-CH-P23-01.**

Time (mins)	POI 1	POI 2	POI 3	POI 4	POI 5
0	76.2	75.3	74.6	76	76.4
10	70.2	65.8	63.3	72.8	67.2
20	63.1	54.7	52.1	65.7	56
30	57.2	46.9	44.2	59.1	47.7

Time (mins)	POI 1	POI 2	POI 3	POI 4	POI 5
40	52.2	41.4	38.6	53.3	41.6
50	47.9	37.4	34.8	48.5	37.3
60	47.9	37.3	34.7	48.5	37.3
70	41.1	32	30	41.1	31.8
80	38.5	30.2	28.5	38.4	29.9
90	36.3	28.9	27.4	36	28.6
100	34.4	27.8	26.5	34.2	27.6
110	32.9	27	26	32.7	26.9
120	31.6	26.3	25.5	31.3	26.2
130	30.4	25.9	25.1	30.2	25.7
140	29.5	25.4	24.7	29.3	25.3
150	28.7	25.1	24.6	28.5	25
160	27.9	24.8	24.3	27.8	24.7
170	27.4	24.6	24.3	27.2	24.6
180	26.9	24.5	24.1	26.7	24.4
190	26.4	24.2	24.1	26.3	24.3
200	26.2	24.3	24	26	24.3
210	25.8	24.1	23.9	25.7	24.1
220	25.5	24	23.8	25.4	24.1
230	25.3	24	23.8	25.2	24
240	25.2	24	23.8	25.1	24
250	25	24	23.8	24.9	24
260	24.9	24	23.9	24.8	24
270	24.7	23.9	23.8	24.7	24
280	24.7	23.9	23.8	24.6	23.9
290	24.5	23.9	23.8	24.4	24.1
300	24.4	23.9	23.8	24.4	24
310	24.4	23.9	23.7	24.3	24
320	24.3	23.9	23.8	24.3	24
330	24.3	24	23.9	24.3	24
340	24.3	23.9	23.8	24.2	24
350	24.2	23.9	23.7	24.2	24
360	24.2	23.9	23.8	24.1	23.9
370	24.2	24	23.8	24.1	23.9
380	24.2	24	23.8	24	23.9
390	24	23.9	23.7	24	23.9
400	24	23.9	23.7	23.9	23.9
410	23.9	23.8	23.7	23.9	23.9
420	23.9	23.7	23.6	23.9	23.8
430	23.9	23.7	23.6	23.9	23.7

*Lab Survey 3: Samples MD-CH-P67-01 and MD-CH-P67-02*

**Table C12. Sample surface temperatures (in degrees Celsius) of POIs in Lab Survey 3, samples MD-CH-P67-01 and MD-CH-P67-02.**

Time (mins)	POI 1	POI 2	POI 3	POI 4	POI 5
0	76.3	74.4	75.3	75.2	75.5
10	71.8	67.2	70.3	68.6	65
20	65.2	57.5	59.8	62.2	55.9
30	59.2	50.3	51.2	56.2	48.6
40	54	44.9	44.8	51.2	43
50	49.8	40.7	39.8	47	38.6
60	46	37.5	36.1	43.4	35.4
70	42.9	35	33.4	40.6	32.9
80	40.2	32.9	31.3	38.1	30.9
90	37.8	31.2	29.6	36	29.4
100	35.8	29.9	28.4	34.2	28.1
110	34	28.8	27.4	32.7	27.1
120	32.5	27.8	26.5	31.3	26.2
130	31.3	27	26	30.2	25.6
140	30.2	26.5	25.4	29.3	25
150	29.1	25.9	24.8	28.4	24.7
160	28.3	25.4	24.5	27.6	24.3
170	27.6	25.1	24.2	27	24
180	26.9	24.9	24	26.5	23.9
190	26.4	24.5	23.7	25.9	23.6
200	26	24.3	23.6	25.5	23.5
210	25.5	24.1	23.5	25.2	23.3
220	25.2	24	23.4	24.9	23.2
230	24.9	23.9	23.3	24.6	23.2
240	24.6	23.8	23.2	24.3	23
250	24.3	23.7	23.1	24.1	23
260	24.1	23.6	23	24	22.9
270	24	23.6	23.1	23.8	22.9
280	23.8	23.5	23	23.7	22.9
290	23.7	23.5	23	23.6	22.9
300	23.5	23.4	22.9	23.4	22.7
310	23.4	23.3	23	23.3	22.7
320	23.3	23.3	22.9	23.2	22.8
330	23.2	23.3	22.9	23.1	22.7
340	23.1	23.2	22.8	22.9	22.6
350	23	23.2	22.7	22.9	22.6

<b>Time (mins)</b>	<b>POI 1</b>	<b>POI 2</b>	<b>POI 3</b>	<b>POI 4</b>	<b>POI 5</b>
360	22.9	23	22.7	22.7	22.6