

# Predicting Ovarian Cancer Survival Times: Feature Selection and Performance of Parametric, Semi-Parametric, and Random Survival Forest Methods: Supplementary Plots

Vinnie Liu

April 23, 2019

## 1 Performance of Additional Methods Across Inclusion Thresholds

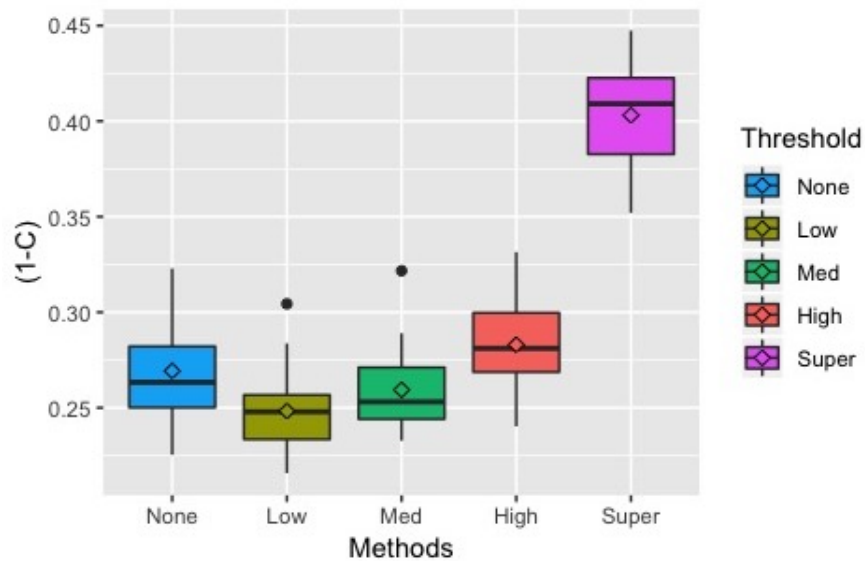


Figure S1: Prediction error ( $1 - C$ ) of the Weibull model with backwards elimination by varying degree of strictness when selecting features

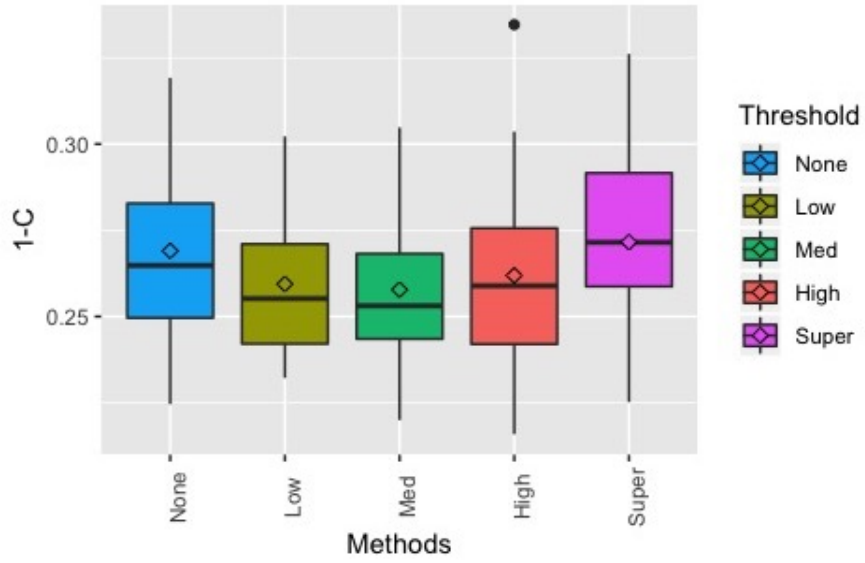


Figure S2: Prediction error ( $1 - C$ ) of the Cox model with group LASSO by varying degrees of strictness when selecting features

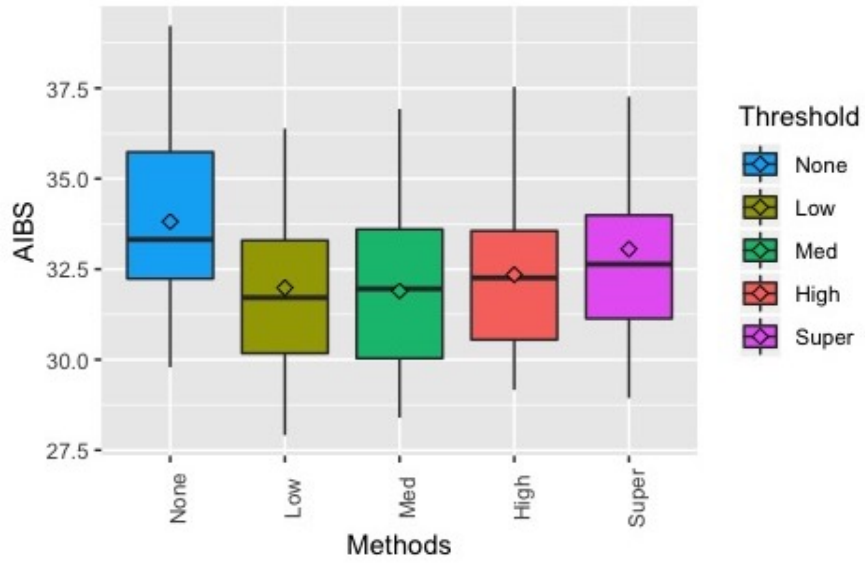


Figure S3: Prediction error (AIBS) of the Cox model with group LASSO by varying degrees of strictness when selecting features

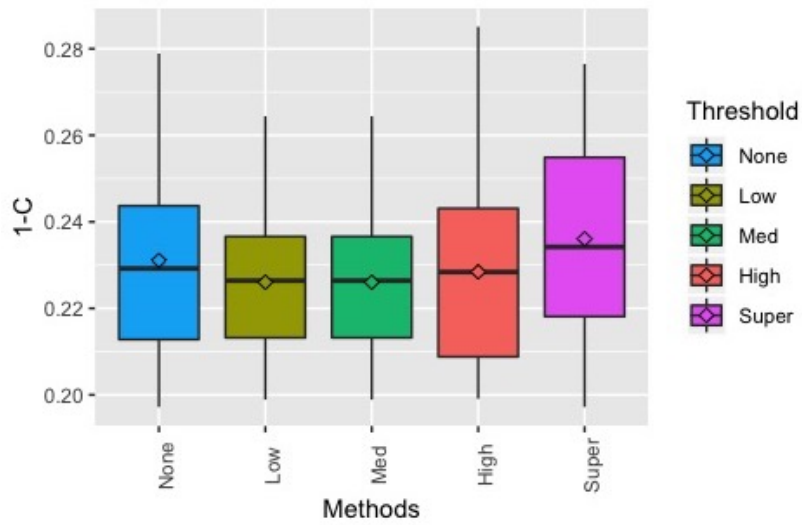


Figure S4: Prediction error ( $1 - C$ ) of the RSF with the Pang algorithm by varying degrees of strictness when selecting features

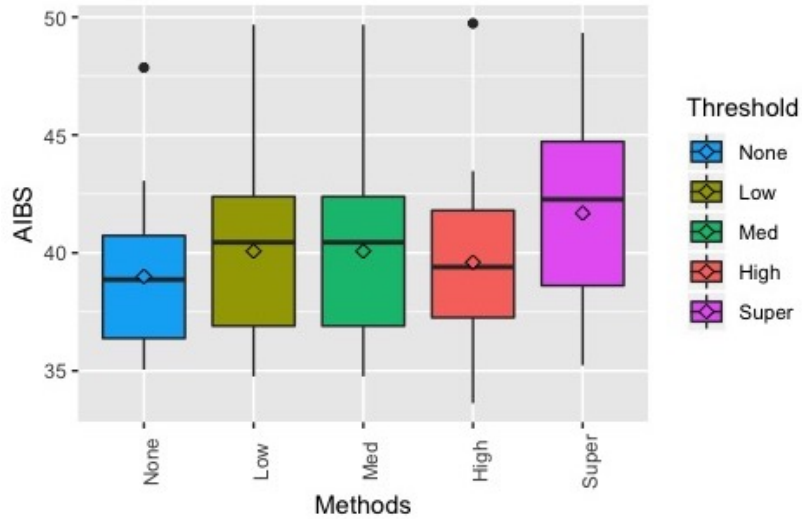


Figure S5: Prediction error (AIBS) of the RSF with the Pang algorithm by varying degrees of strictness when selecting feature

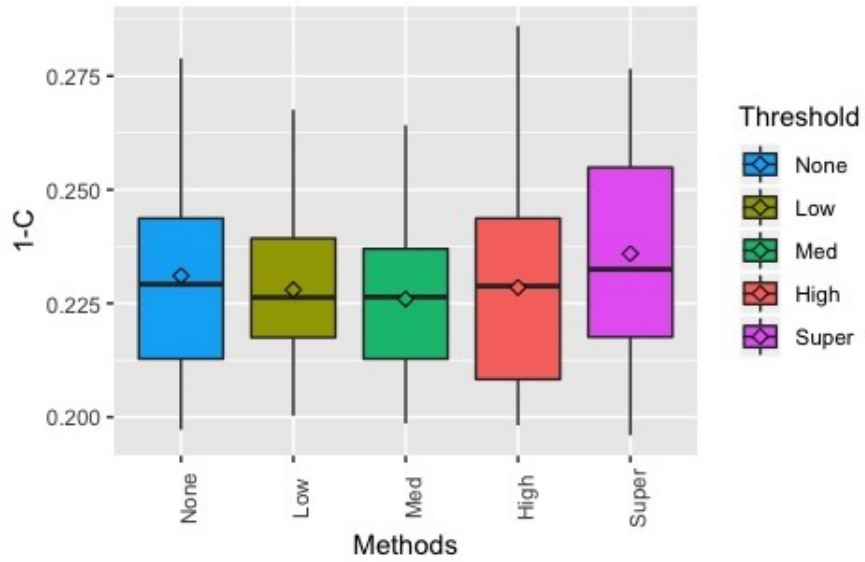


Figure S6: Prediction error ( $1 - C$ ) of the RSF with the Pang-R algorithm by varying degrees of strictness when selecting feature

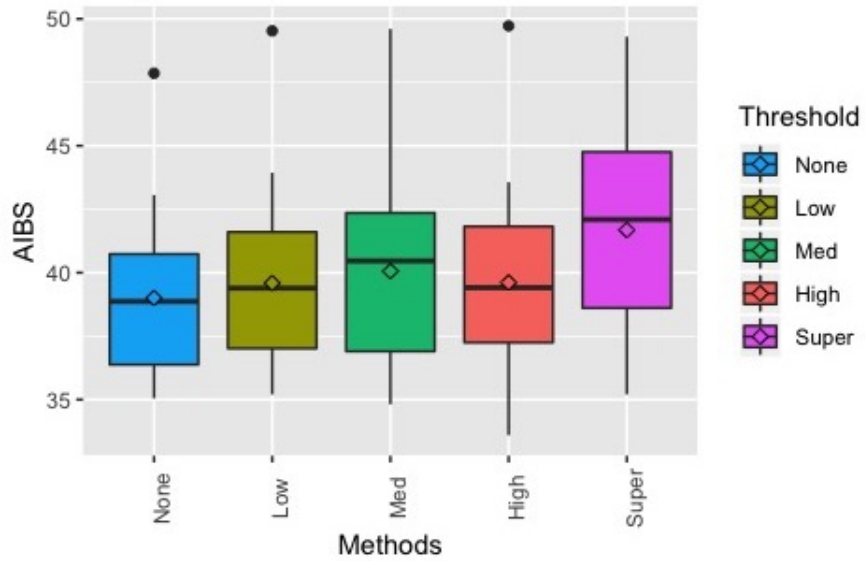


Figure S7: Prediction error (AIBS) of the RSF with the Pang-R algorithm by varying degrees of strictness when selecting feature

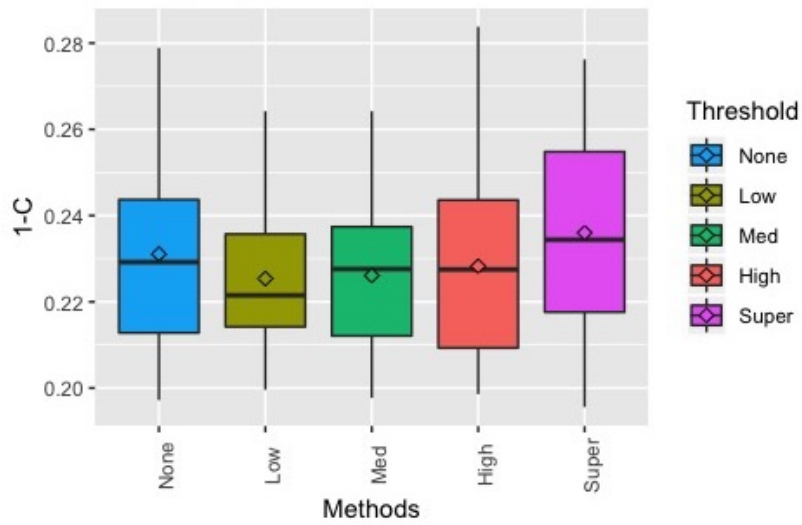


Figure S8: Prediction error ( $1 - C$ ) of the RSF with the Pang-K algorithm by varying degrees of strictness when selecting feature

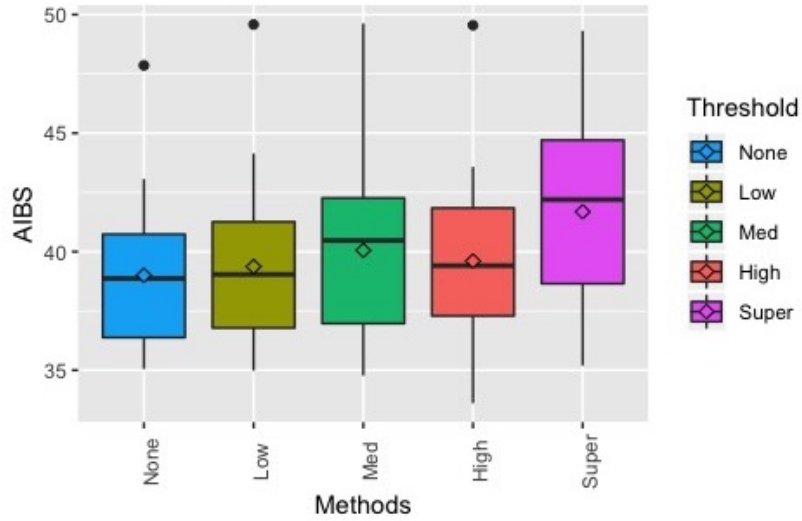


Figure S9: Prediction error (AIBS) of the RSF with the Pang-K algorithm by varying degrees of strictness when selecting feature

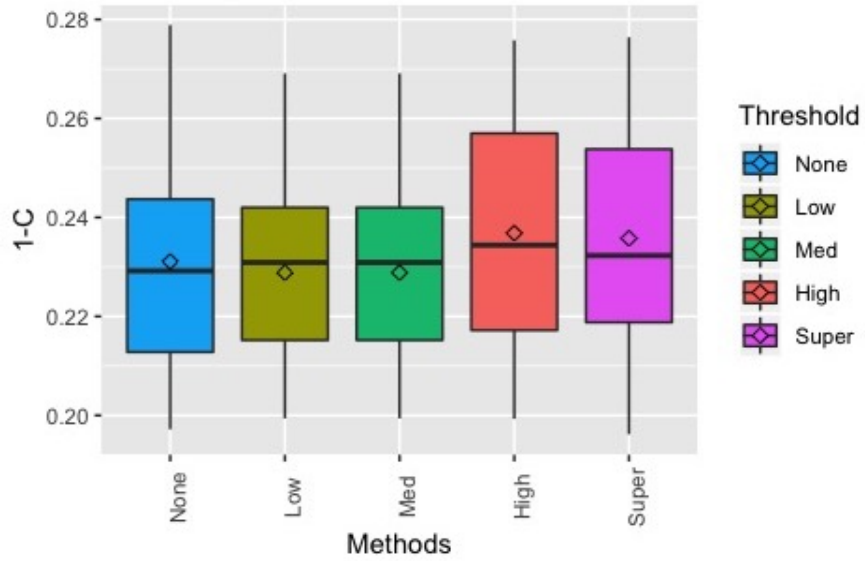


Figure S10: Prediction error ( $1 - C$ ) of the RSF with the Pang-K-R algorithm by varying degrees of strictness when selecting feature

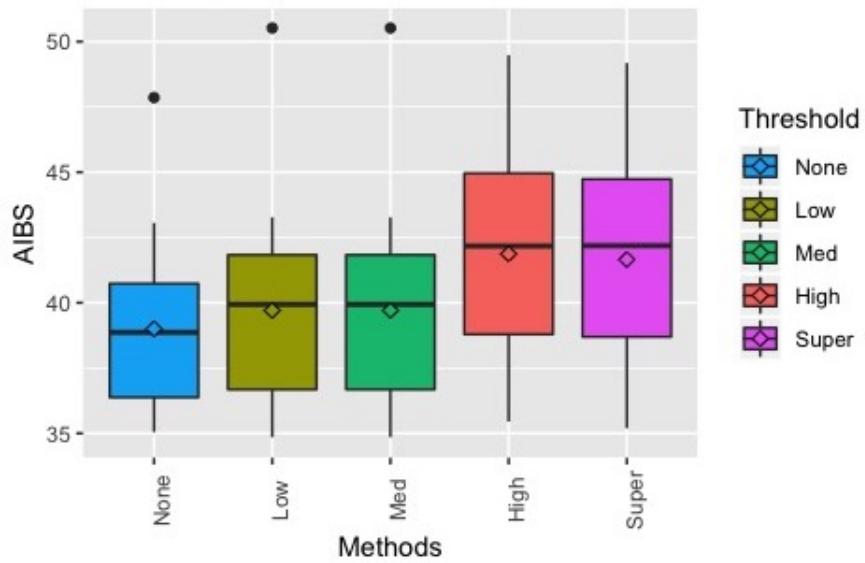


Figure S11: Prediction error (AIBS) of the RSF with the Pang-K-R algorithm by varying degrees of strictness when selecting feature

## 2 Mean Prediction Errors

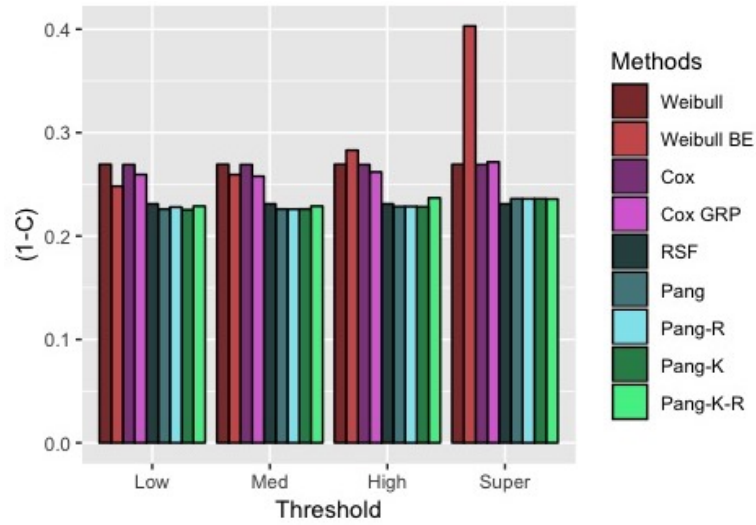


Figure S12: Mean prediction error  $(1 - C)$  of all methods by varying degrees of strictness

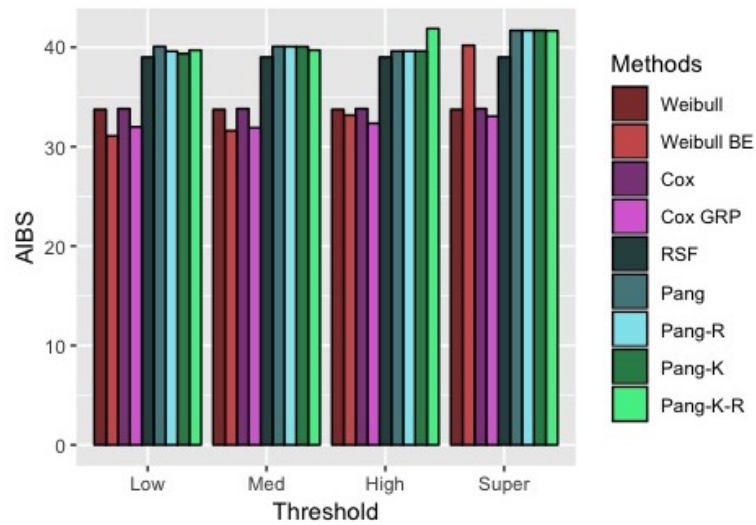


Figure S13: Mean prediction error (AIBS) of all methods by varying degrees of strictness

### 3 Comparison of Iterative RSF Feature Selection

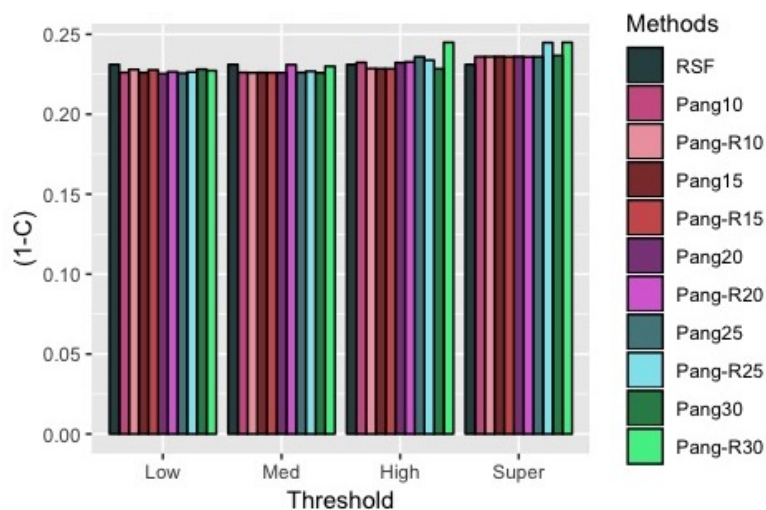


Figure S14: Comparison of prediction error  $(1 - C)$  of the RSF with Pang vs. Pang-R algorithms by varying degrees of strictness when selecting features

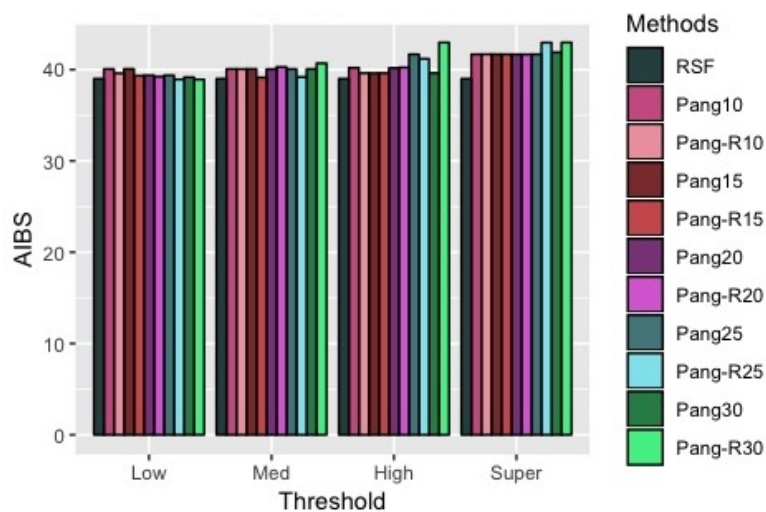


Figure S15: Comparison of prediction error (AIBS) of the RSF with Pang vs. Pang-R algorithms by varying degrees of strictness when selecting features



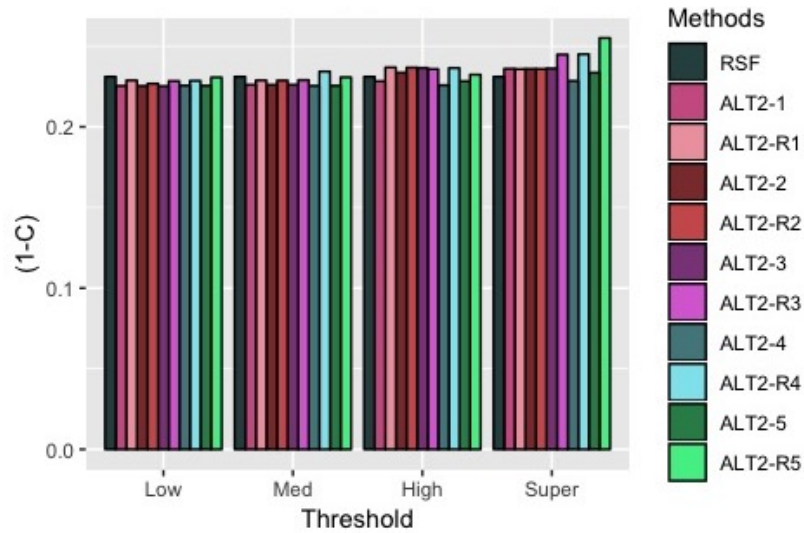


Figure S16: Comparison of prediction error  $(1 - C)$  of the RSF with Pang-K vs. Pang-K-R algorithms by varying degrees of strictness when selecting features

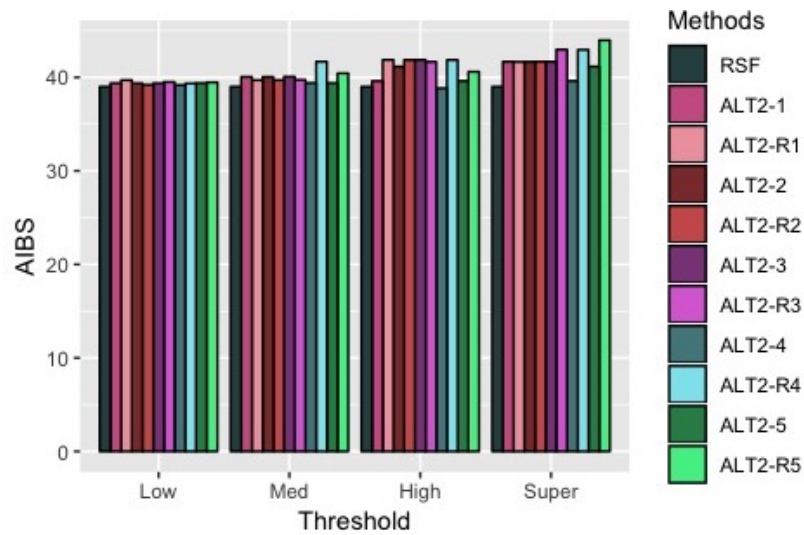


Figure S17: Comparison of prediction error (AIBS) of the RSF with Pang vs. Pang-R algorithms by varying degrees of strictness when selecting features